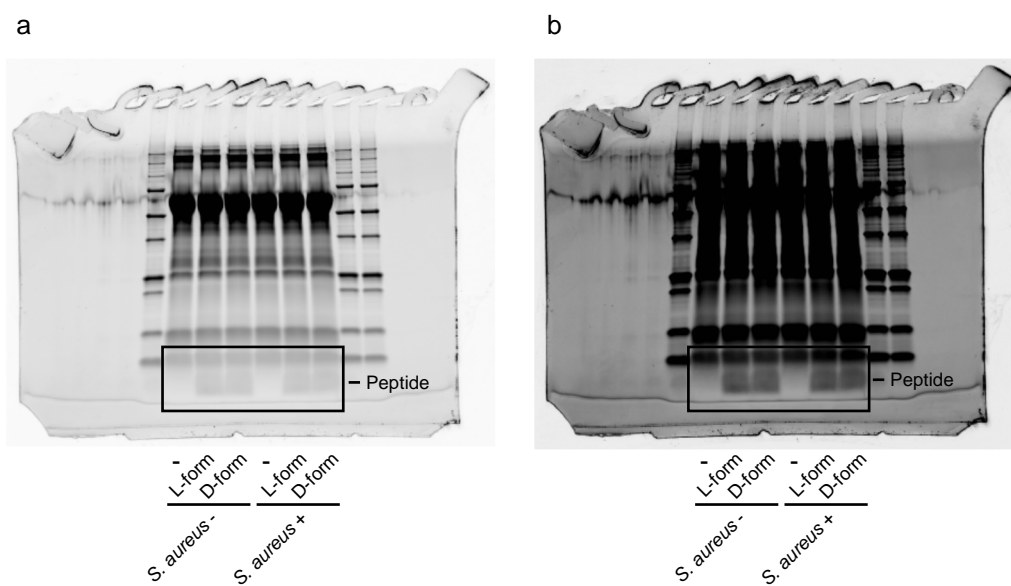


# D-form KLKLLLLLKLK-NH2 peptide exerts higher antimicrobial properties than its L-form counterpart via an association with bacterial cell wall components

Takayuki Manabe and Kiyoshi Kawasaki<sup>#</sup>

## Supplementary information



**Supplementary Figure 1. Multiple contrast images of full-length gel for Figure 1g.**

Figure 1g was prepared from image b.