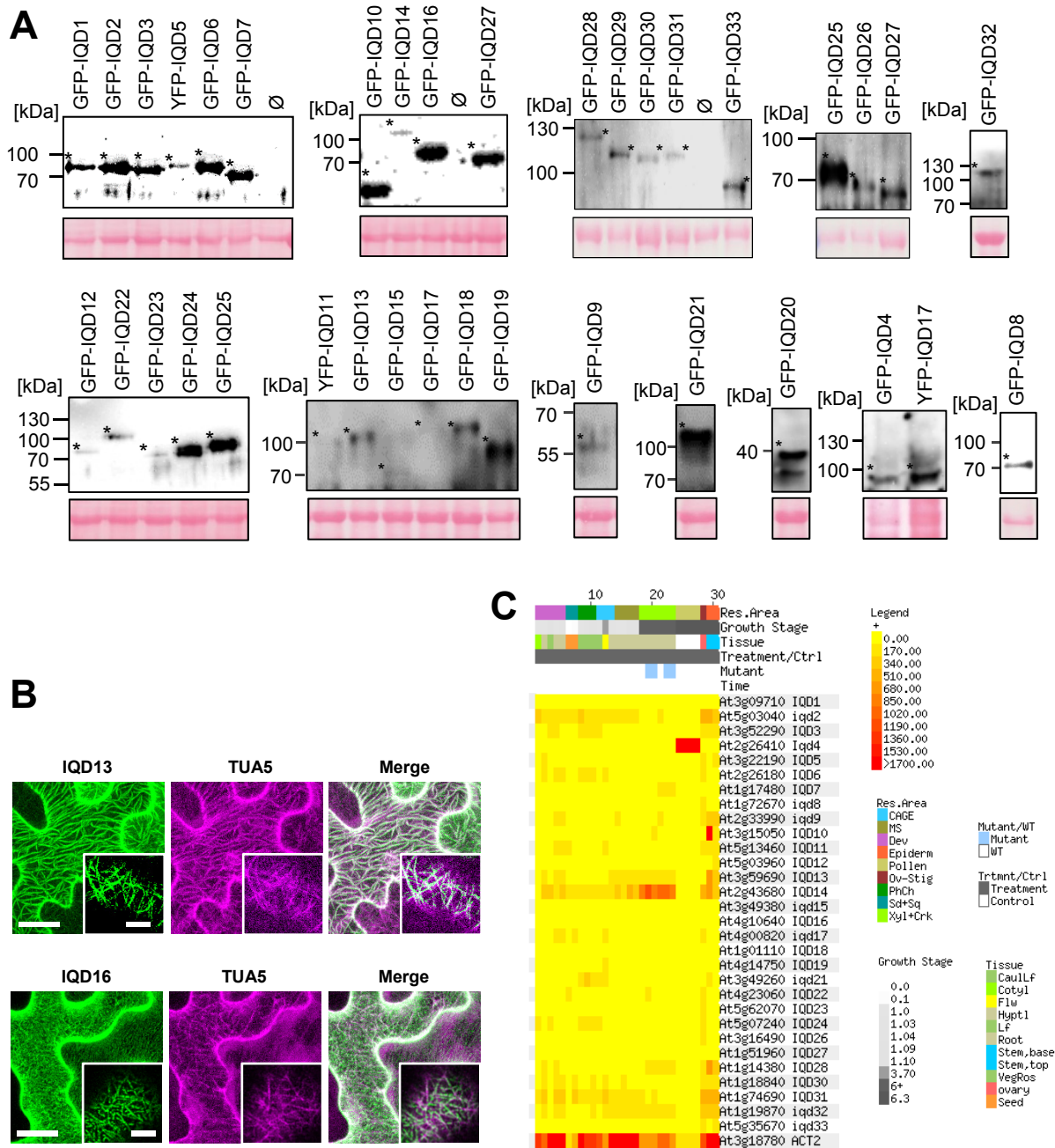


Figure S1 Bürstenbinder et al.



**Supplemental Figure 1. Expression Analysis and Subcellular Localization of *A. thaliana* IQD Genes.**

A, Expression of full-length GFP-IQD fusion proteins was confirmed by immunoblot analysis using an anti-GFP antibody, as shown for a few examples. For a list of calculated molecular masses of the GFP-IQD fusions see Supplemental Table S1. B, Co-expression of RFP-TUA5 with GFP-IQD13 (left) and GFP-IQD16 (right) in *N. benthamiana* epidermis cells. Note the differences in RFP-TUA5 labeled MT networks. Micrographs of cells are projections of Z-stacks; insets are single-layer images. Bars, 20  $\mu$ m and 5  $\mu$ m (insets). C, IQD gene expression was analyzed in various tissues and developmental stages using the AtGenExpress\_Plus\_Extended Tissue Series dataset provided by the BAR expression browser in comparison to *ACTIN2*. Color code in the heat map represents relative expression intensities. Analyzed tissues and growth stages, as listed in the legend are highlighted on the right of the heat map. Expression information is not available for *IQD20*, *IQD25*, and *IQD29*.