

**Comparative evaluation of leukocyte- and platelet-rich plasma and
pure platelet-rich plasma for cartilage regeneration**

Zhengliang Xu^{1*}, Wenjing Yin^{1*}, Yuelei Zhang¹, Xin Qi¹, Yixuan Chen¹, Xuetao Xie¹,

Changqing Zhang¹

1. Department of Orthopaedic Surgery, Shanghai Jiao Tong University Affiliated
Sixth People's Hospital, Shanghai, China.

Zhengliang Xu and Wenjing Yin are co-first authors of this article.

Corresponding authors:

Changqing Zhang (e-mail: zhangcq@sjtu.edu.cn), Xuetao Xie (e-mail:
xiexuetao1982@163.com).

Address: Department of Orthopaedic Surgery, Shanghai Jiao Tong University
Affiliated Sixth People's Hospital, 600 Yishan Road, Shanghai 200233, People's
Republic of China.

Telephone: +86-21-64369181

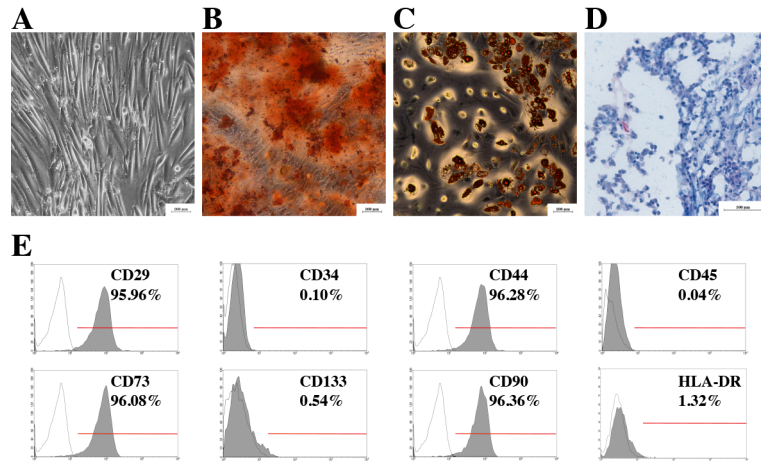


Figure S1. Identification of rBMSC. (A) microscopic appearance of rBMSC; (B) osteogenic differentiation of rBMSC was evaluated by alizarin red staining after osteogenic differentiation induction for 3 weeks; (C) adipogenic differentiation of rBMSC was evaluated by oil red O staining after adipogenic differentiation induction for 2 weeks; (D) chondrogenic differentiation of rBMSC was evaluated by alcian blue staining after chondrogenic differentiation induction for 4 weeks; (E) surface marker identification was performed by flow cytometry.

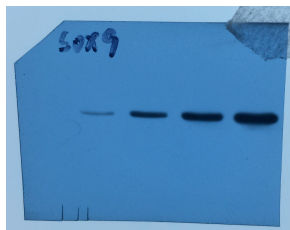


Figure 3B-Sox9

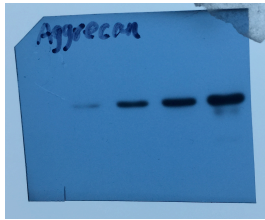


Figure 3B-Aggrecon

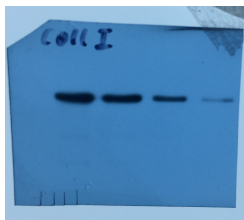


Figure 3B-Col I



Figure 3B-Col II

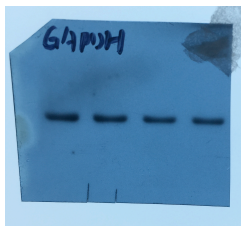


Figure 3B-GAPDH

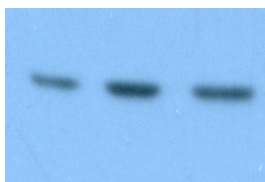


Figure 4B-NF- κ B p65

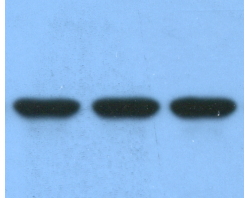


Figure 4B GAPDH