

Supplementary information, Figure S5

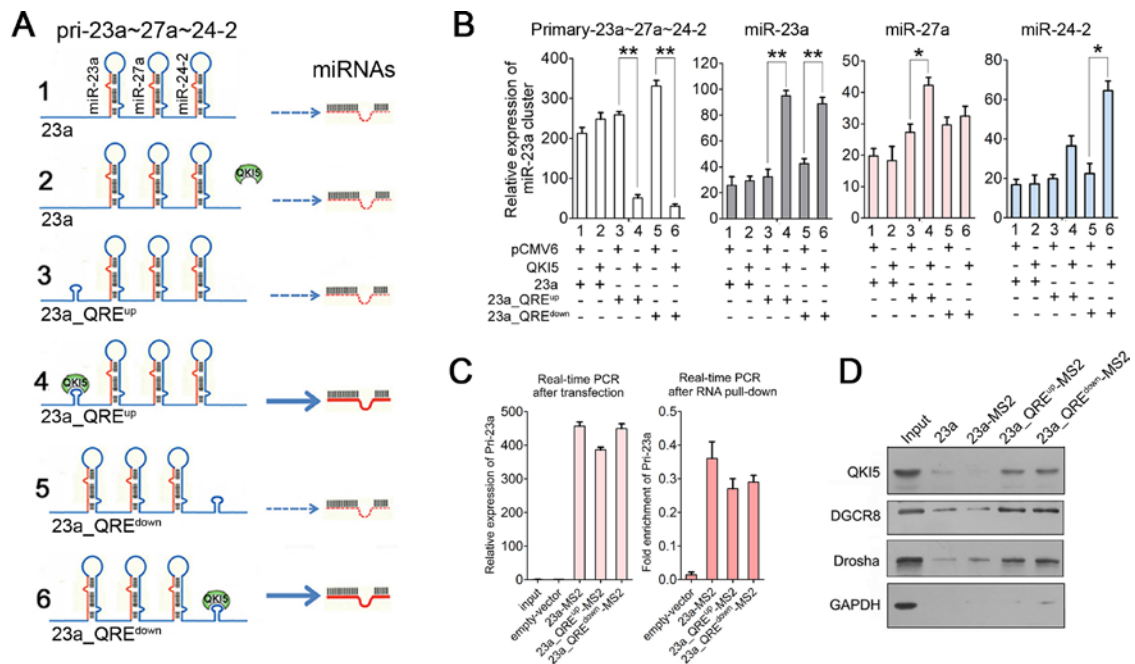


Figure S5 QKI5 acts on the processing of QRE-introduced pri-23a~27a~24-2 transcripts. **(A)** A schematic representation of co-transfection combinations with pCMV6-QKI5 and different pri-23a~27a~24-2 constructs: wild-type pri-23a~27a~24-2 (23a), QRE-introduced pri-23a~27a~24-2 (23a_QRE^{up} and 23a_QRE^{down}). **(B)** Q-PCR of pri-23a~27a~24-2, miR-23a, miR-27a and miR-24-2 levels upon co-transfection of 293T cells with different combinations as shown in **A**. **(C)** The left panel: q-PCR analysis of pri-23a~27a~24-2 in 293T cells transfected with either MS2-tagged wild-type (23a) or QRE-introduced pri-23a~27a~24-2. The right panel: q-PCR analysis of precipitated pri-23a~27a~24-2 transcripts in RNA pull-down assays. **(D)** Immunoblot of endogenous QKI5, DGCR8 and Drosha associated with different pri-23a~27a~24-2 transcripts in RNA pull-down assays.