

Supplementary information, Figure S7

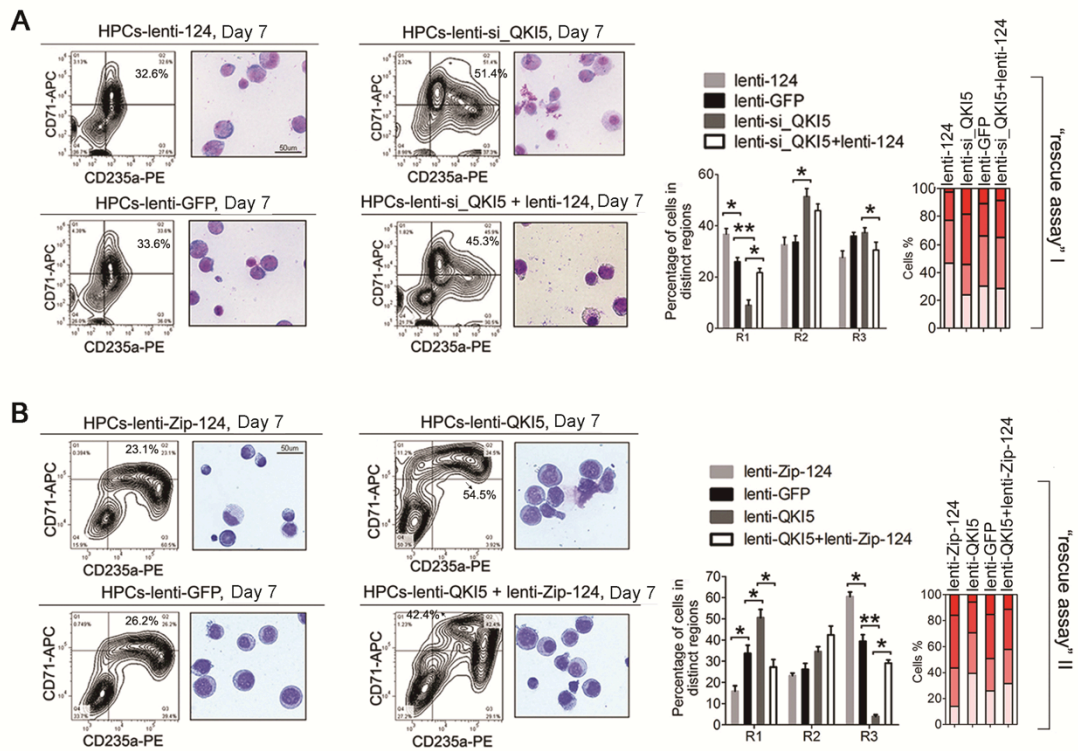


Figure S7 Functional “rescue assay” in HPCs. **(A)** The left panel: FACS and Giemsa analysis of HPCs transduced with lenti-si_QKI5 or lenti-GFP control for 24 h. These cells were subsequently treated for another 24 h with lenti-124 or lenti-GFP and cultured for 7 days. Quantitation of the FACS and Giemsa staining results were shown in the right. **(B)** The lower panel: FACS and Giemsa analysis of HPCs transduced with lenti-QKI5 or lenti-GFP control for 24 h. These cells were subsequently treated for another 24 h with lenti-Zip-124 or lenti-GFP and cultured for 7 days. Quantitation of the FACS and Giemsa staining results were shown in the right. Error bars reflect SEM from three biological replicates if not stated otherwise. Significance was determined by *t*-test with $*P < 0.05$; $**P < 0.01$.