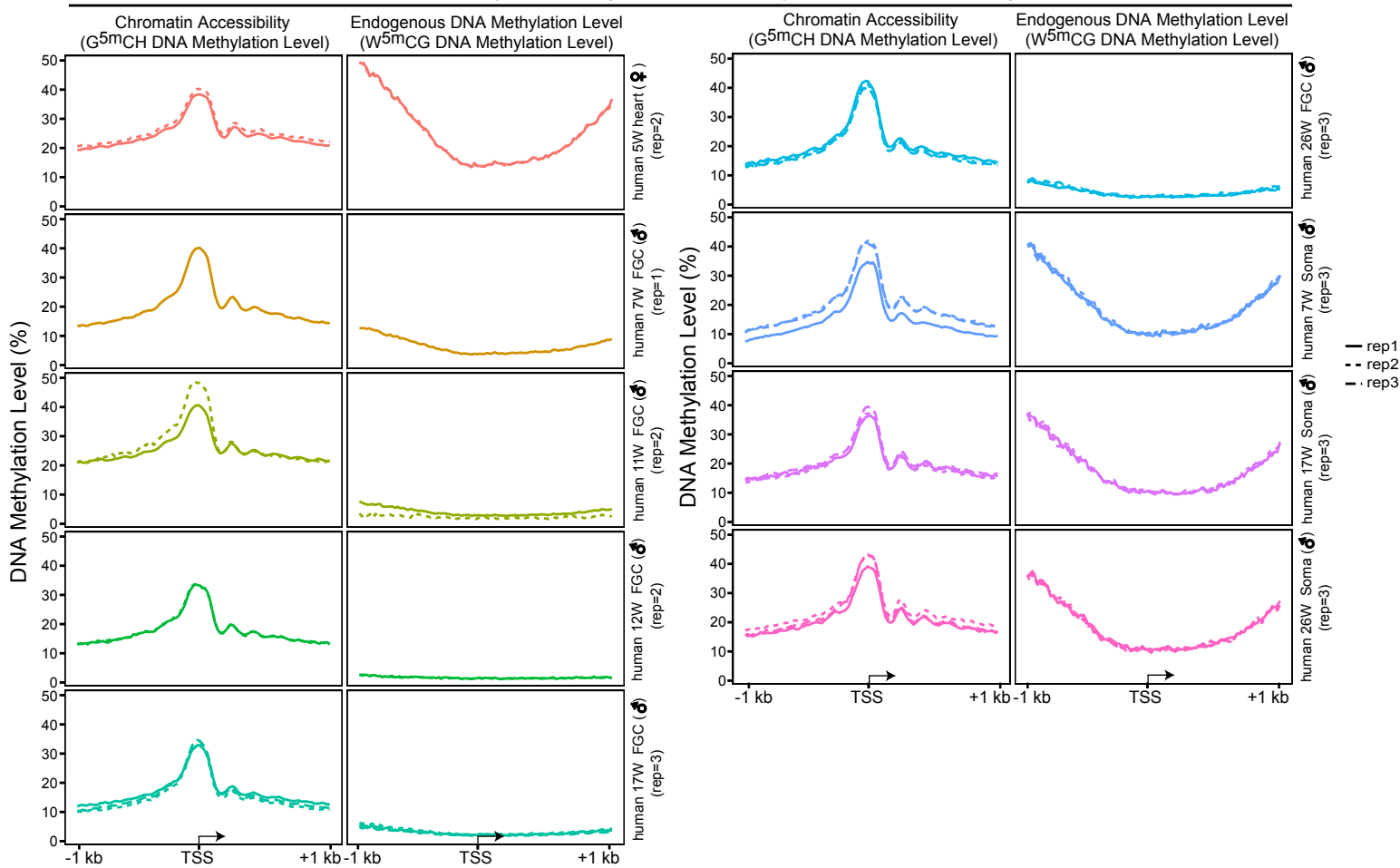
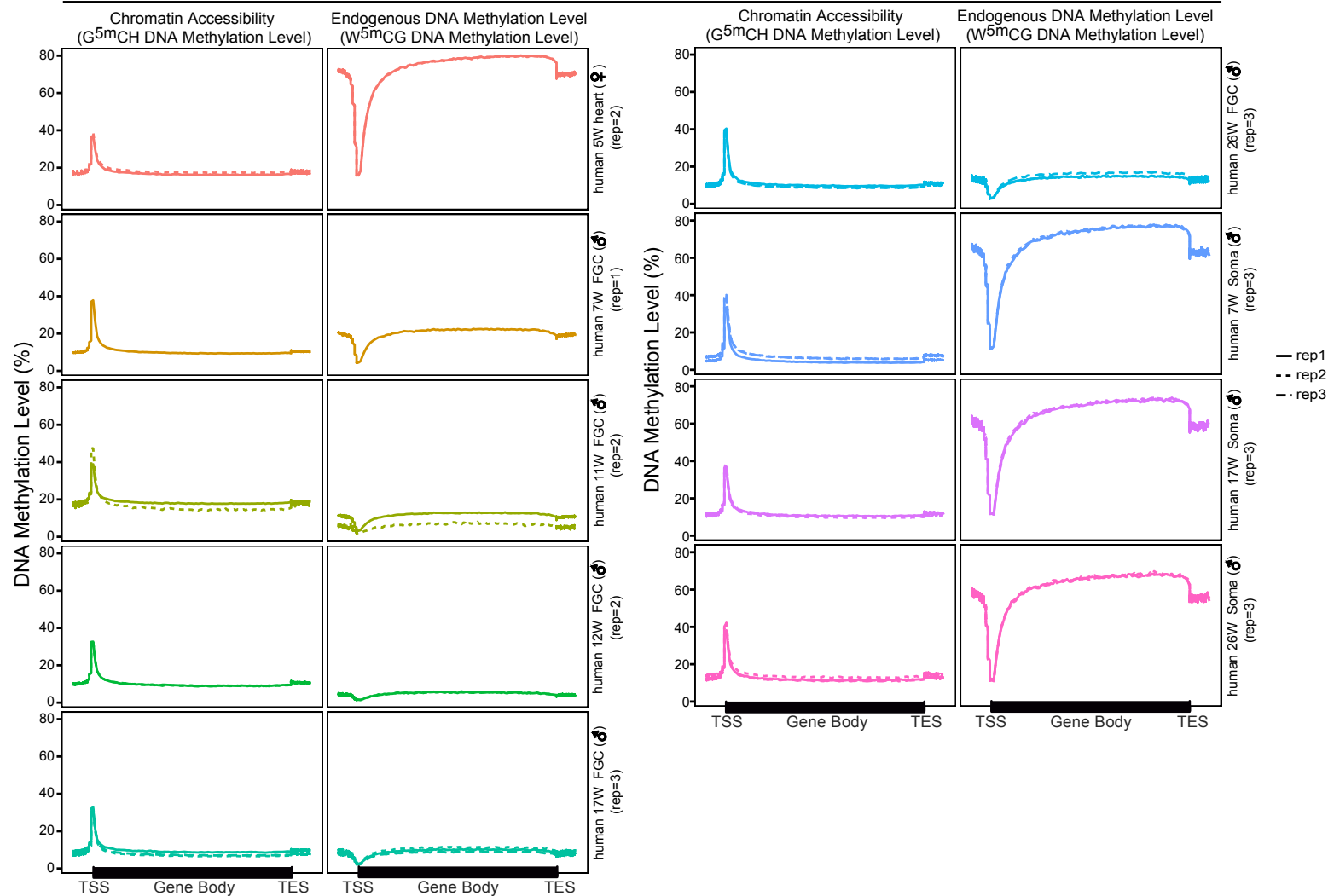


**Figure S2****A****Chromatin Accessibility and Endogenous DNA Methylation on Promoter Regions (Human)****B****Chromatin Accessibility and DNA Methylation on Genebody Regions (Human)**

**Figure S2 Reproducibility of the NOMe-seq data of human germline.**

(A) The reproducible patterns of chromatin accessibility and endogenous DNA methylation on promoter regions across replicates. (B) The reproducible patterns of chromatin accessibility and endogenous DNA methylation on gene body regions across replicates.