

Supplementary information, Figure S6

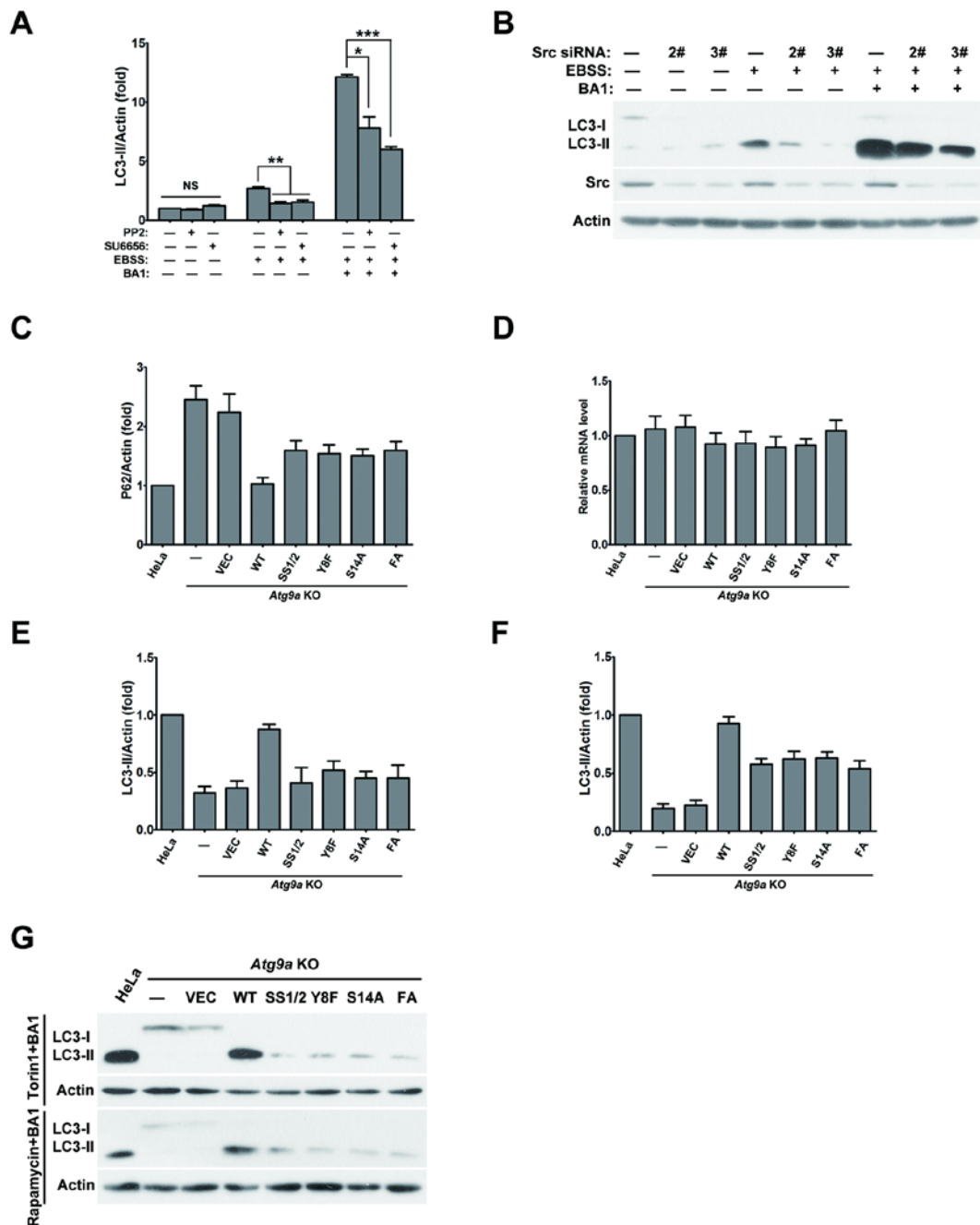


Figure S6 Phosphorylation of mATG9 is essential for basal and starvation-induced autophagy. **(A)** Quantitative analysis of the LC3-II protein levels in **Figure 7C** by Image J (normalized to actin). **(B)** HeLa cells were transfected with scrambled or Src targeted siRNA for 72 h, and then treated with or without EBSS starvation for 2 h in the presence or absence of the lysosome inhibitor BA1 (Bafilomycin A1, 20 nM). **(C)**

Quantitative analysis of the P62 protein levels in **Figure 7F** by Image J (normalized to actin). **(D)** The mRNA levels of P62 in the indicated cells were analyzed by RT-qPCR. **(E)** Quantitative analysis of the LC3-II protein levels in **Figure 7C** upper panel by Image J (normalized to actin). **(F)** Quantitative analysis of the LC3-II protein levels in **Figure 7C** lower panel by Image J (normalized to actin). **(G)** *Atg9a* KO HeLa cells stable reconstituted with wild-type mATG9 or the indicated mutants were treated with mTORC1 inhibitors Torin1 (1 μ M) or Rapamycin (1 μ M) for 2 h in the presence of the lysosome inhibitor BA1 (20 nM).