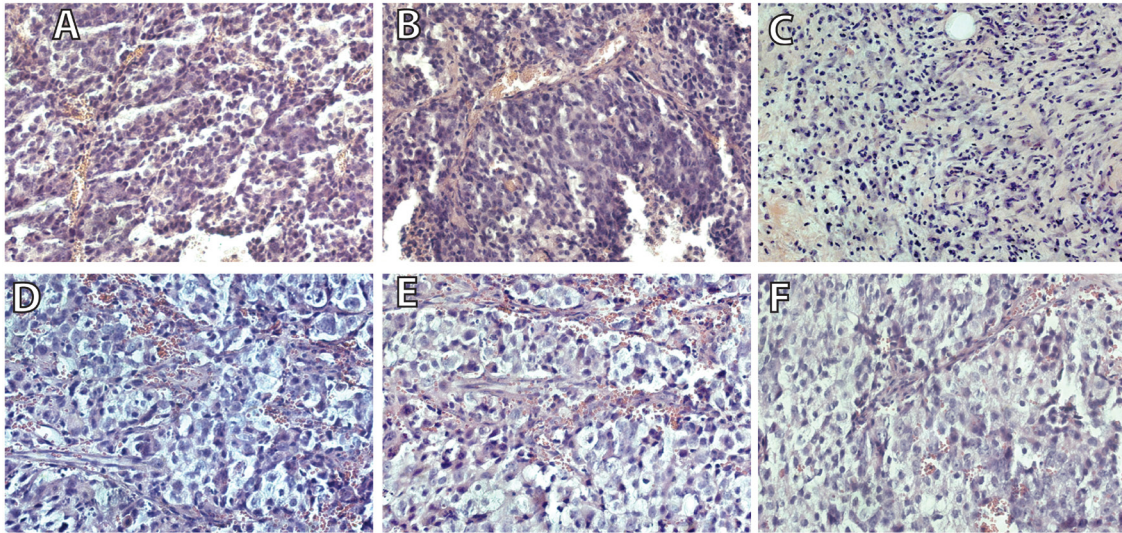


Intra-tumoral delivery of functional ID4 protein via PCL/maltodextrin nano-particle inhibits prostate cancer growth

SUPPLEMENTARY FIGURE



Supplementary Figure S1: Histological analysis of tumors following excision. The 5um sections were stained with H&E. **A.** L(-)ID4, **B.** L(-)ID4+NC, **C.** L(-)ID4+ID4NC, **D.** L(-)ID4+ DTX, **E.** L(-)ID4+NC+ DTX and **F.** L(-)ID4+ID4NC+ DTX. Representative images are shown.