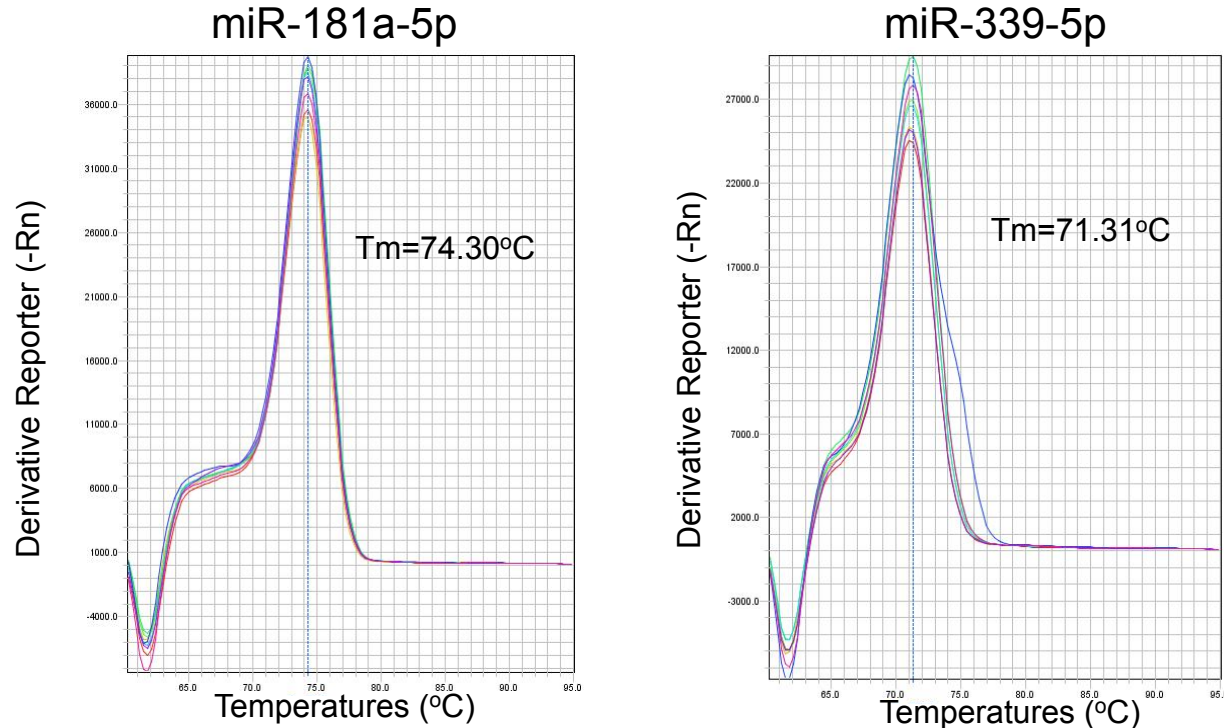


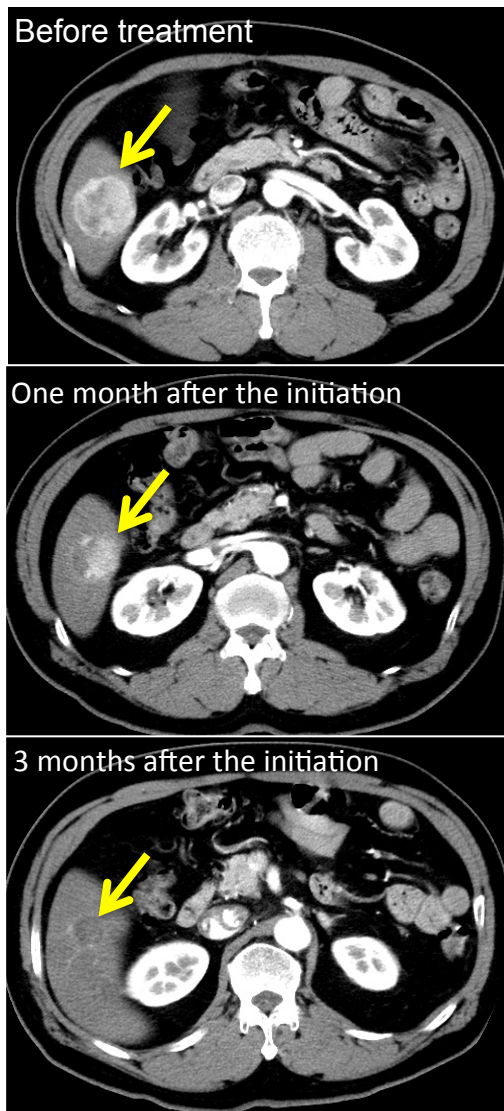
Melt Curve



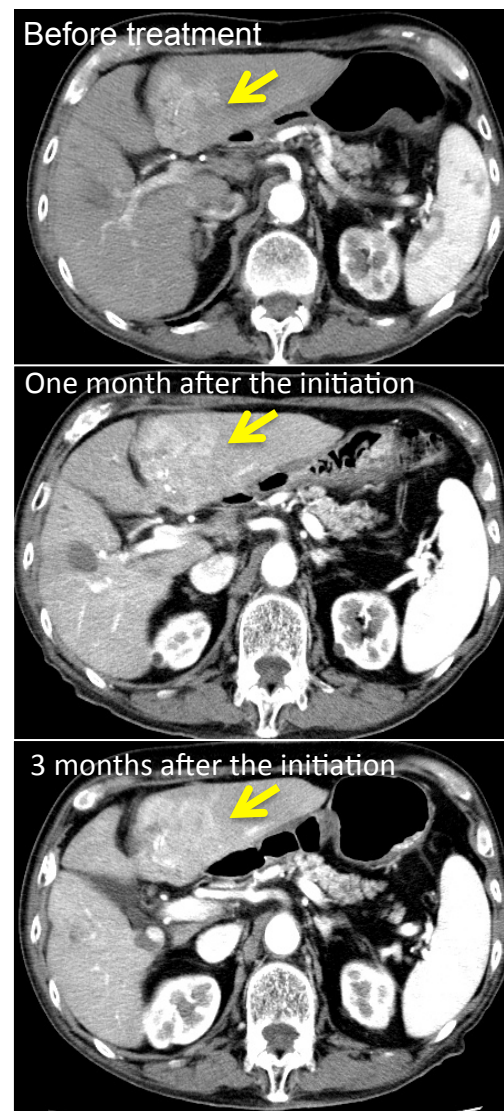
Representatives of melt curves for miR-181a-5p and miR-339-5p. The curves show distinct single peaks corresponding to the melting temperatures of 74.30 °C and 71.31 °C for PCR products of miR-181a-5p and miR-339-5p, respectively. Rn is the fluorescence of the reporter dye divided by the fluorescence of a passive reference dye.

Supplementary Figure 2

Patients classified as partial response

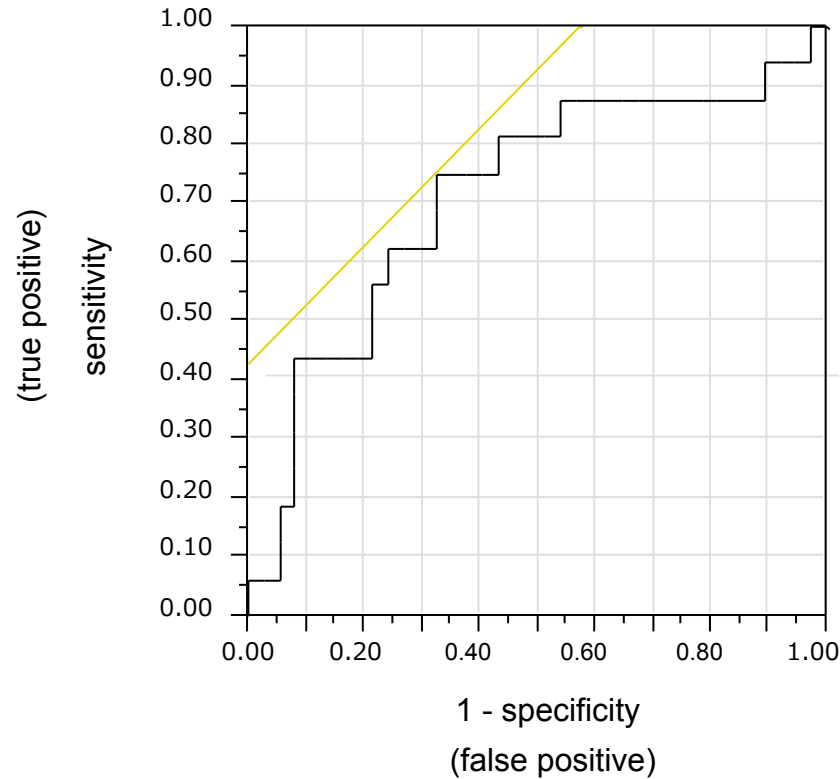


Patients classified as progressive disease



Representative CT images of the cases with partial response and progressive disease

Supplementary Figure 3



Receiver operating characteristic curve for the serum miR-181a-5p level before treatment that best reflects the disease control at 3 months after the initiation of sorafenib.