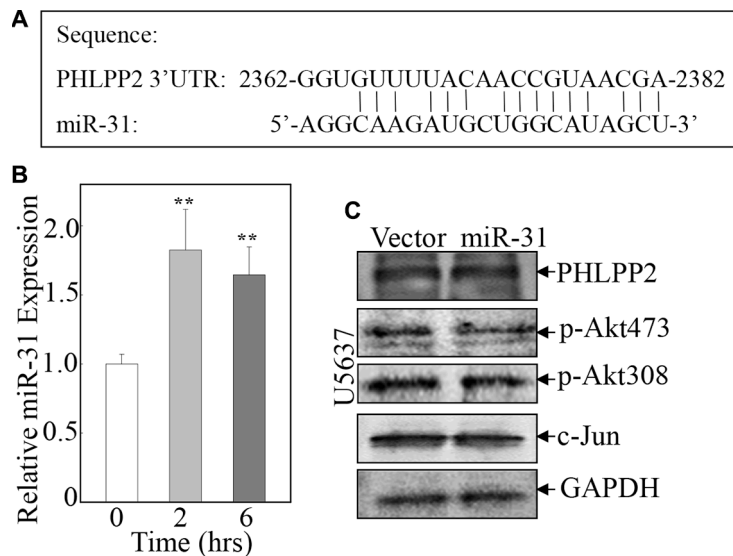


Cheliensisin A (Chel A) induces apoptosis in human bladder cancer cells by promoting PHLPP2 protein degradation

Supplementary Materials



Supplementary Figure S1: (A) shows a sequence complementarity between PHLPP2 and miR-31. (B) After being exposed to 4 μ M Chel A for the indicated time points, U5637 cells were harvested for RNA isolation. QT-PCR was employed to examine the relative expression of miR-31. (C) Stable overexpression of miR-31 transfectants were established in the U5637 cells. After synchronization, U5637 (vector) and U5637 (miR-31) were harvested for Western Blotting with the indicated antibodies.