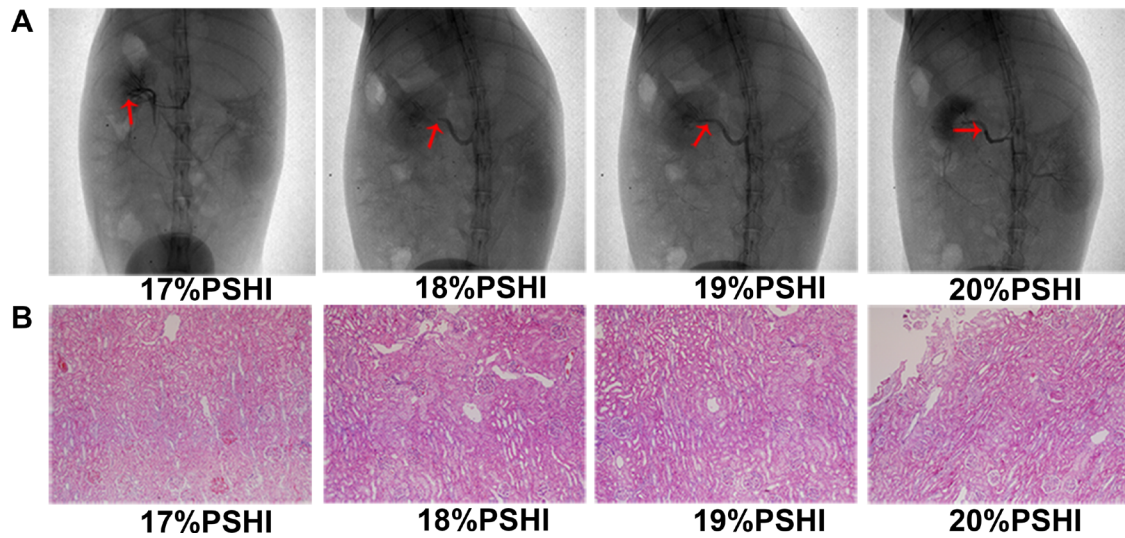


## Thermo-sensitive composite hydrogels based on poloxamer 407 and alginate and their therapeutic effect in embolization in rabbit VX2 liver tumors

### SUPPLEMENTARY FIGURE



**Supplementary Figure S1: Different P407 concentrations of PSHI in the renal arteries for embolization. A.** DSA images of different formulations used for renal embolization. **B.** The histopathological analyses of rabbit kidney tissues after embolization. Supporting Information. Brief statement in nonsentence format listing the contents of the material supplied as Supporting Information.