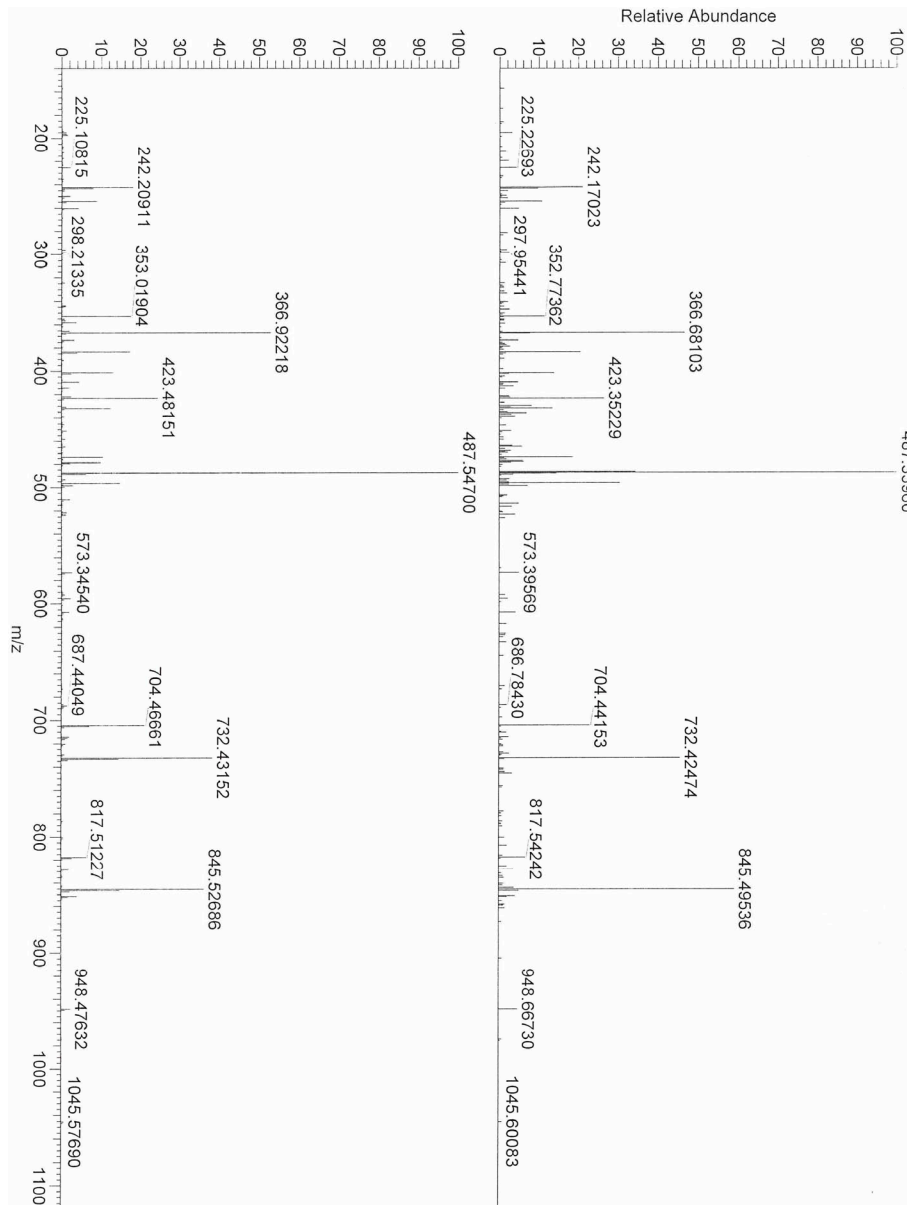
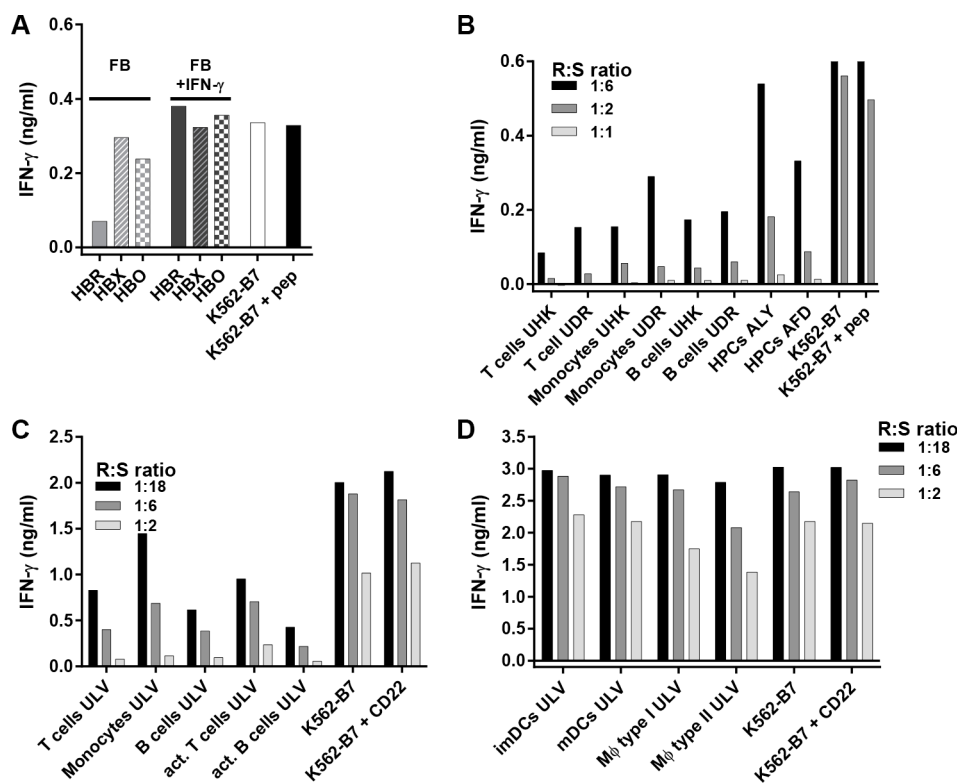


A CD22-reactive TCR from the T-cell allorepertoire for the treatment of acute lymphoblastic leukemia by TCR gene transfer

Supplementary Materials



Supplementary Figure S1: Matching tandem mass spectra of synthesized and eluted CD22-derived peptide RPFPPHIQL (CD22_{RPF}). Shown are tandem mass spectra of the eluted (top) and synthesized (bottom) peptide.



Supplementary Figure S2: Recognition of stimulator cells by control T-cell clone CTZ. Control T-cell clone CTZ recognizing a ubiquitously expressed antigen presented in HLA-B7 was used to test the stimulatory capacity of used cell samples. (A–C) The same stimulator cells as in Figure 3A–3C, respectively, were cocultured with clone CTZ. (D) The stimulatory capacity of cells used in Figure 4A was tested using clone CTZ.

Supplementary Table S1: HLA typing of B-LCL panel used in this study (Adapted from van Loenen *et al.* [25])

B-LCL	HLA class I			HLA class II		
	A	B	C	DR	DQ	DP
NGZ	11, 24	53, 61	2	1, 11	5, 7	1*0201, 1*0301
LMB	29	44, 51	14, 16	7, 8	2, 4	1*0401, 1*110101
MWX	1, 34	15, 35	4, 12	1, 15	5, 6	1*0601, 1*1301
ABV	3, 29	7, 44	7	7, 14	5, 2	1*0401, 1*1101
UKL*	1, 30	8, 13	6, 7	4, 17	2, 7	1*0401
AKB	1, 2	37, 39	6, 7	1, 10	5	2*0102, 1*0401
RBB*	2, 26	8, 27	1, 7	17, 52	2	1*0401
IZA	2, 24	8, 60	3, 7	13, 17	2, 6	1*0401, 1*1401
NGI	11, 24	8, 39	7	17, 8	2, 4	1*0101, 1*1401
AHT	24, 25	55, 62	3	8, 15	5, 6	1*0401
MHX	1, 0205	18, 50	6, 7	7, 9	2, 9	1*0201, 1*0301
CVV	11, 31	57, 62	3, 6	4, 7	7, 9	1*0201, 1*0401
UCE*	3, 11	7, 27	2, 7	11, 14	5, 7	1*0201, 1*1601
MBX	1	8, 63	7	12, 17	2, 7	1*0101, 1*0401
EBM	23	64	8	4	8	1*0201
FAQ	23, 68	14, 38	8, 12	13	7, 6	1*0201
LSR	32, 68	35, 52	12	15, 16	5, 6	1*0401, 1*1401
GGT	26, 31	14, 49	7, 8	1, 7	2, 5	1*0402, 1*110101

*B-LCL not used in previous study and added in this panel.