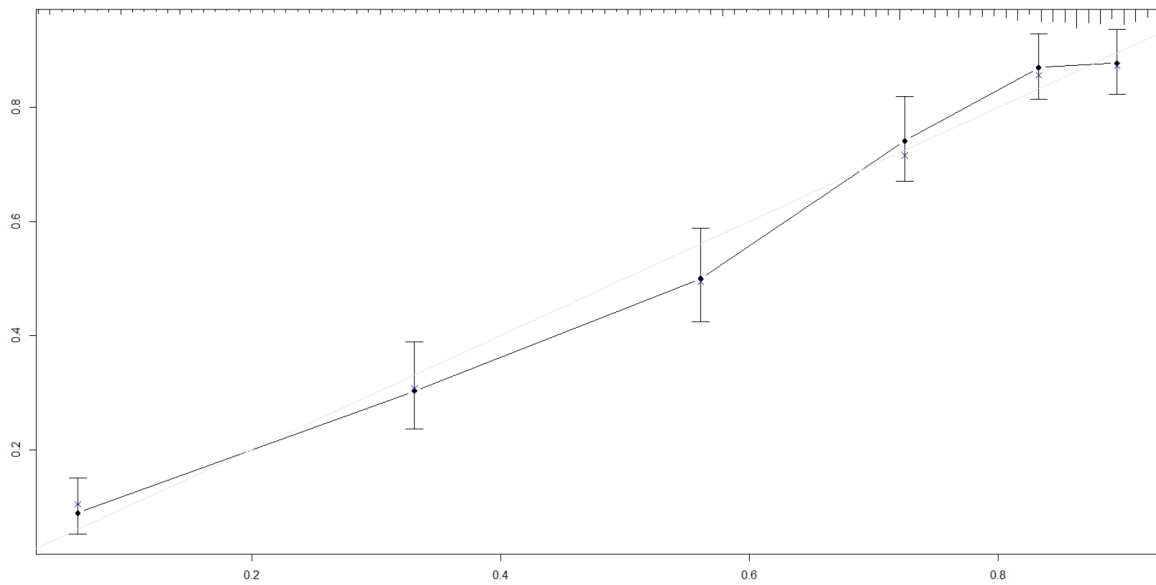


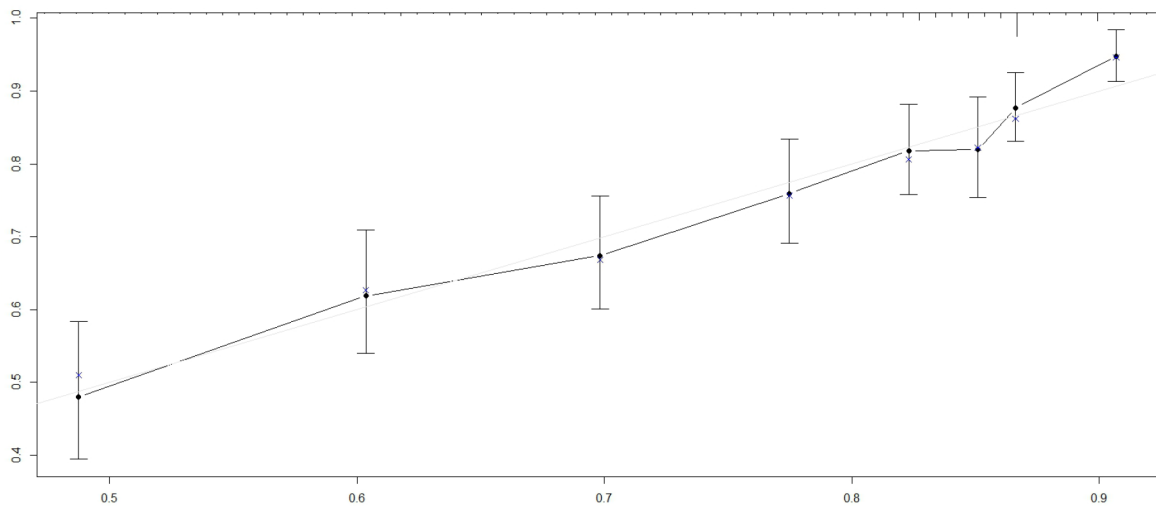
Novel nomograms for survival and progression in HPV+ and HPV- oropharyngeal cancer: a population-based study of 1,542 consecutive patients

Supplementary Materials



Footnote: Concordance index 0.79. Grey line represents the ideal relationship.

Supplementary Figure S1: Calibration curve for the OS model for surviving 5 years.



Footnote: concordance index: 0.68. Grey line represents the ideal relationship.

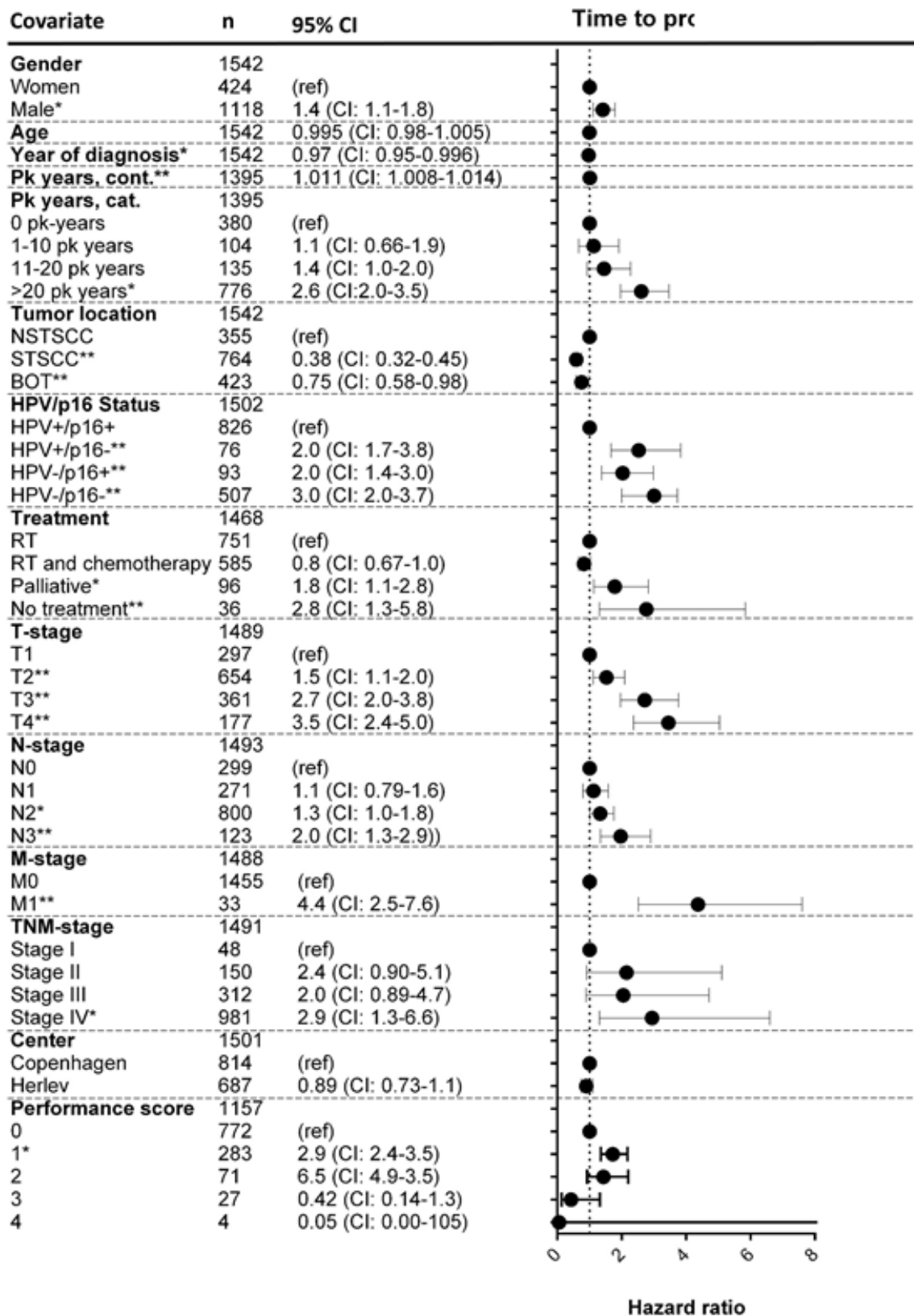
Supplementary Figure S2: Calibration curve for the TTP model for surviving 2 year.

Supplementary Table S1: Independent covariates for overall survival in the multivariate Cox regression model

	Hazard ratio for death	Lower CI	Upper CI	<i>P</i>
T classification				
T1	Ref			
T2	1.55	1.13	2.11	0.0060
T3	2.32	1.69	3.19	< 0.0001
T3	3.59	2.52	5.11	< 0.0001
N classification				
N0	Ref			
N1	1.59	1.17	2.17	0.0034
N2	2.00	1.54	2.60	< 0.0001
N3	3.59	2.48	5.19	< 0.0001
Treatment				
Radiotherapy	Ref			
Chemoradiotherapy	0.7	0.6	0.9	0.0042
Palliative	2.4	1.7	3.5	< 0.0001
No treatment	7.2	4.2	12.1	< 0.0001
HPV/p16				
HPV+/p16+	Ref			
HPV+/p16-	2.5	1.8	3.7	< 0.0001
HPV-/p16+	2.1	1.4	3.0	0.0001
HPV-/p16-	3.4	2.7	4.3	< 0.0001
Age	1.03	1.01	1.04	< 0.0001
Pack years	1.005	1.002	1.008	0.0015
Performance score				
0	Ref			
1	1.3	1.1	1.7	0.0105
2	2.1	1.5	2.9	< 0.0001
3	1.6	0.9	2.8	0.0905
4	7.9	2.1	29.9	0.0024

Footnote: CI, 95% confidence interval. The hazard ratio for age and pack years represents the increase in hazard ratio per 1 year increase.

Supplementary Table S2: Patient characteristics and their relationship to time to progression.



Footnote: The hazard ratios for age, year of diagnosis, and pack years represents the hazard ratio per year increase. RT: radiotherapy. BSCC: Base of tongue squamous cell carcinoma. STSCC and NSTSCC: Specified- and non-specified tonsillar squamous cell carcinomas.

Supplementary Table S3: Independent covariates for time to progression in the multivariate Cox regression model

	Hazard ratio for progression	Lower CI	Upper CI	<i>P</i>
N classification				
N0	Ref			
N1	1.4	1.0	2.0	0.0580
N2	1.9	1.4	2.6	< 0.0001
N3	2.5	1.6	3.8	< 0.0001
HPV/p16				
HPV+/p16+	Ref			
HPV+/p16-	2.3	1.5	3.6	0.0001
HPV-/p16+	1.8	1.2	2.7	0.0042
HPV-/p16-	3.0	2.3	3.8	< 0.0001
Pack years	1.008	1.004	1.011	< 0.0001

Footnote: CI, 95% confidence interval. The hazard ratio for pack years is per 1 pack year increment.

Supplementary Table S4: Independent covariates for survival after progression in multivariate Cox regression model

	Hazard ratio for death	Lower CI	Upper CI	<i>P</i>
Progression location				
Local	Ref			
Regional	0.5	0.4	0.8	0.0005
Distant	1.3	1.0	1.8	0.0424
HPV/p16				
HPV+/p16+	Ref			
HPV+/p16-	1.9	1.2	3.2	0.0101
HPV-/p16+	1.9	1.2	3.0	0.0069
HPV-/p16-	2.2	1.6	2.9	< 0.0001
Performance score				
0	Ref			
1	1.4	1.1	1.9	0.0127
2	2.3	1.4	3.6	0.0005
3	7.6	2.3	24.5	0.0007

Footnote: CI, confidence interval.