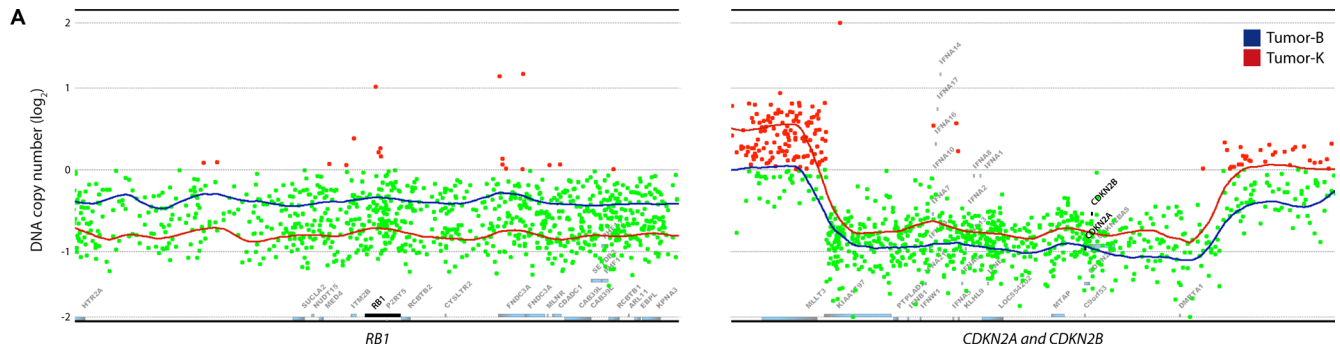
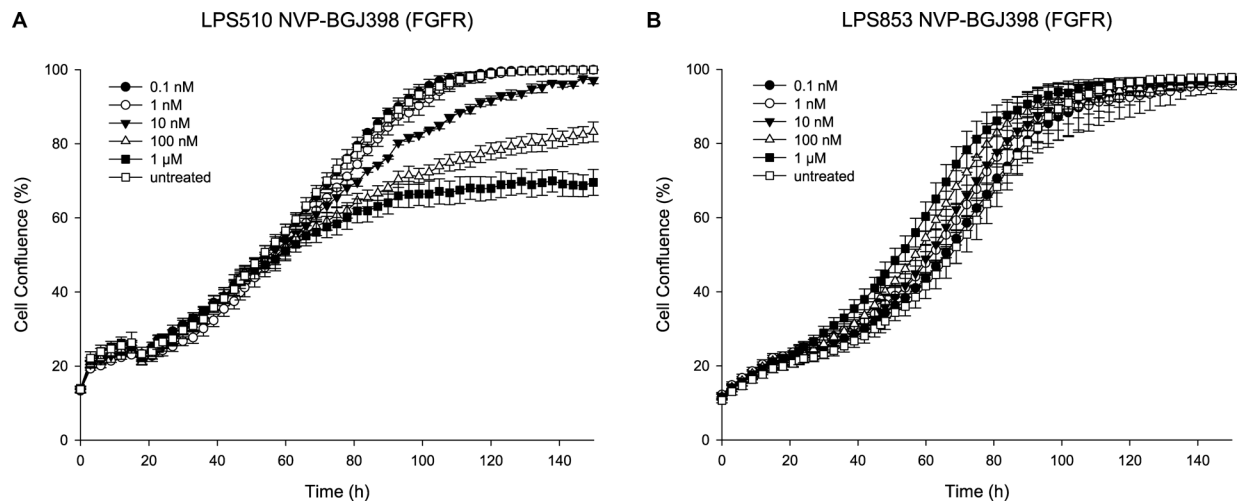


Preclinical evaluation of potential therapeutic targets in dedifferentiated liposarcoma

Supplementary Materials



Supplementary Figure S1: DNA copy number changes for tumor-B (blue) and -K (red). (A) Detailed view on the genomic region for *RB1*, *CDKN2A* and *CDKN2B*; red dots with a log₂ ratio > 0 and green dots with log₂ ratio < 0. The log₂ ratio is plotted according to position with triangular smoothing of 200 kb.



Supplementary Figure S2: The response of two additional DDLPS cell lines to FGFR inhibition with NVP-BGJ398. (A) Proliferation of LPS510 cells after inhibition of FGFR with NVP-BGJ398; ($n = 1$). (B) Proliferation of LPS853 cells after inhibition of FGFR with NVP-BGJ398; ($n = 1$). (A–B) Proliferation measured based on confluence over time; error bars represent standard error (SE) of the measurements. Untreated with DMSO concentration corresponding to that of the highest drug concentration.

Supplementary Table S1: Single nucleotide variations (SNVs) in tumor B, D and K. See Supplementary Table_S1

Supplementary Table S2: Shared mutations (missense, silent and splice site) between tumor B, D and K

| Gene Symbol | Chromosome | Start position | Reference Allele | Mutated Allele | Variant Classification | Mutant Expression |
|-------------|------------|----------------|------------------|----------------|------------------------|-------------------|
| FAM131C | 1 | 16385007 | C | T | Silent | No |
| DOCK7 | 1 | 63099204 | G | A | Missense Mutation | Yes |
| TSN | 2 | 122522834 | A | G | Missense Mutation | Yes |
| CYTIP | 2 | 158300390 | G | A | Missense Mutation | No |
| EDEM1 | 3 | 5255002 | A | G | Splice Site | Yes |
| MUC12 | 7 | 100638279 | T | C | Missense Mutation | No |
| MGAM | 7 | 141727465 | G | A | Missense Mutation | No |
| AQP7 | 9 | 33395108 | G | A | Silent | No |
| SVIL | 10 | 29762864 | C | T | Missense Mutation | Yes |
| NDUFA9 | 12 | 4778952 | G | A | Missense Mutation | Yes |
| DDX11 | 12 | 31242911 | C | T | Silent | Yes |
| COL2A1 | 12 | 48372514 | C | T | Missense Mutation | No |
| PPFIA2 | 12 | 81693145 | C | T | Missense Mutation | No |
| LTA4H | 12 | 96412657 | C | T | Missense Mutation | No |
| LTA4H | 12 | 96412678 | C | T | Missense Mutation | No |
| WDR66 | 12 | 122439498 | G | A | Missense Mutation | No |
| TPP2 | 13 | 103301494 | G | C | Missense Mutation | Yes |
| KCNK10 | 14 | 88658663 | A | G | Missense Mutation | No |
| DNAAF1 | 16 | 84182654 | C | T | Missense Mutation | No |
| COG1 | 17 | 71193530 | C | G | Missense Mutation | Yes |
| ASB9 | X | 15268665 | G | A | Missense Mutation | No |
| MCTS1 | X | 119740017 | G | C | Missense Mutation | No |

Supplementary Table S3: DNA copy number differences between tumor B and K. See Supplementary Table_S3

Supplementary Table S4: DNA copy number and gene expression between tumor B, NRH-LS1 and iMSC#3. See Supplementary Table_S4