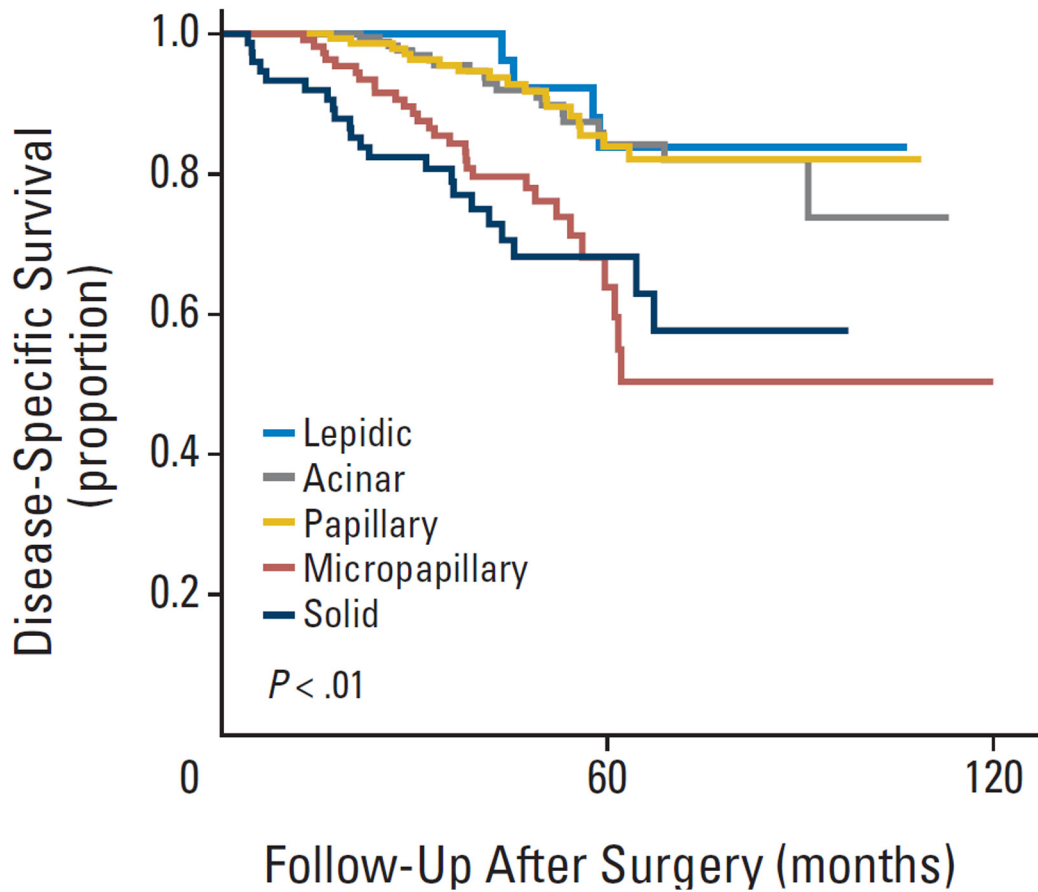
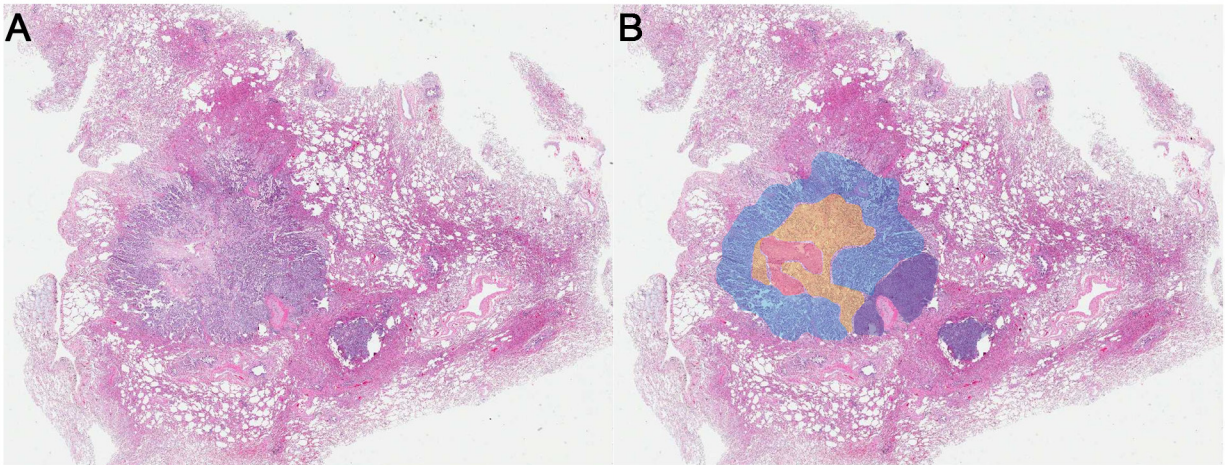


Pathologic heterogeneity of lung adenocarcinomas: A novel pathologic index predicts survival

SUPPLEMENTARY FIGURES AND TABLES



Supplementary Figure S1: Disease-specific survival curve according to all histologic predominant patterns from a previous publication by Hung et al [9].



Supplementary Figure S2: Microphotograph demonstrates an example of comprehensive semiquantitative histologic subtyping with elimination of the scar tissue in the validation cohort. A. Photomicrograph shows central scar tissue with surrounding areas of tumor cells (hematoxylin-eosin stain). **B.** Schema of tumor cells shows the various components of central scar tissue (red), acinar (yellow), papillary (blue), and solid (purple) subtypes.

Supplementary Table S1: Clinical and pathologic characteristics of the development cohort

Characteristic	No. of Patients (N=573)	%
Age (mean ± SD) (y)	63.8 ± 11.6	
Sex		
Male	305	53.2
Female	268	46.8
Tumor size (mean ± SD) (mm)	28 ± 14	
Pathologic stage		
Ia	142	24.8
Ib	232	40.5
IIa	57	9.9
IIb	24	4.2
IIIa	111	19.4
IIIb	7	1.2
T Status		
pT1	166	29.0
pT2	349	60.9
pT3	38	6.6
pT4	20	3.5
N Status		
pN0	413	72.1
pN1	60	10.5
pN2	100	17.4
Predominant subtype		
Lepidic	35	6.1
Acinar	193	33.7
Papillary	155	27.1
Micropapillary	112	19.5
Solid	78	13.6
No. of subtypes comprising the tumor		
1	66	11.5
2	251	43.8
3	205	35.8
4	47	8.2
5	4	0.7

SD = Standard deviation

Supplementary Table S2: Number of patterns in each tertile group according to each proposed pathologic index

	No. of patterns	1 st tertile				2 nd tertile				3 rd tertile				P value
		1	2	3	4	1	2	3	4	1	2	3	4	
Pathologic Index	1	30 (60)	20 (40)	0 (0)	0 (0)	0 (0)	46 (94)	3 (6)	0 (0)	2 (4)	29 (59)	17 (35)	1 (2)	<0.001
	2	30 (60)	19 (38)	1 (2)	0 (0)	0 (0)	45 (92)	4 (8)	0 (0)	2 (4)	31 (63)	15 (31)	1 (2)	<0.001
	3	13 (26)	37 (77)	0 (0)	0 (0)	18 (37)	27 (55)	4 (8)	0 (0)	1 (2)	31 (63)	16 (33)	1 (2)	<0.001
	4	32 (33)	65 (67)	0 (0)	0 (0)	0 (0)	4 (100)	0 (0)	0 (0)	0 (0)	26 (55)	20 (43)	1 (2)	<0.001

*Numbers in parentheses are percentages.

Supplementary Table S3: Distribution of the predominant subtype in each tertile group according to each proposed pathologic index.

See Supplementary File 1