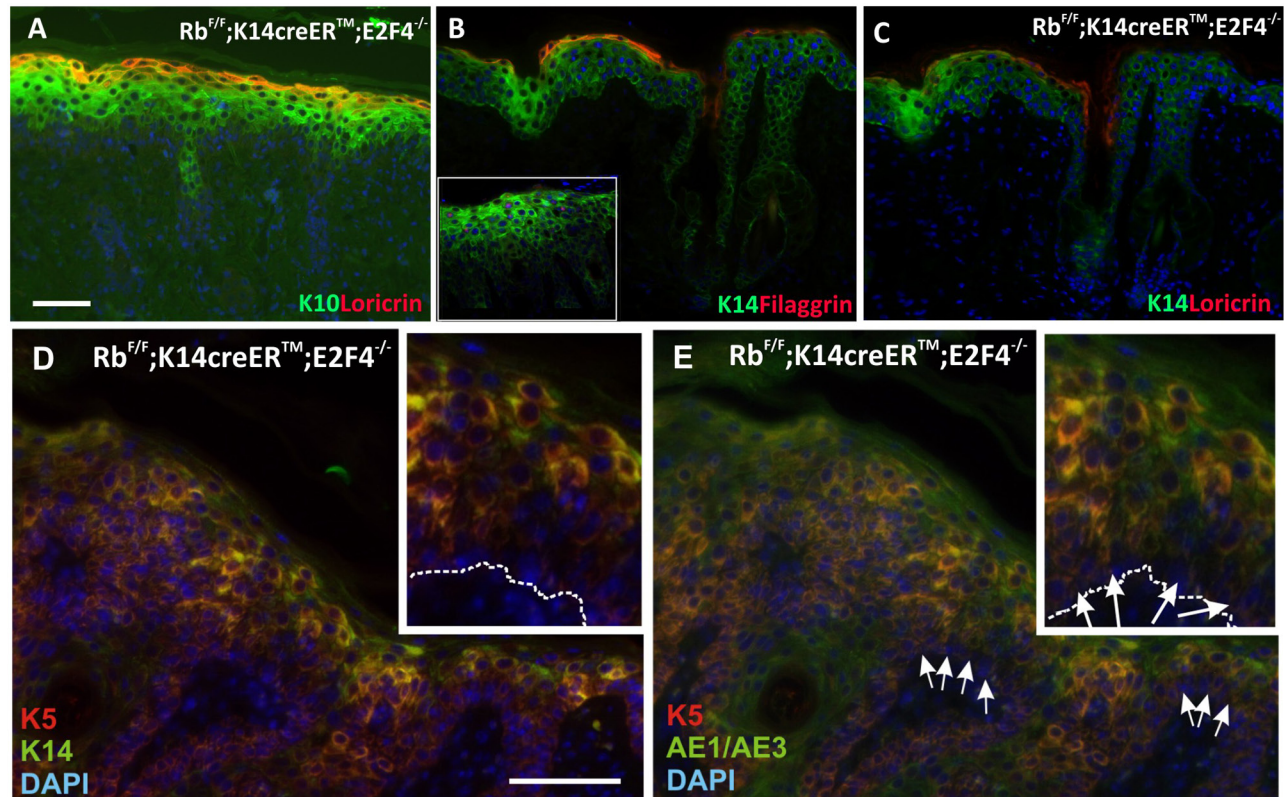
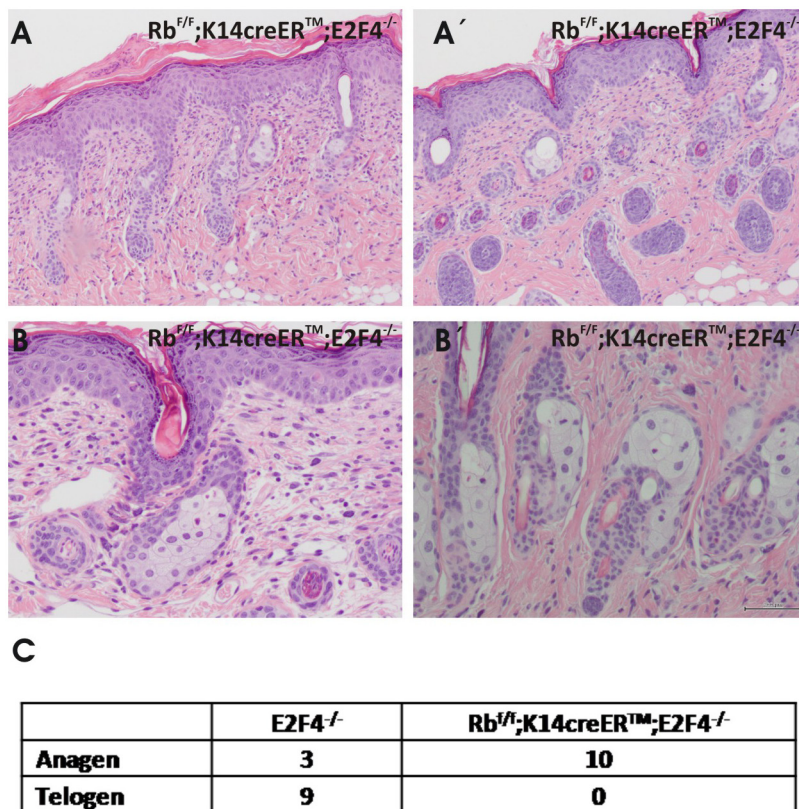


## Deregulation of the pRb-E2F4 axis alters epidermal homeostasis and favors tumor development

### SUPPLEMENTARY FIGURES AND TABLES



**Supplementary Figure S1:  $Rb^{F/F};K14creER^{TM};E2F4^{-/-}$  epidermis presents aberrant epidermal differentiation.** A-E. Representative immunofluorescence of  $Rb^{F/F};K14creER^{TM};E2F4^{-/-}$  epidermis for K10 (green) and loricrin (red) (A); K14 (green) and filaggrin (red) (B); K14 (green) and loricrin (red) (C). stratum corneum proteins present a patched pattern opposite to K14 expression. D) K5 (red) and K14 (green). E) K5 (red) and AE1/AE3 (green). Nuclei were stained with DAPI. Bars= 50  $\mu$ m.



**Supplementary Figure S2: Aberrant hair follicles and sebaceous glands in Rb<sup>F/F</sup>;K14creER<sup>TM</sup>;E2F4<sup>-/-</sup> epidermis.** Representative H&E sections of Rb<sup>F/F</sup>;K14creER<sup>TM</sup>;E2F4<sup>-/-</sup> epidermis showing aberrant anagens **A, A'** and sebaceous glands **B, B'**. **C.** Number of mice with aberrant anagen in E2F4<sup>-/-</sup>(n=12) and Rb<sup>F/F</sup>;K14creER<sup>TM</sup>;E2F4<sup>-/-</sup>mice (n=10). Paired littermates were analyzed at 4 and 12 months after tamoxifen treatment. Bars= 50 μm (B, B') Bars= 200 μm).

**Supplementary Table S1: Genes deregulated between Rb<sup>F/F</sup>;K14creER<sup>TM</sup>;E2F4<sup>-/-</sup> and Rb<sup>F/F</sup>;K14creER<sup>TM</sup> skin.**

See Supplementary File 1

**Supplementary Table S2: Genes deregulated between Rb<sup>F/F</sup>;K14creER<sup>TM</sup>;E2F4<sup>-/-</sup> and Rb<sup>F/F</sup>;K14creER<sup>TM</sup>;E2F1<sup>-/-</sup> skin.**

See Supplementary File 2