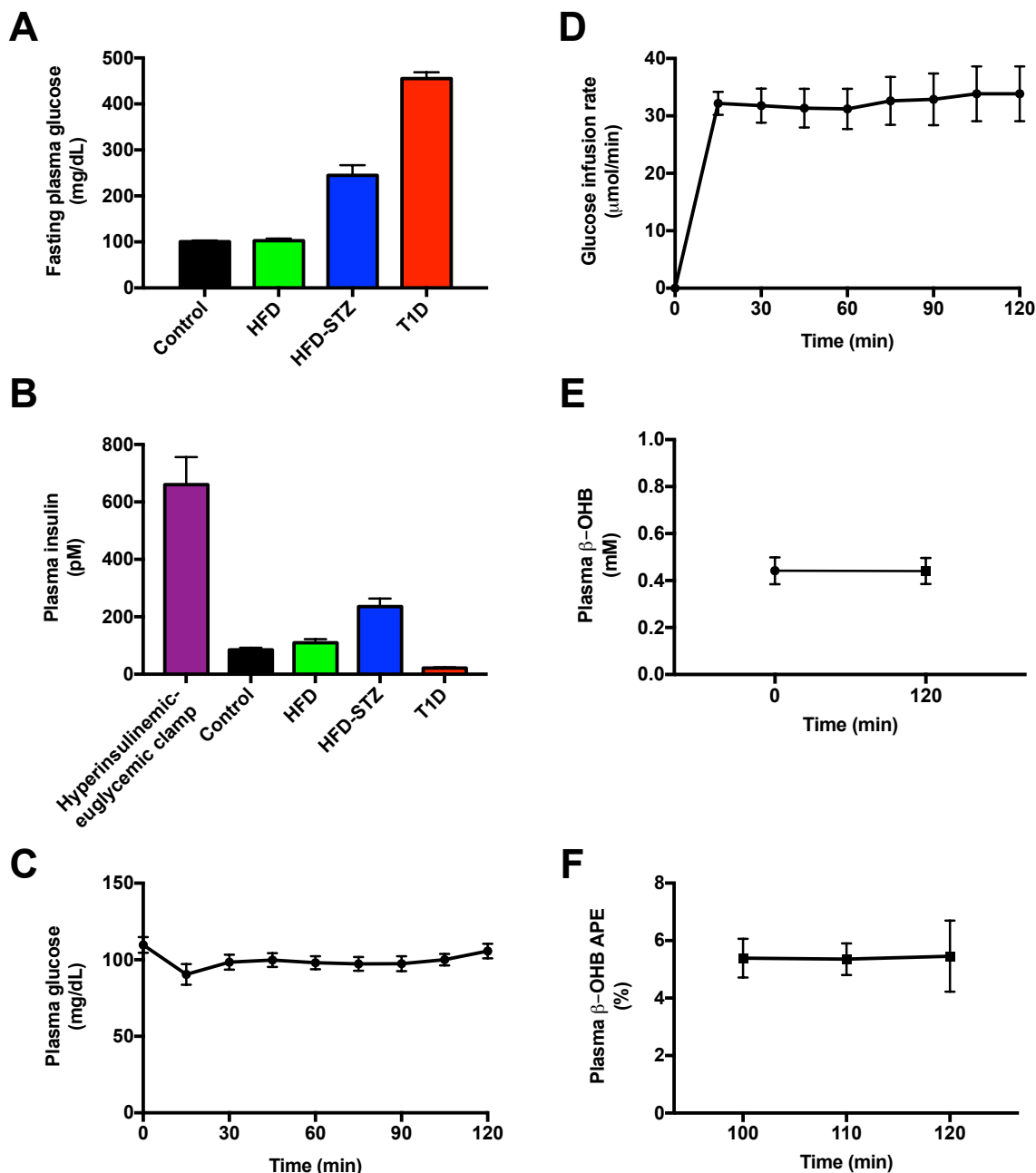
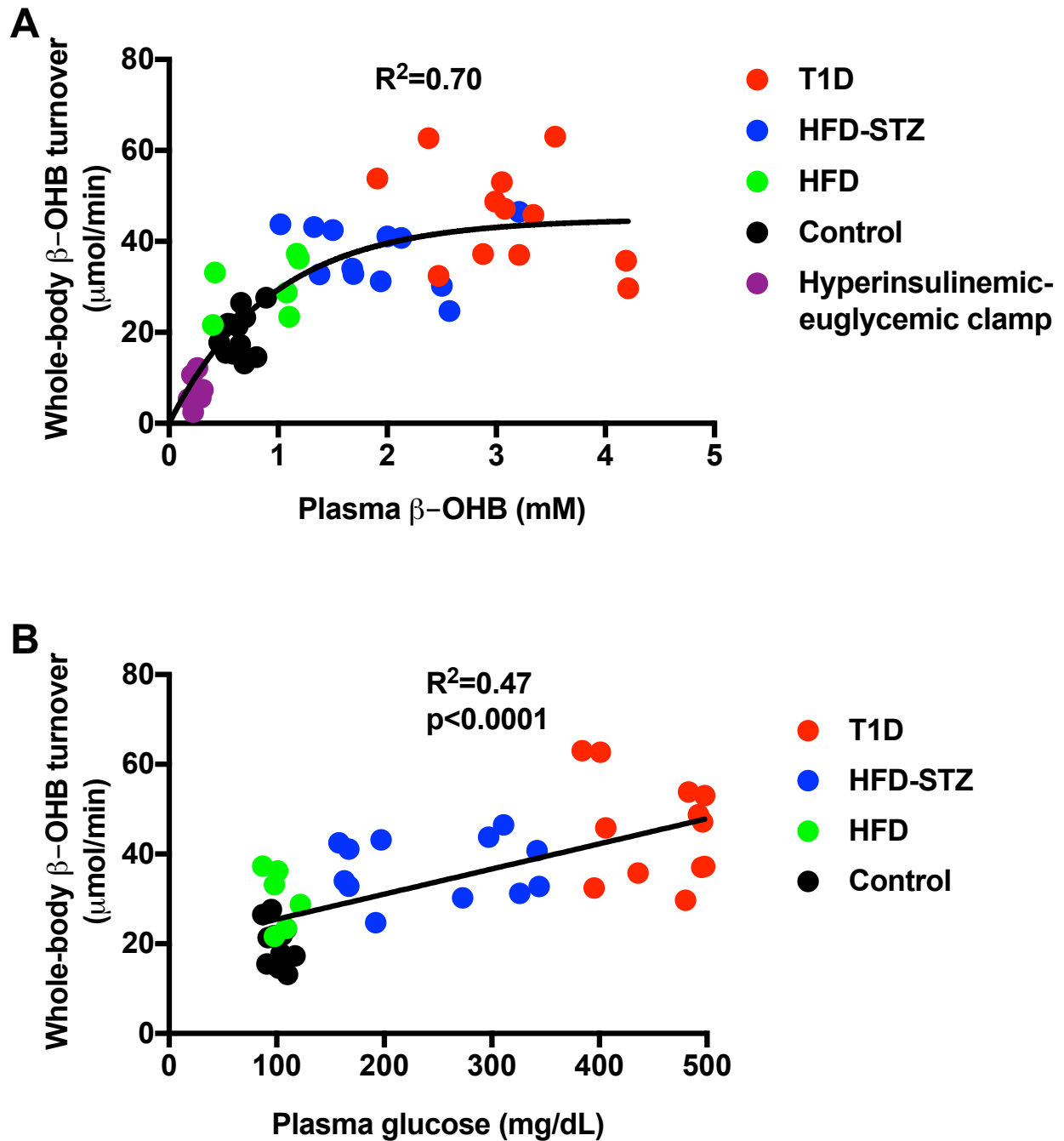


# Figure S1



**Supplemental Figure S1, Related to Figure 3.** This study employed a variety of rat models exhibiting contrasting metabolic phenotypes. (A) Fasting plasma glucose concentrations. In panels (A)-(B), n=5 (hyperinsulinemic-euglycemic clamp), 6 (HFD), or 12 (control, HFD-STZ, T1D) rats per group. (B) Plasma insulin concentrations at the end of the tracer study. (C)-(D) Plasma glucose and glucose infusion rate during the hyperinsulinemic-euglycemic clamps (n=8). (E) Plasma β-OHB in control rats (n=12) at the beginning and end of the tracer study. (F) Plasma β-OHB enrichment at the final three time points of the clamp (n=8). In all panels, data are the mean ± S.E.M.

**Figure S2**



**Supplemental Figure S2, Related to Figures 4 and 5.**  $\beta$ -OHB turnover correlates with both plasma  $\beta$ -OHB and plasma glucose concentrations. (A) Correlation between whole-body  $\beta$ -OHB turnover and plasma  $\beta$ -OHB. (B) Correlation between whole-body  $\beta$ -OHB turnover and fasting plasma glucose concentrations.