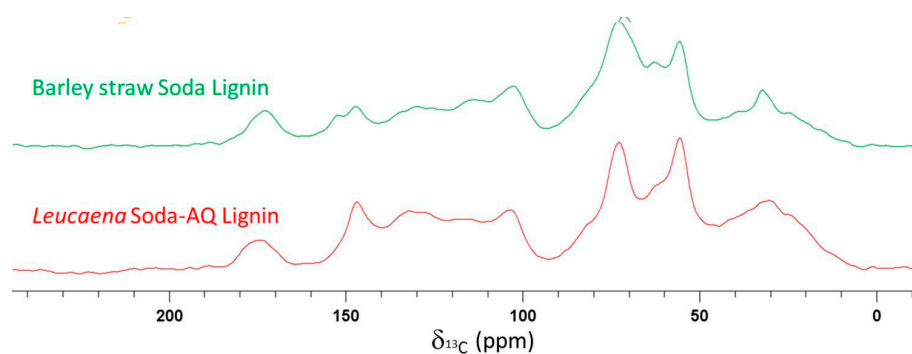
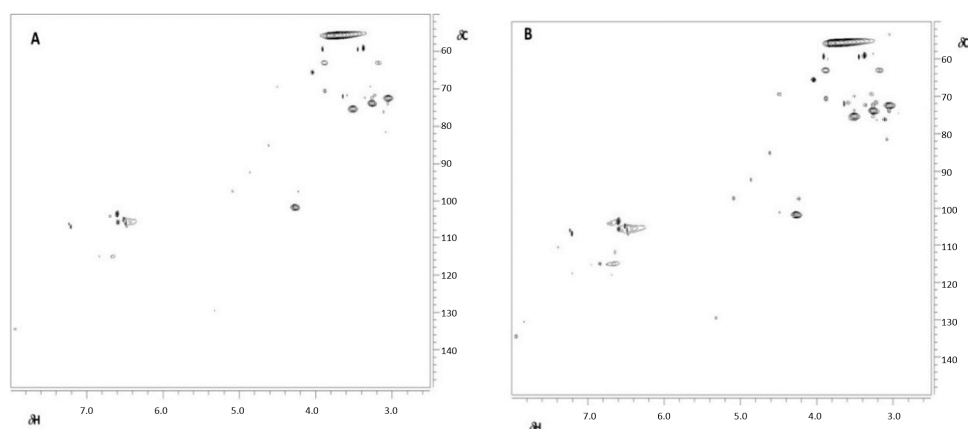


# Supplementary Materials: Isolation and Characterization of *Gramineae* and *Fabaceae* Soda Lignins

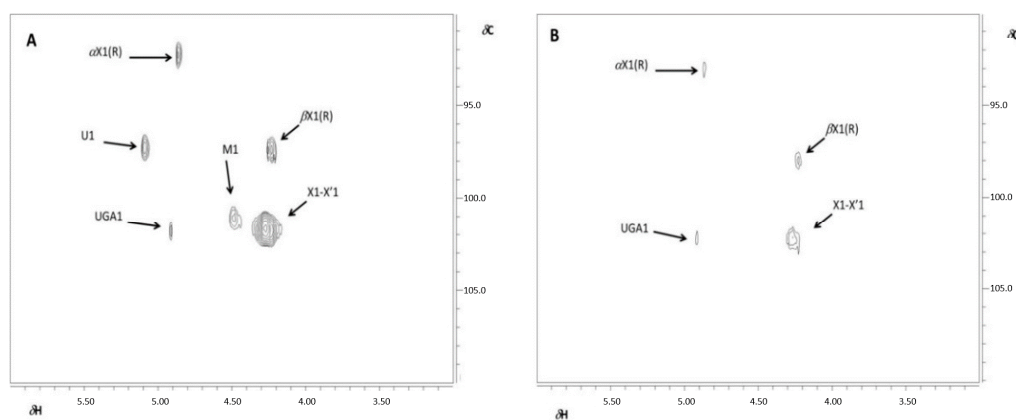
Juan Domínguez-Robles, Rafael Sánchez, Eduardo Espinosa, Davide Savy, Pierluigi Mazzei, Alessandro Piccolo and Alejandro Rodríguez



**Figure S1.**  $^{13}\text{C}$ -CPMAS solid-state NMR spectra of lignin samples from barley straw and *Leucaena leucocephala* lignin extracts.



**Figure S2.**  $^{13}\text{C}$ - $^1\text{H}$  2D-HSQC NMR spectra of lignins isolated from barley straw (A) and *Leucaena leucocephala* (B).



**Figure S3.** Anomeric part of the HSQC spectra of lignins isolated from *Chamaecytisus proliferus* (A) and wheat straw (B), respectively. The anomeric parts of the HSQC spectra of lignins isolated from *Leucaena leucocephala* and barley straw are the same as those presented for *Chamaecytisus proliferus*.