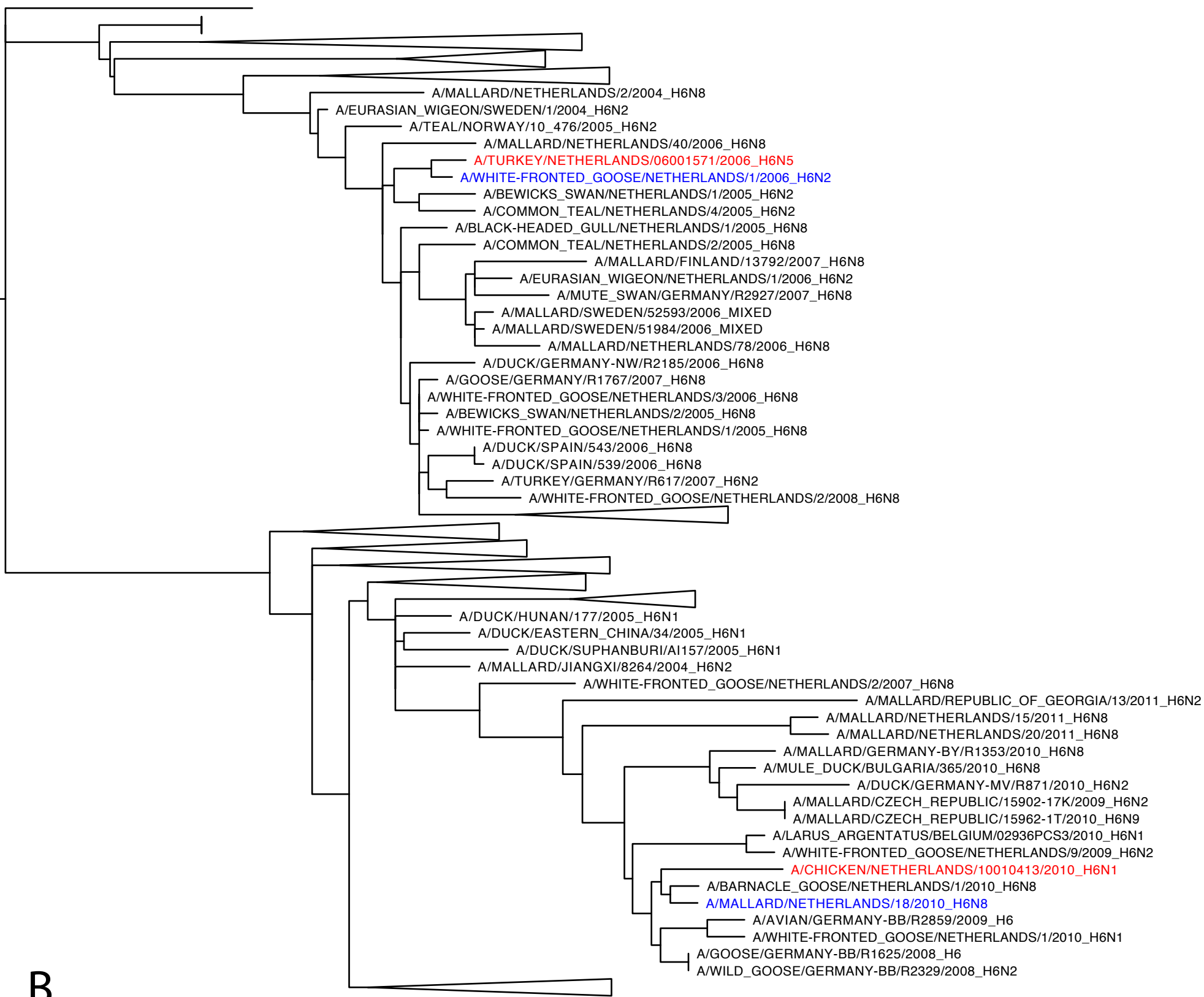


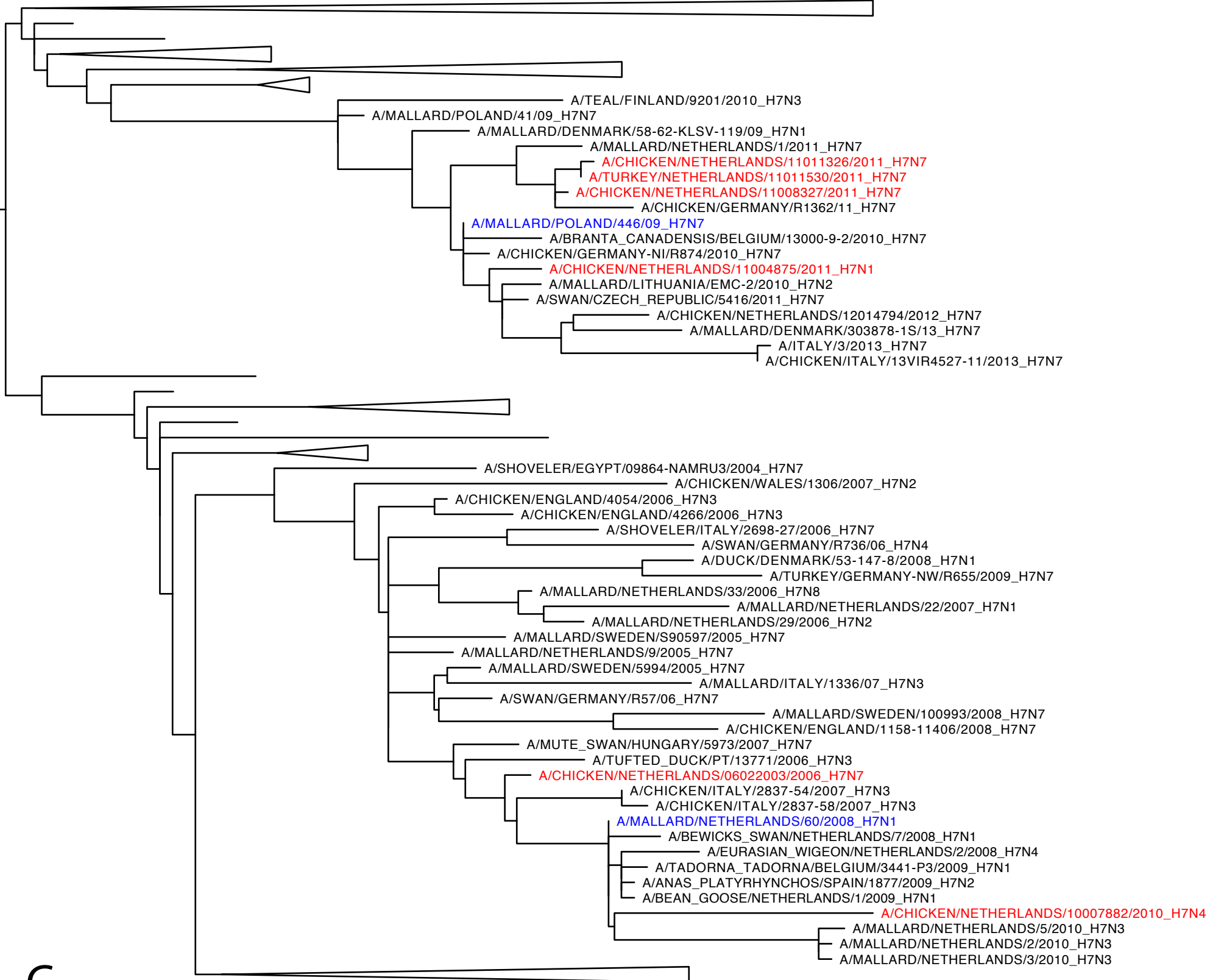
A

0.02



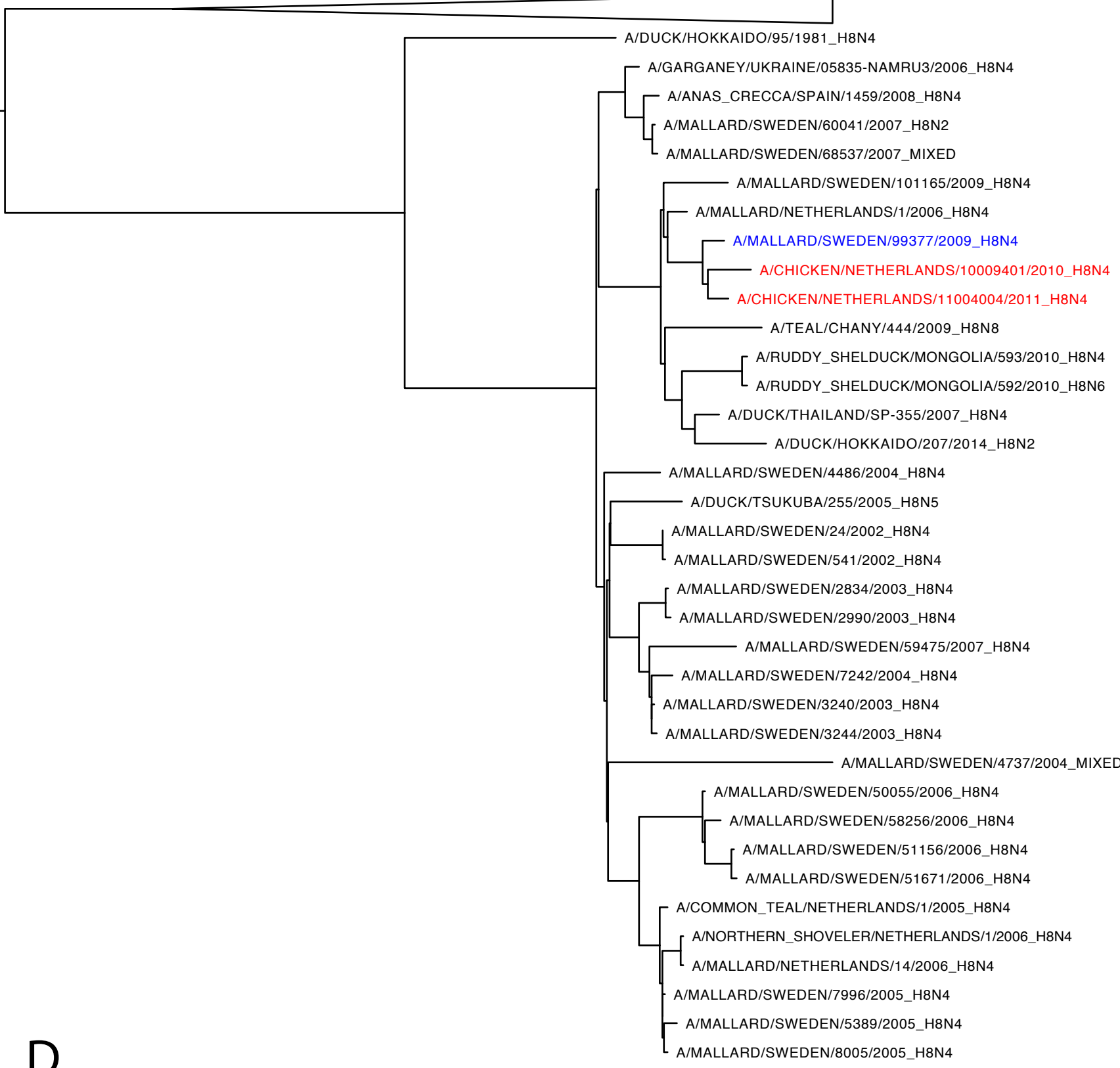
B

0.01



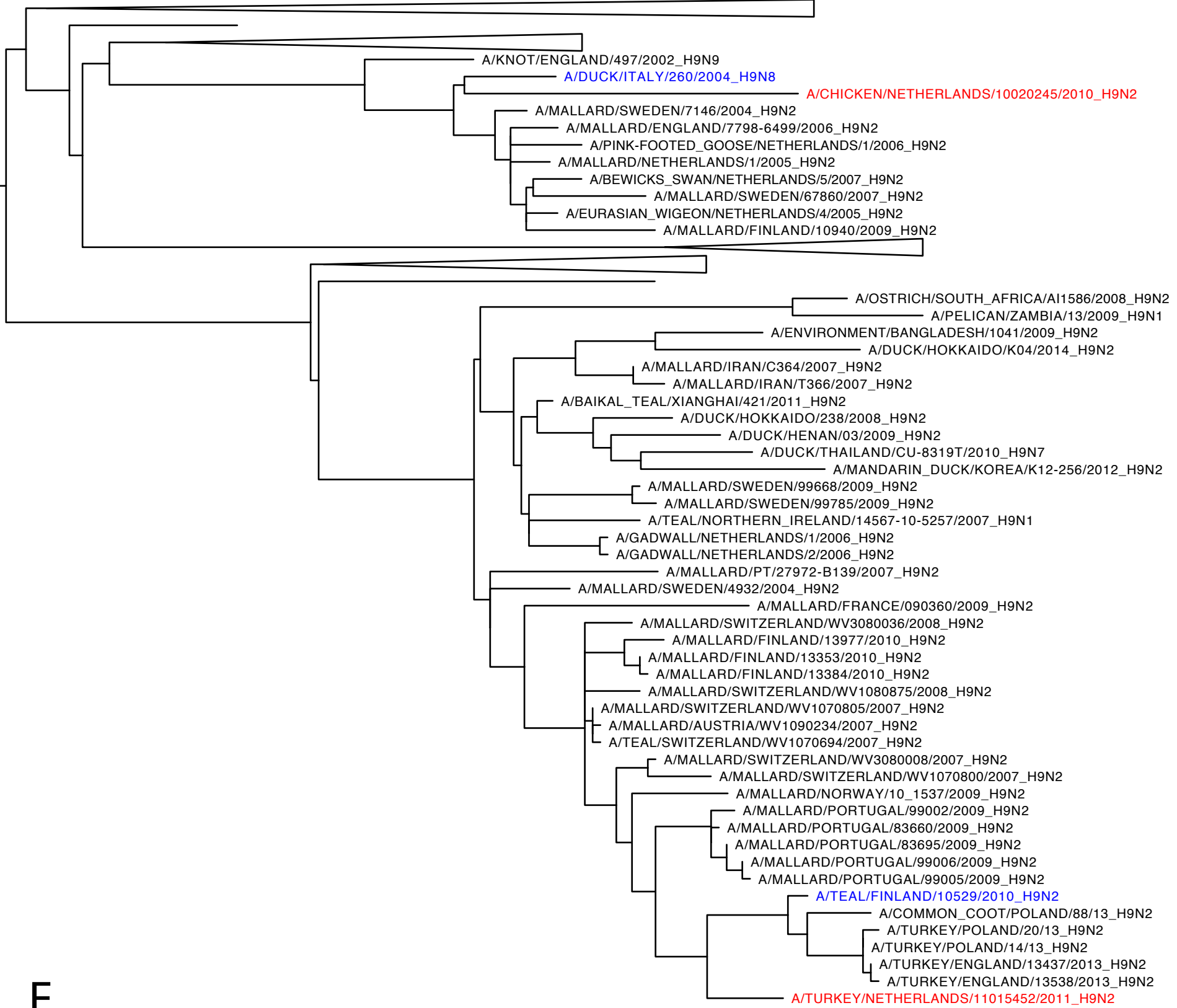
C

0.0070



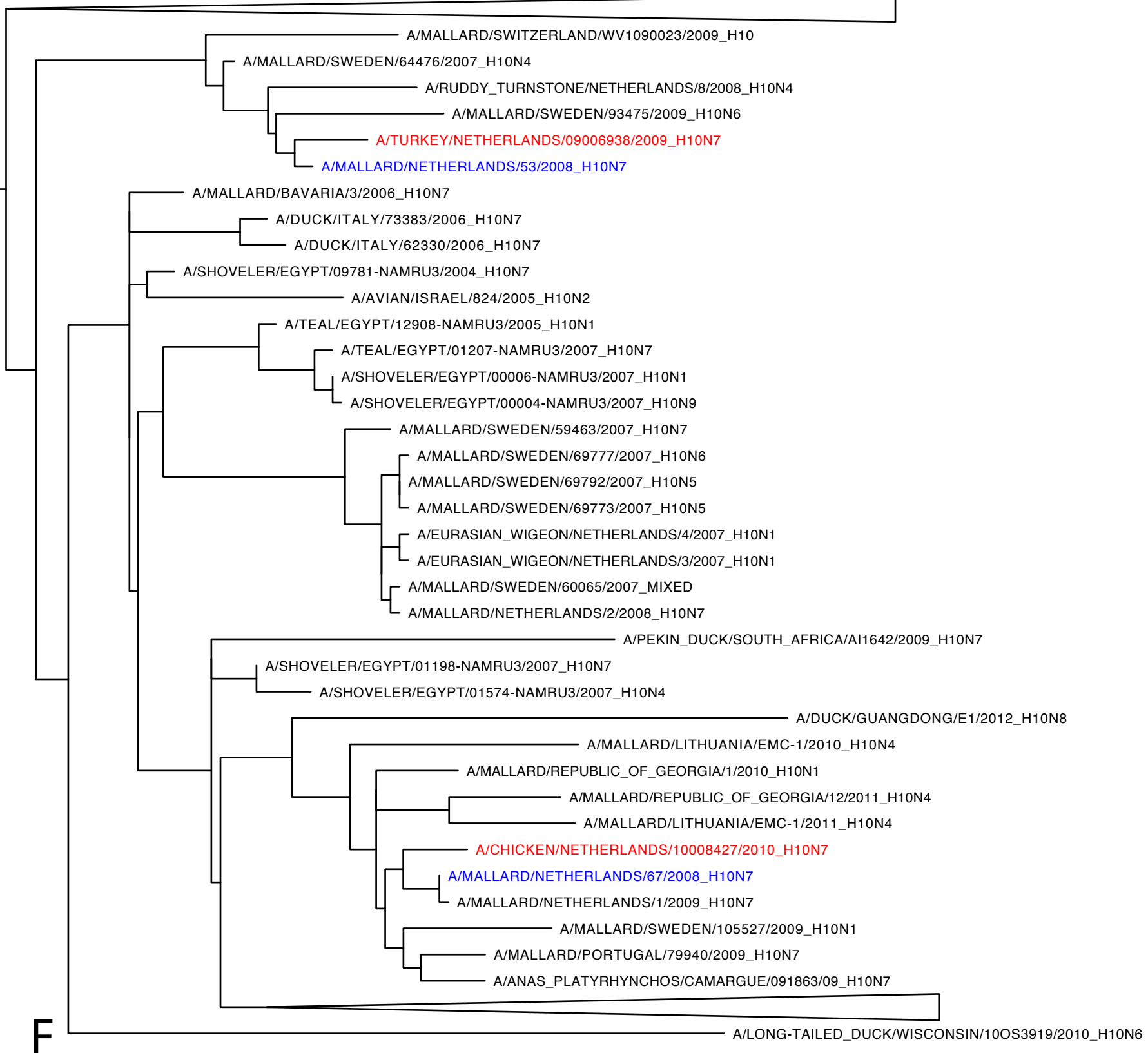
D

0.05



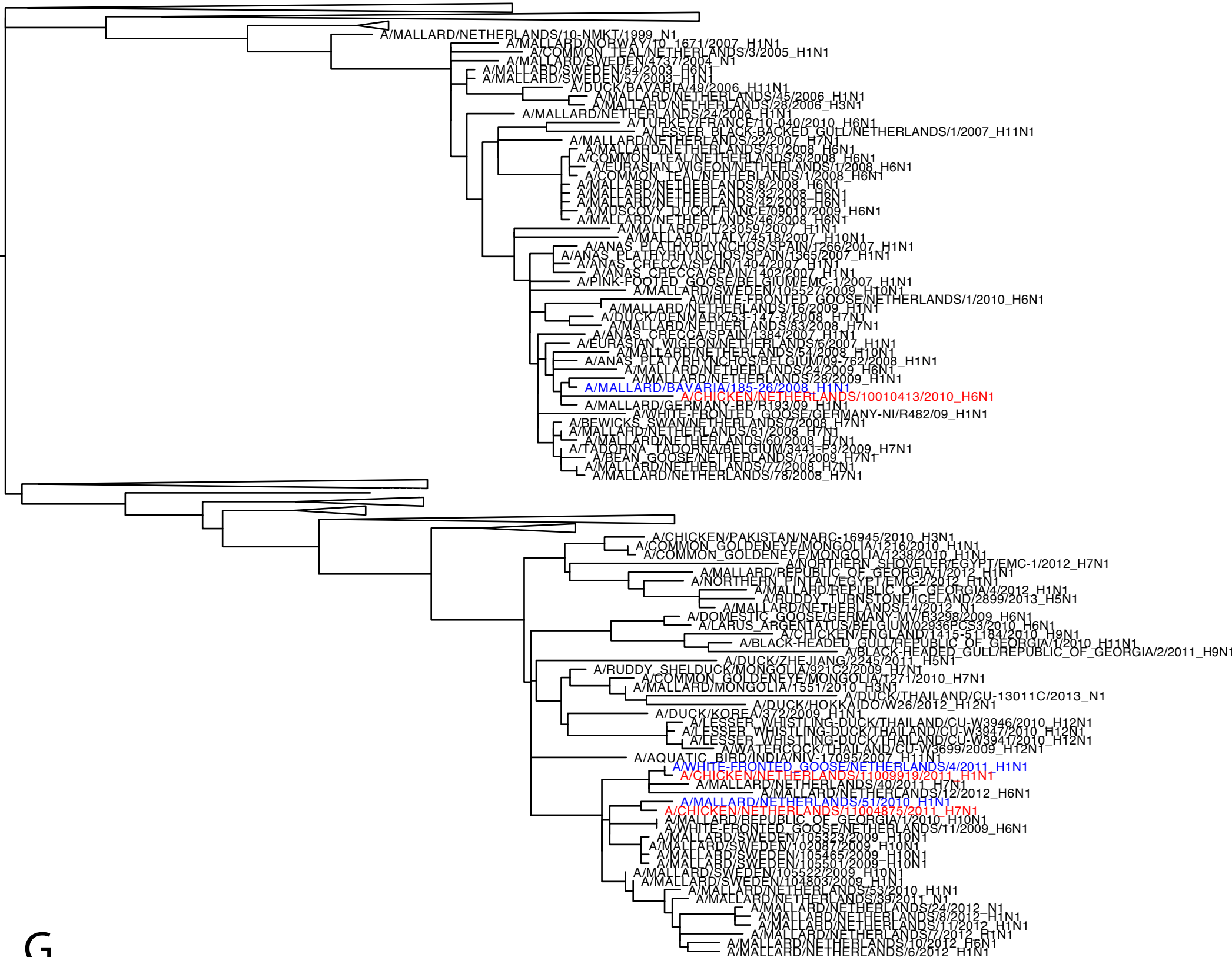
E

0.02



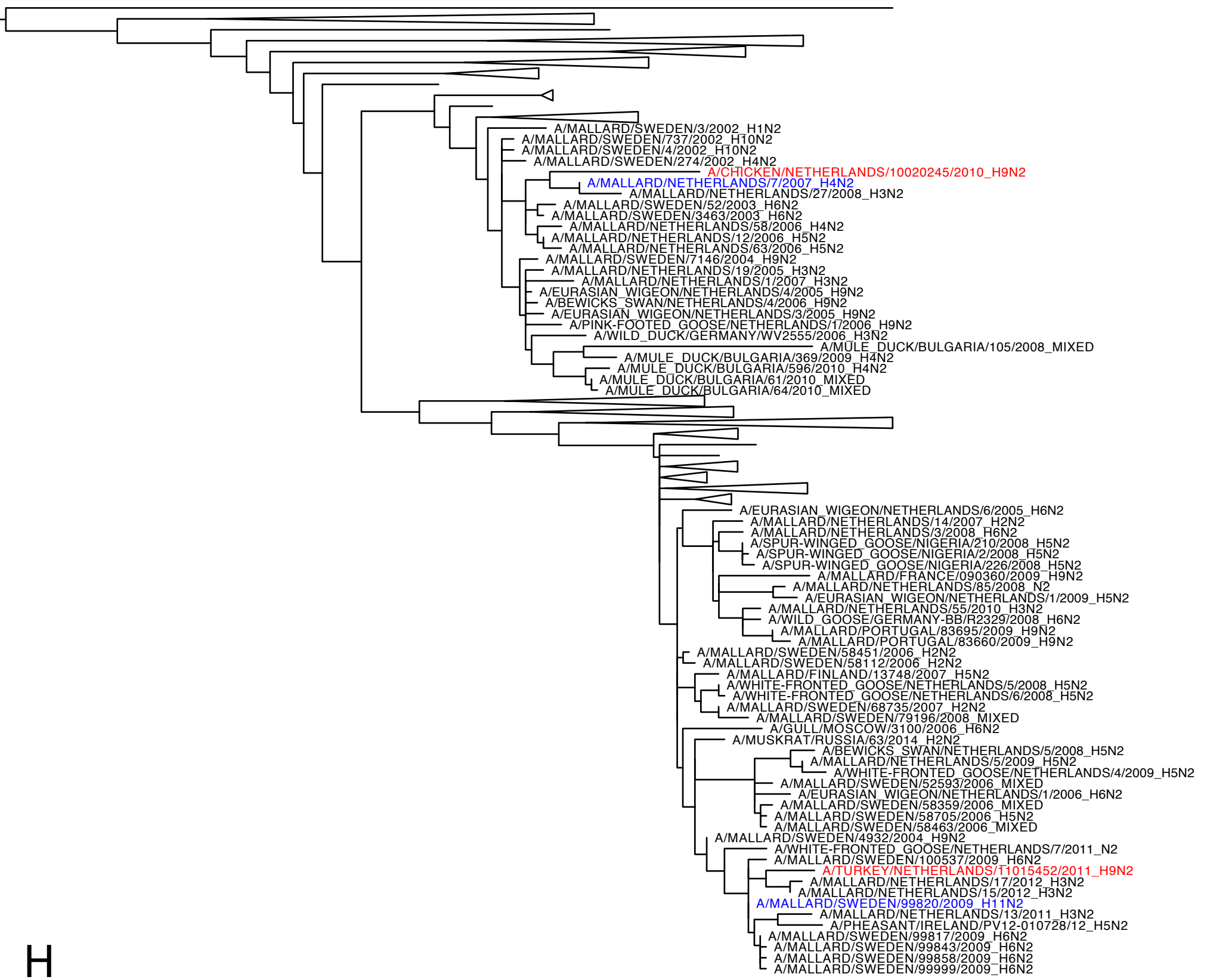
F

0.02



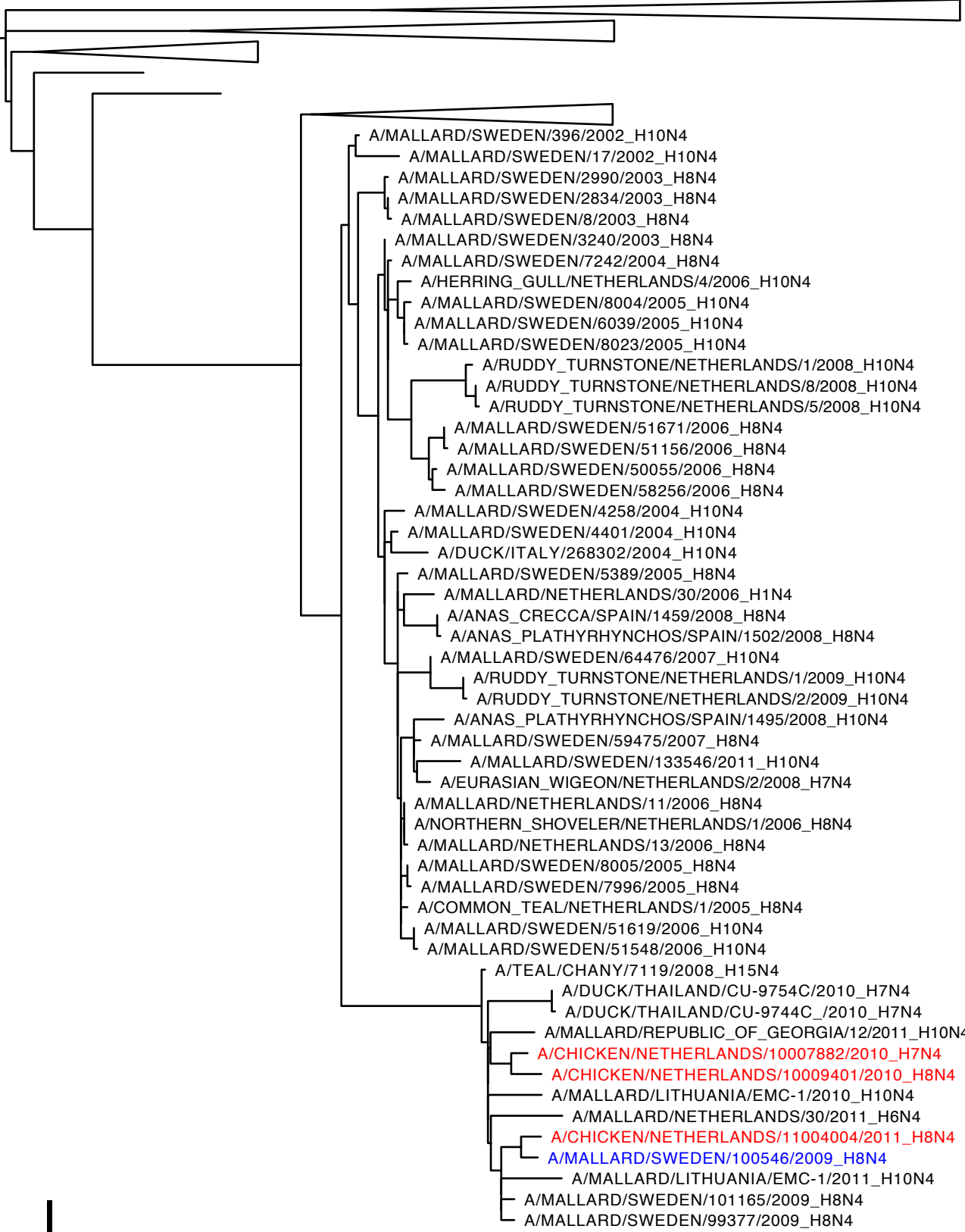
G

0.02



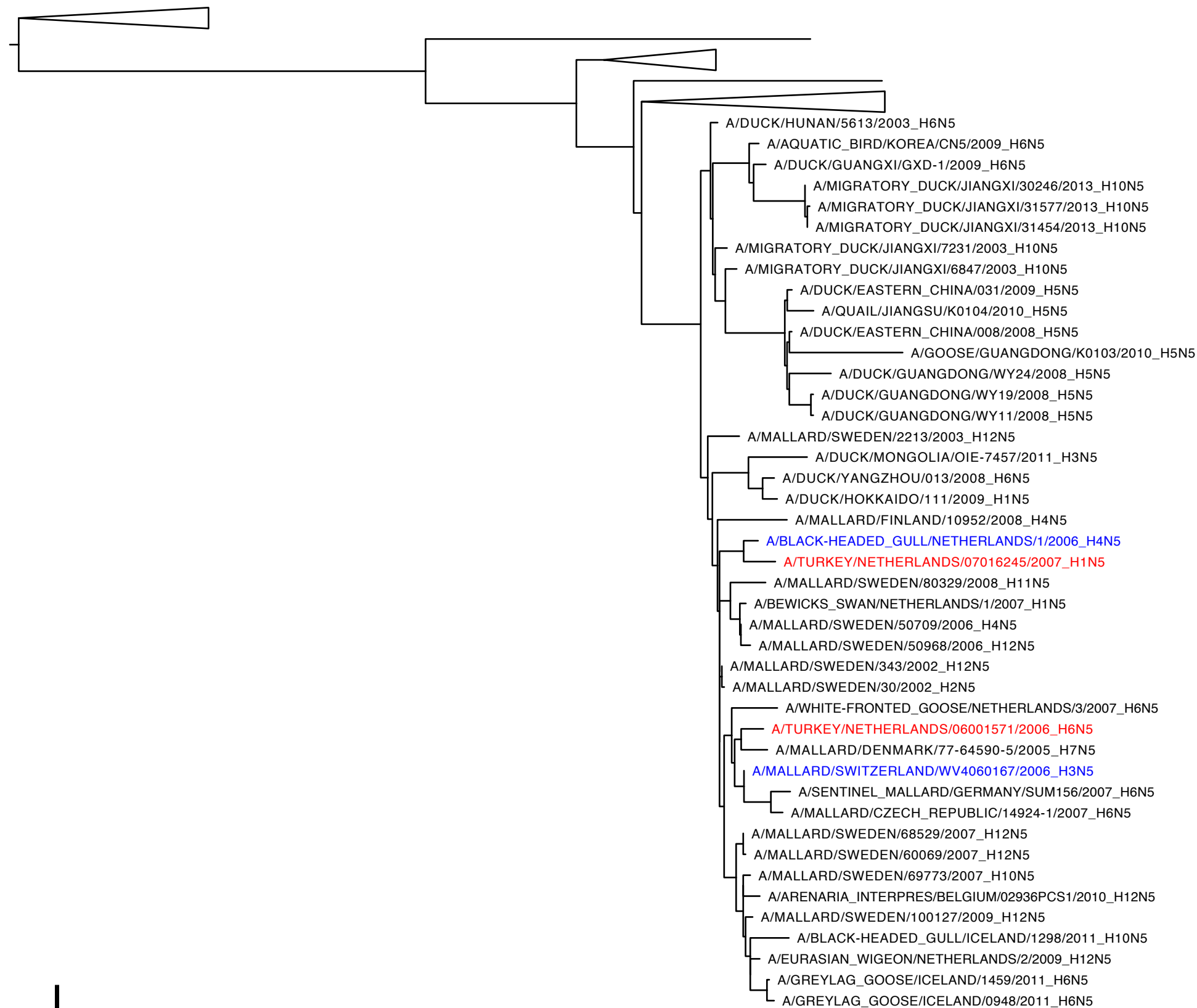
H

0.03



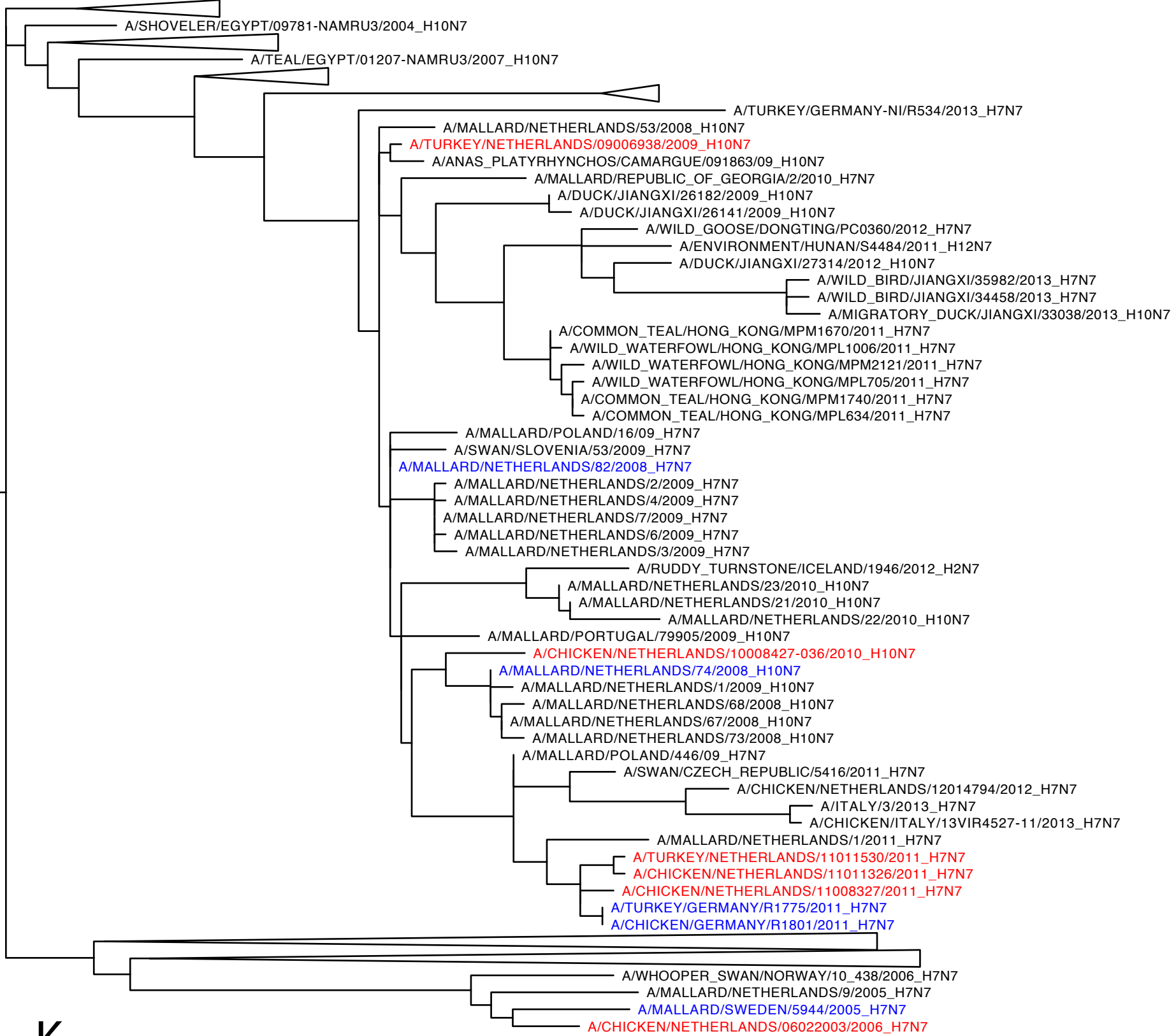
A/MALLARD/SWEDEN/396/2002_H10N4
 A/MALLARD/SWEDEN/17/2002_H10N4
 A/MALLARD/SWEDEN/2990/2003_H8N4
 A/MALLARD/SWEDEN/2834/2003_H8N4
 A/MALLARD/SWEDEN/8/2003_H8N4
 A/MALLARD/SWEDEN/3240/2003_H8N4
 A/MALLARD/SWEDEN/7242/2004_H8N4
 A/HERRING_GULL/NETHERLANDS/4/2006_H10N4
 A/MALLARD/SWEDEN/8004/2005_H10N4
 A/MALLARD/SWEDEN/6039/2005_H10N4
 A/MALLARD/SWEDEN/8023/2005_H10N4
 A/RUDDY_TURNSTONE/NETHERLANDS/1/2008_H10N4
 A/RUDDY_TURNSTONE/NETHERLANDS/8/2008_H10N4
 A/RUDDY_TURNSTONE/NETHERLANDS/5/2008_H10N4
 A/MALLARD/SWEDEN/51671/2006_H8N4
 A/MALLARD/SWEDEN/51156/2006_H8N4
 A/MALLARD/SWEDEN/50055/2006_H8N4
 A/MALLARD/SWEDEN/58256/2006_H8N4
 A/MALLARD/SWEDEN/4258/2004_H10N4
 A/MALLARD/SWEDEN/4401/2004_H10N4
 A/DUCK/ITALY/268302/2004_H10N4
 A/MALLARD/SWEDEN/5389/2005_H8N4
 A/MALLARD/NETHERLANDS/30/2006_H1N4
 A/ANAS_CRECCA/SPAIN/1459/2008_H8N4
 A/ANAS_PLATHYRHYNCHOS/SPAIN/1502/2008_H8N4
 A/MALLARD/SWEDEN/64476/2007_H10N4
 A/RUDDY_TURNSTONE/NETHERLANDS/1/2009_H10N4
 A/RUDDY_TURNSTONE/NETHERLANDS/2/2009_H10N4
 A/ANAS_PLATHYRHYNCHOS/SPAIN/1495/2008_H10N4
 A/MALLARD/SWEDEN/59475/2007_H8N4
 A/MALLARD/SWEDEN/133546/2011_H10N4
 A/EURASIAN_WIGEON/NETHERLANDS/2/2008_H7N4
 A/MALLARD/NETHERLANDS/11/2006_H8N4
 A/NORTHERN_SHOVELER/NETHERLANDS/1/2006_H8N4
 A/MALLARD/NETHERLANDS/13/2006_H8N4
 A/MALLARD/SWEDEN/8005/2005_H8N4
 A/MALLARD/SWEDEN/7996/2005_H8N4
 A/COMMON_TEAL/NETHERLANDS/1/2005_H8N4
 A/MALLARD/SWEDEN/51619/2006_H10N4
 A/MALLARD/SWEDEN/51548/2006_H10N4
 A/TEAL/CHANY/7119/2008_H15N4
 A/DUCK/THAILAND/CU-9754C/2010_H7N4
 A/DUCK/THAILAND/CU-9744C_/2010_H7N4
 A/MALLARD/REPUBLIC_OF_GEORGIA/12/2011_H10N4
 A/CHICKEN/NETHERLANDS/10007882/2010_H7N4
 A/CHICKEN/NETHERLANDS/10009401/2010_H8N4
 A/MALLARD/LITHUANIA/EMC-1/2010_H10N4
 A/MALLARD/NETHERLANDS/30/2011_H6N4
 A/CHICKEN/NETHERLANDS/11004004/2011_H8N4
 A/MALLARD/SWEDEN/100546/2009_H8N4
 A/MALLARD/LITHUANIA/EMC-1/2011_H10N4
 A/MALLARD/SWEDEN/101165/2009_H8N4
 A/MALLARD/SWEDEN/99377/2009_H8N4

0.05



J

0.05



K

0.02

S2 Figure. Maximum Likelihood trees of influenza A virus HA and NA subtypes as detected in poultry, the Netherlands, 2006 - 2011. H1 (A), H6 (B), H7 (C), H8 (D), H9 (E), H10 (F), N1 (G), N2 (H), N4 (I), N5 (J) and N7 (K). Red indicates influenza viruses isolated from poultry in the Netherlands within this study period and blue indicates the genetically closest influenza virus isolated from wild birds.