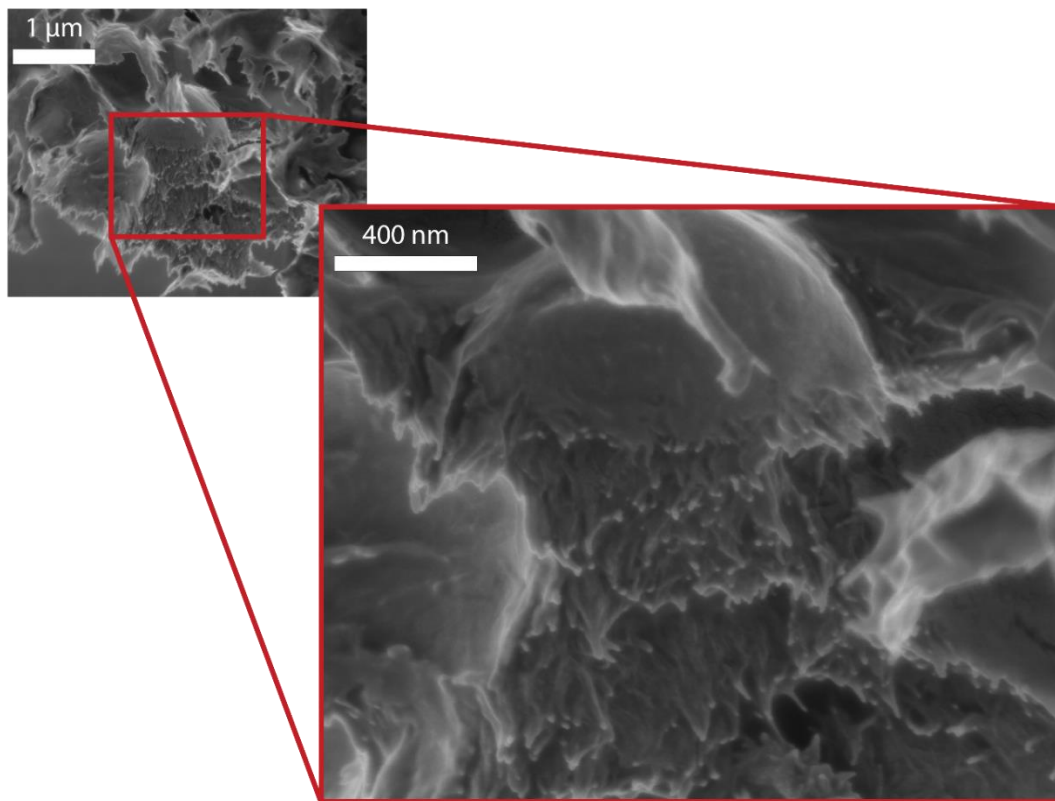


## Supporting information

Title: "Disordered nanostructured cellulose for enhanced scattering"

Author(s): Caixeiro, Soraya; Peruzzo, Matilda; Onelli, Olimpia; Vignolini, Silvia; Sapienza, Riccardo.



**Figure S1-** High magnification SEM image of the cellulose photonic glass. The whisker-like geometry of the CNCs which arrange in close-packing is visible. The sample was sputter coated with a few nm of Au/Pd to prevent charging.