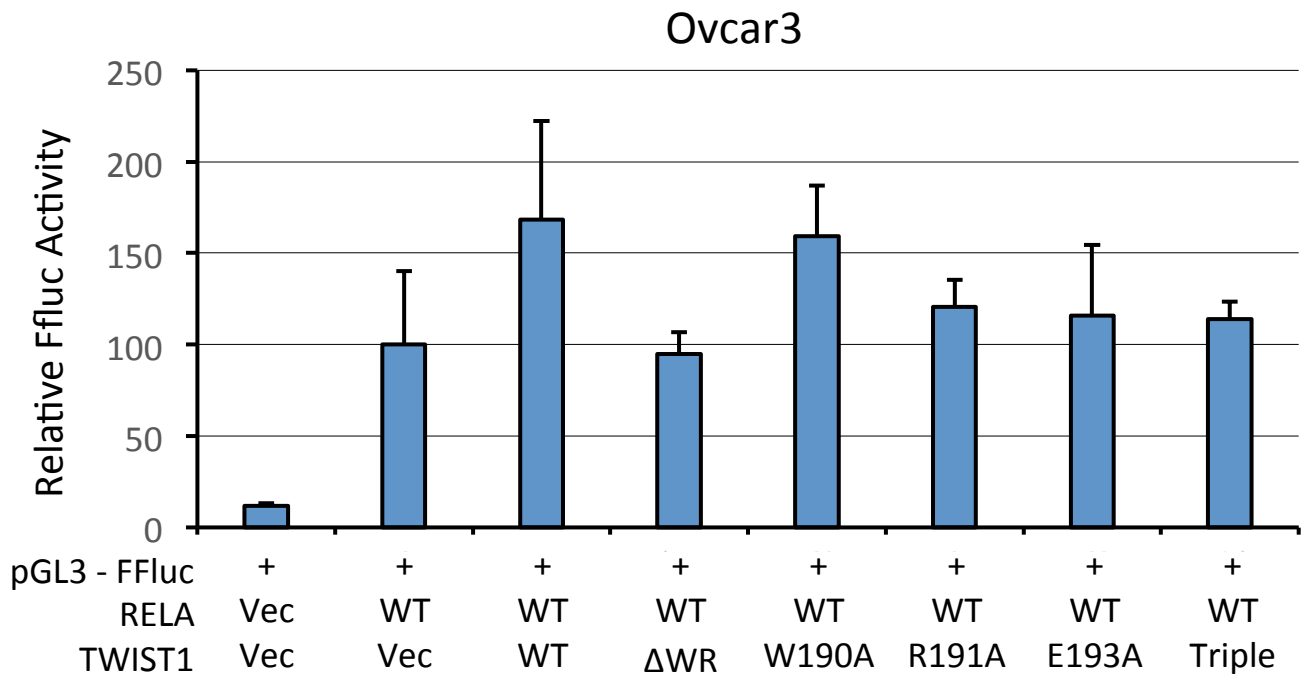


Supplement to:

Disruption of TWIST1-RELA binding by mutation  
and competitive inhibition to validate the  
TWIST1 WR domain as a therapeutic target

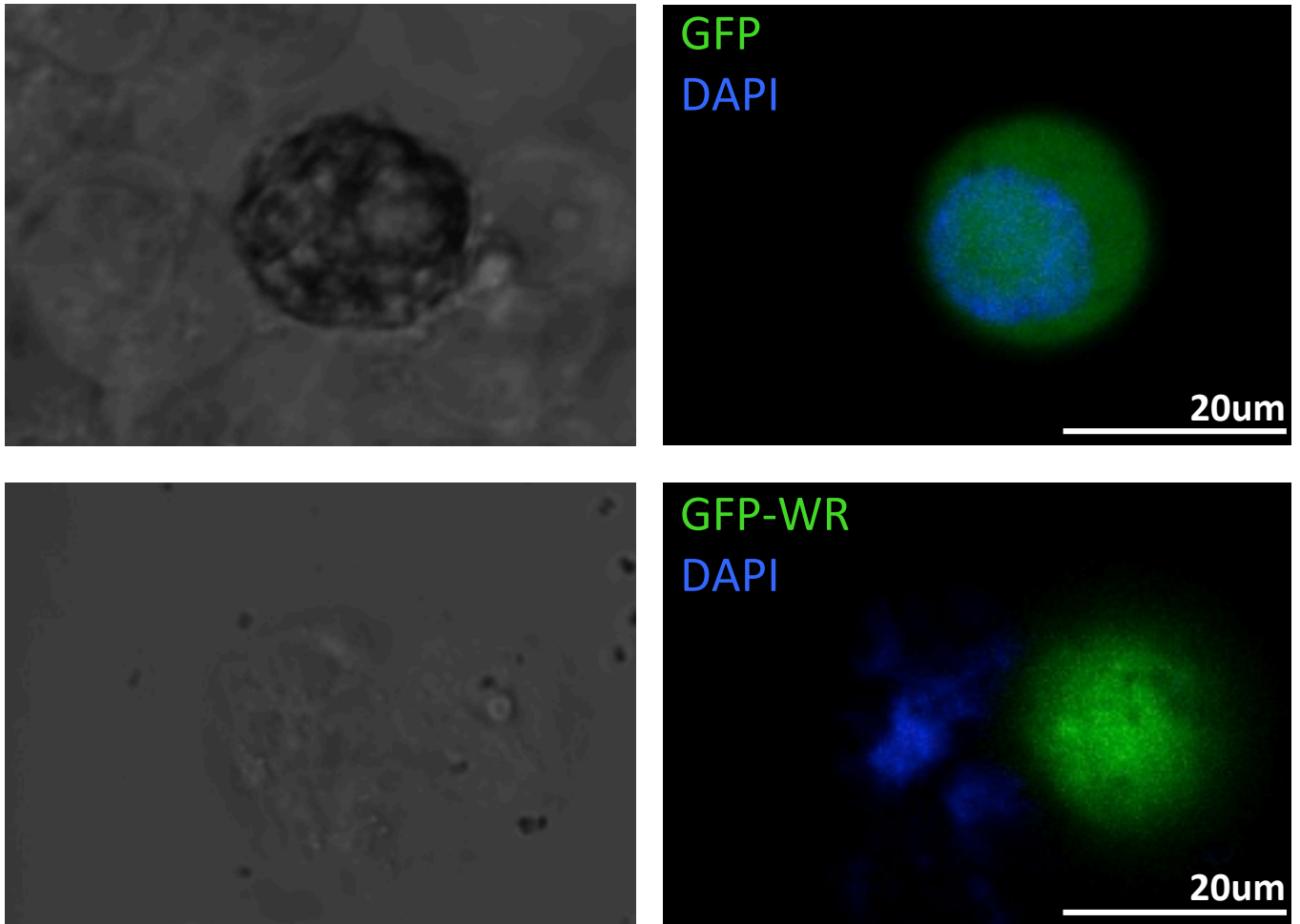
Cai M. Roberts, Sophia A. Shahin, Joana Loeza, Thanh H.  
Dellinger, John C. Williams, and Carlotta A. Glackin

**Figure S1**



**Figure S1.** TWIST1 mutation decreases IL-8 promoter activity in Ovcar3 cells. Replicating the experiment shown for Ovcar4 in Figure 2 shows a similar trend in the Ovcar3 cell line. As Ovcar3 showed a smaller degree of induction with TWIST1 expression, Ovcar4 was used as the cell line of choice for remaining functional assays.

**Figure S2**



**Figure S2.** Confocal images of GFP allele localization. GFP lacking the WR domain is visible throughout the cell, including the nucleus, as indicated by DAPI staining. GFP-WR signal appears distinct from DAPI-positive nuclei.