

Figure S1

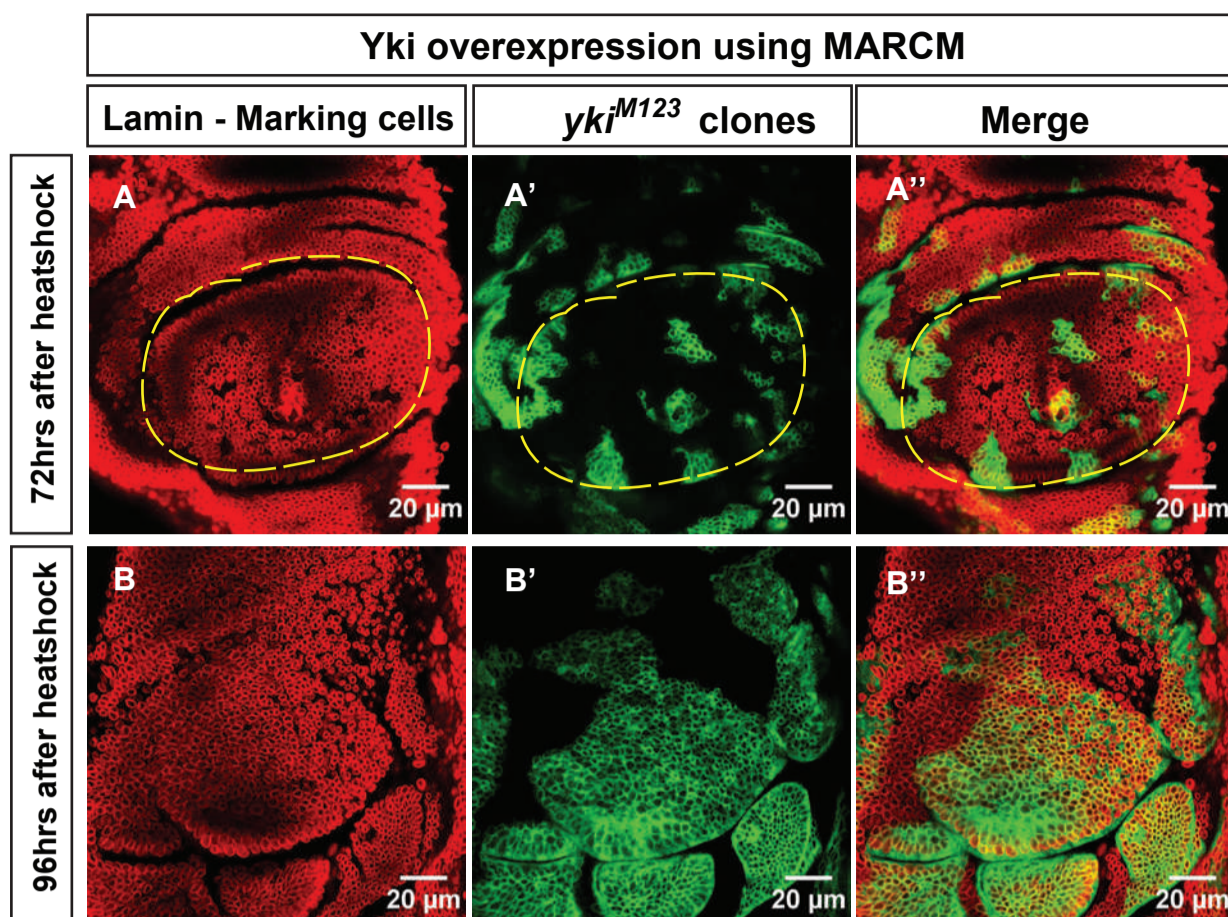


Figure S2

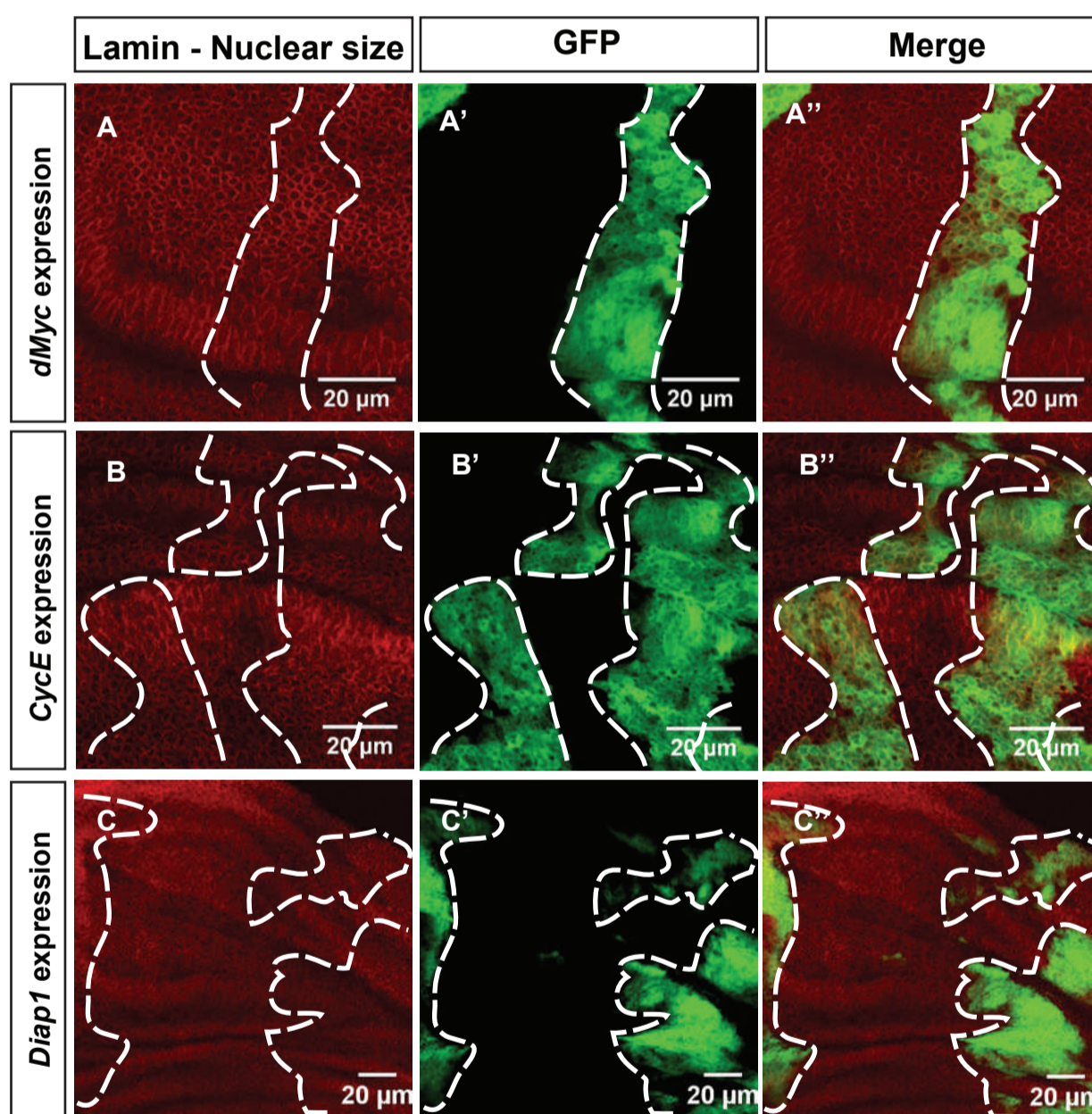


Table S1

Binding events of Sd on *CycE* sequence and 16.4 kb 5' *CycE* regulatory sequence

| Transcription Factors | Chromosome | Peak Start | Peak End | Putative Target Genes |
|-----------------------|------------|------------|----------|-----------------------|
| Sd | 2L | 15742935 | 15745542 | FBgn0010382 |
| | 2L | 15745543 | 15746281 | FBgn0010382 |
| | 2L | 15746282 | 15746468 | FBgn0010382 |
| | 2L | 15746543 | 15747159 | FBgn0010382 |
| | 2L | 15747160 | 15747546 | FBgn0010382 |
| | 2L | 15747909 | 15748183 | FBgn0010382 |
| | 2L | 15762150 | 15762826 | FBgn0001987 |
| Hth | 2L | 15743536 | 15744084 | FBgn0010382 |
| | 2L | 15746653 | 15747159 | FBgn0010382 |
| | 2L | 15747160 | 15747707 | FBgn0010382 |
| | 2L | 15747947 | 15748221 | FBgn0010382 |

Note:

CycE sequence and 16.4 kb of the 5' *CycE* regulatory sequence: 15727581 - 15764550

FBgn0010382: *Cyclin E*

Figure S3

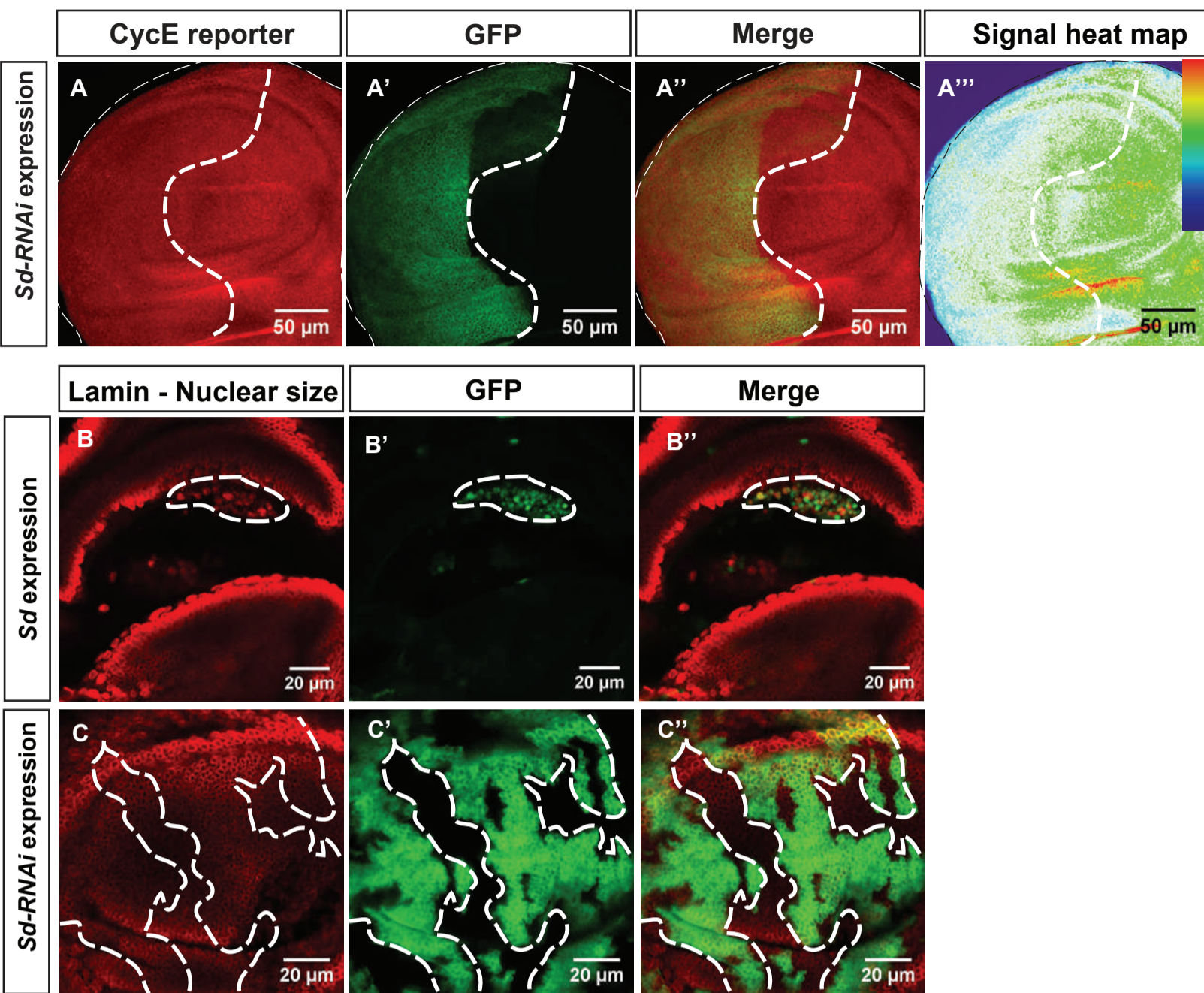
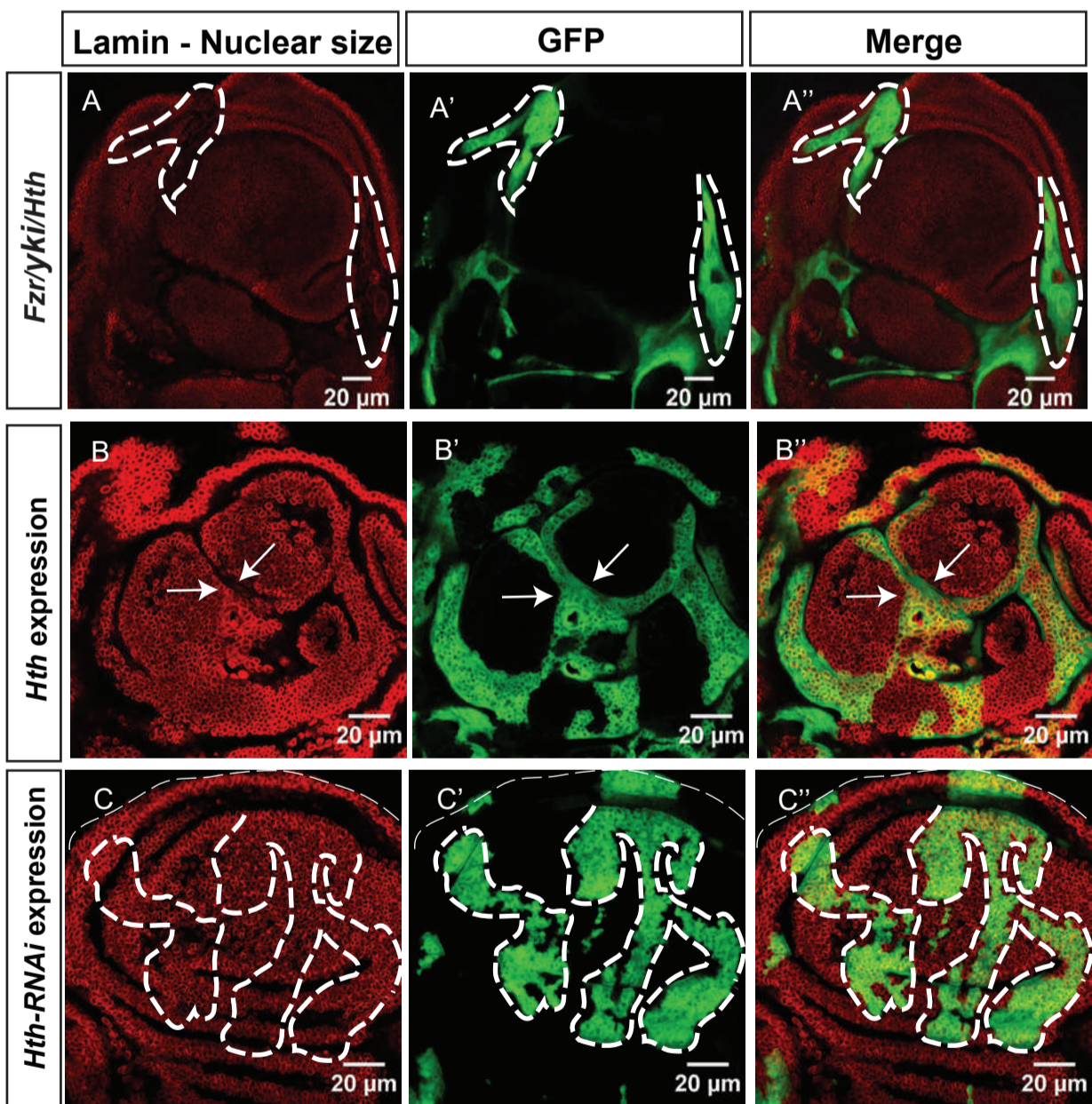
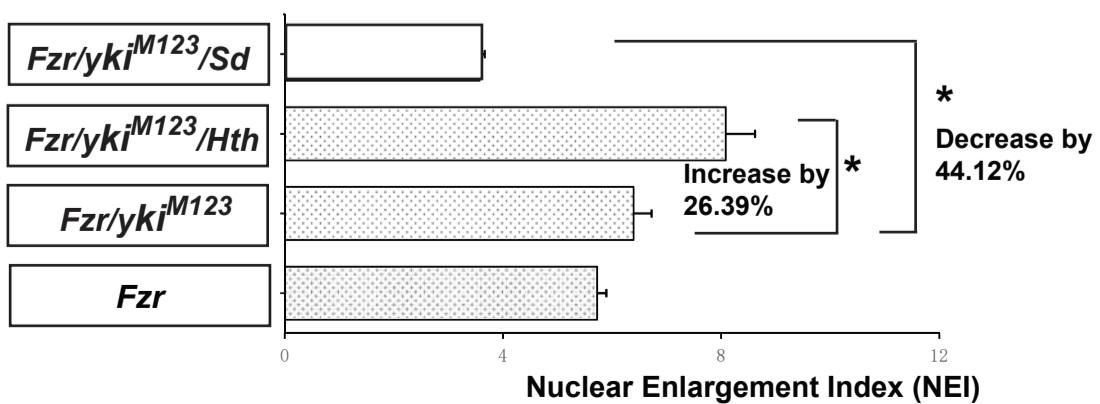


Figure S4



D

Fzr, Yki, and Hth genetic experiments



Key: Hth results Sd results Transgene Nuclear size marker * Significant difference

Figure S5

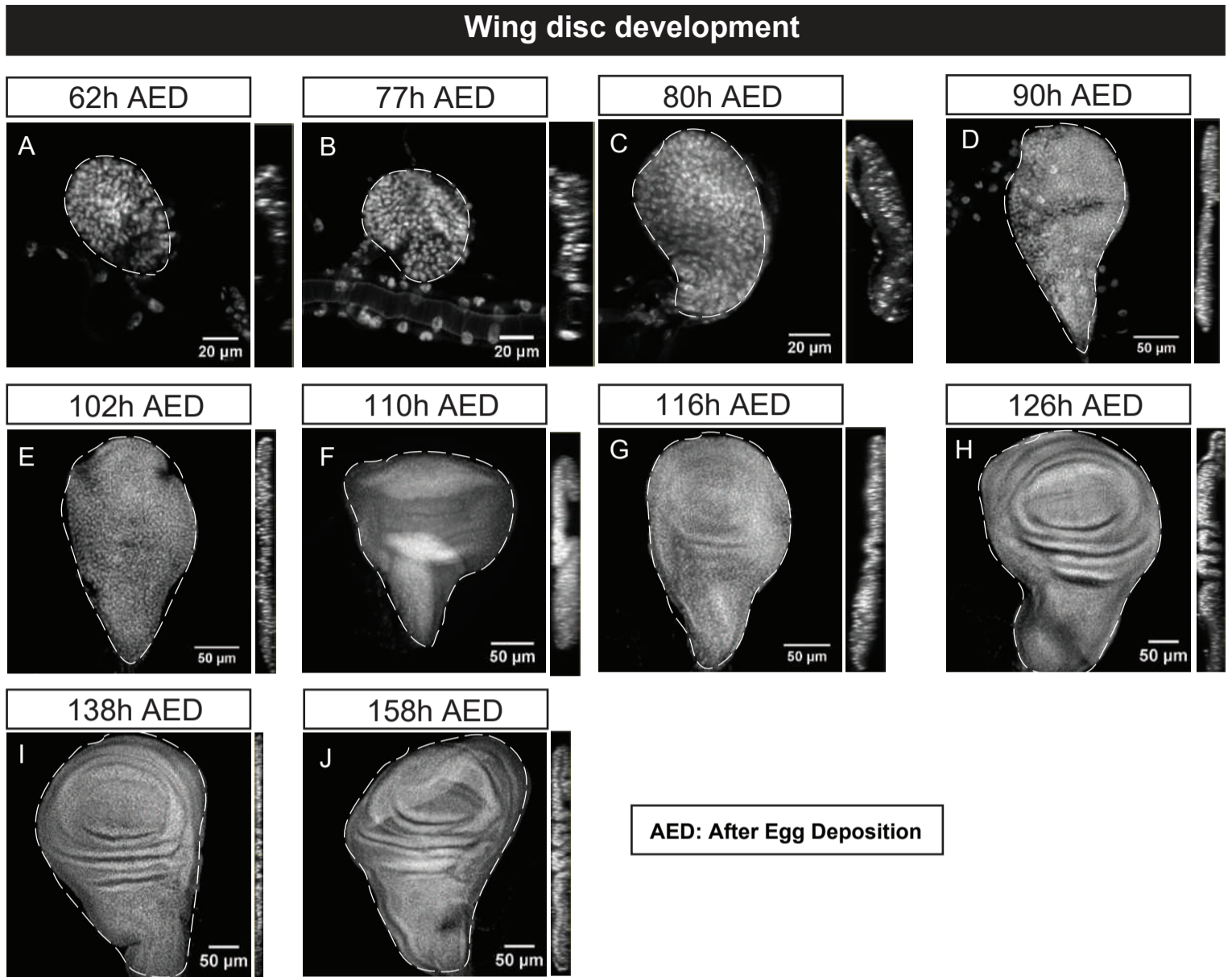


Figure S6

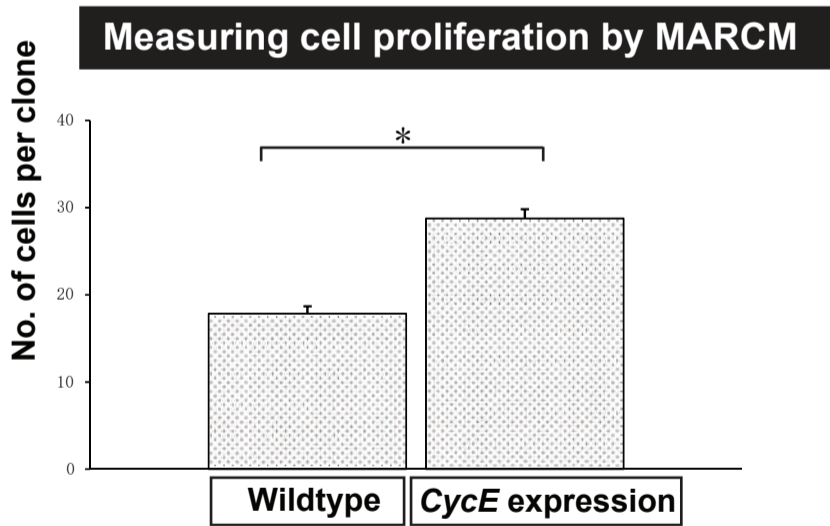


Figure S7

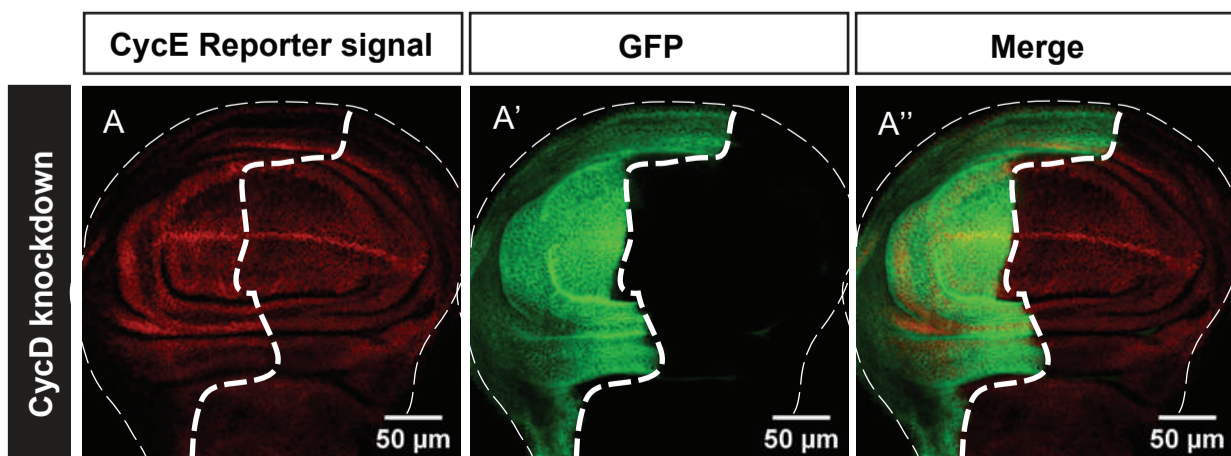


Figure S8

Eye disc experiments

