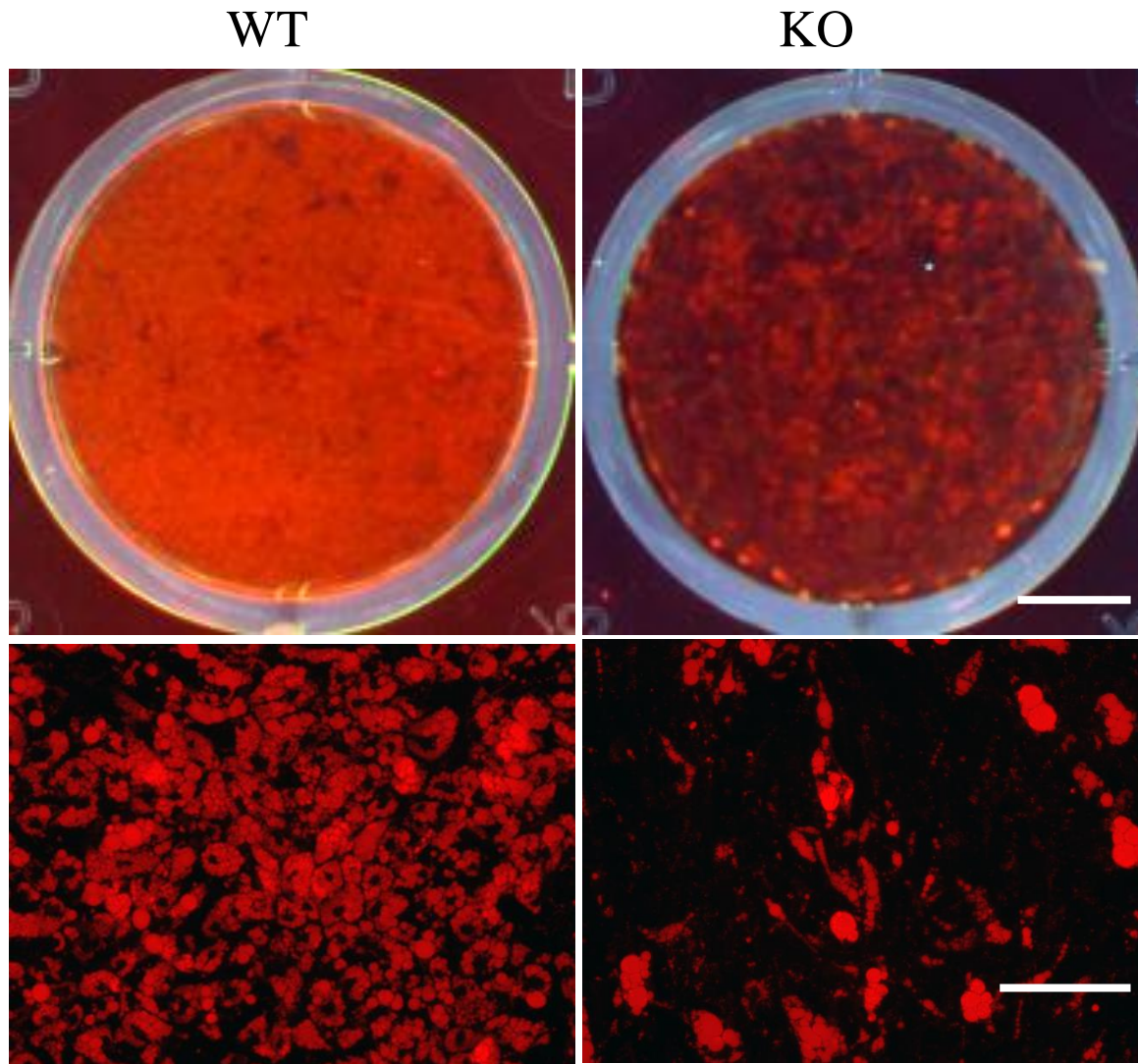
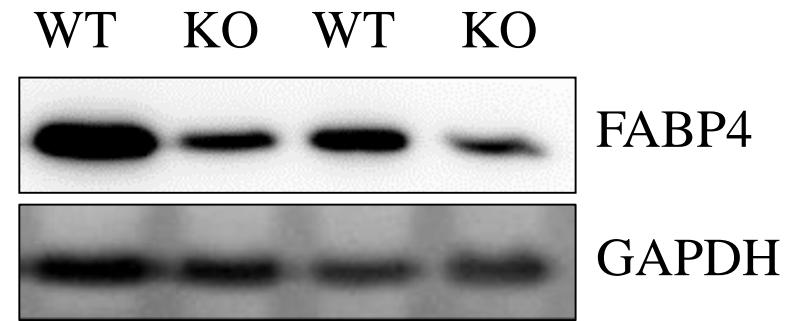
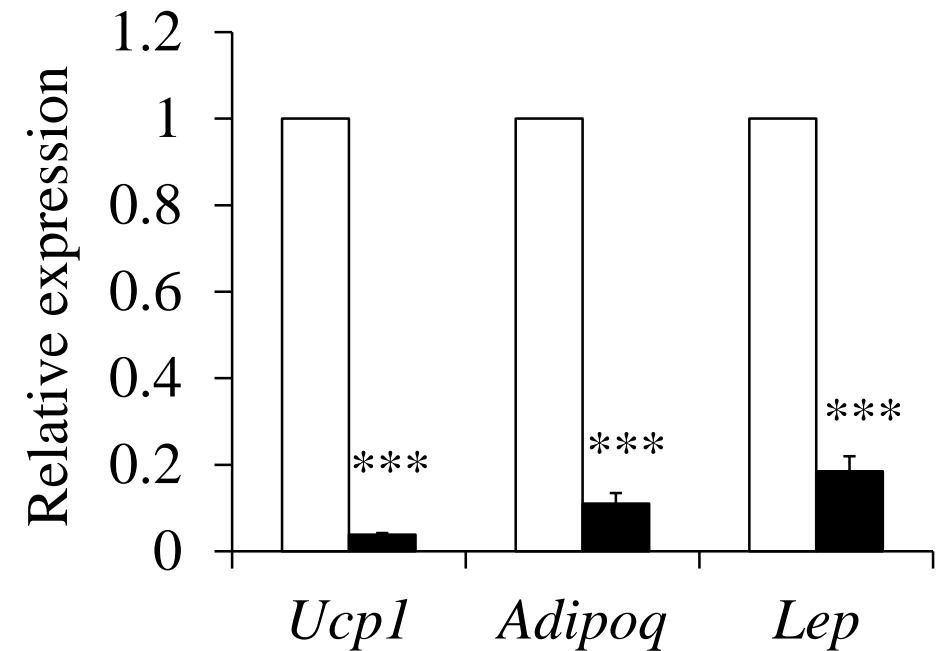


a**b****c**

ESM Fig. 4. Absence of *mTOR* inhibits white adipocytes differentiation. (a) Oil red O staining of WT and KO iWAT cells after differentiation. Scale bars: top one 5 mm, bottom one 100 μ m. (b) The protein levels of FABP4 in WT and KO iWAT cells after differentiation. (c) The mRNA levels of *Ucp1*, *Adipoq* and *Lep* in WT and KO iWAT cells after differentiation (n=9). White bars, WT cells; black bars, KO cells. Error bars represent SEM. *** $p < 0.001$.