

Table S1. Primers used in this study.

Primers used for qRT-PCR (5'-3')	
YY1-F	GAGAACATCCAGGGCATTTA
YY1-R	TGGCAGGCGAAGAGGTAGA
CKB3-F	TCCCTTTTCCTTCACATCTACT
CKB3-R	AACATCTCACTGTTGGAAGCA
CKB4-F	AAGGACAAAGATTCTGTCCCTT
CKB4-R	CAGCAGCTGATTCCACCATC
ABR1-F	GAAGGTAGCGGAGAAGGGA
ABR1-R	CGAGGTTGGTCCCCACTAA
COR15A-F	CTTTCCACAGCGGAGCCA
COR15A-R	CCAATGTATCTGCGGTTTCA
RD29A-F	TCAACACACACCAGCAGCAC
RD29A-R	ATCGGAAGACACGACAGGAA
Actin-F	TTGACTACGAGCAGGAGATGG
Actin-R	CAAACGAGGGCTGGAACAAG

Primers used for vector construction (5'-3')	
YY1-Bifc-F	CGGGATCCATGGATCATCAAATTATC
YY1-Bifc-R	ACGCCTCGAGATCTTCATACTCGGTCTCT
CKB3-Bifc-F	CGGGATCCATGTACAAGGAACGTAGTGGA
CKB3-Bifc-R	ACGCCTCGAGTGGTTTGTGTACCTTGAAG
CKB4-Bifc-F	CGGGATCCATGTACAAGGATCGGAGTGGA
CKB4-Bifc-R	ACGCCTCGAGTTGTTTGTGTGTACCTTAAA
YY1-3301-F	CGGGATCCATGGATCATCAAATTATC
YY1-3301-R	ACGCACGTGCTAATCTTCATACTCGGTC
YY1-P-F	GGGAGCTCTGGGTGAGTGAAGACAATAATGC
YY1-P-R	CGGGATCCTGATTTATTTGGGTAAAGGTGGTT

Figure S1. qRT-PCR analysis of *CKB3* (A) and *CKB4* (B) expression under ABA treatment. 10-day-old seedlings were treated with 100 μ M ABA for the indicated times (0, 3, 6, or 12 h).

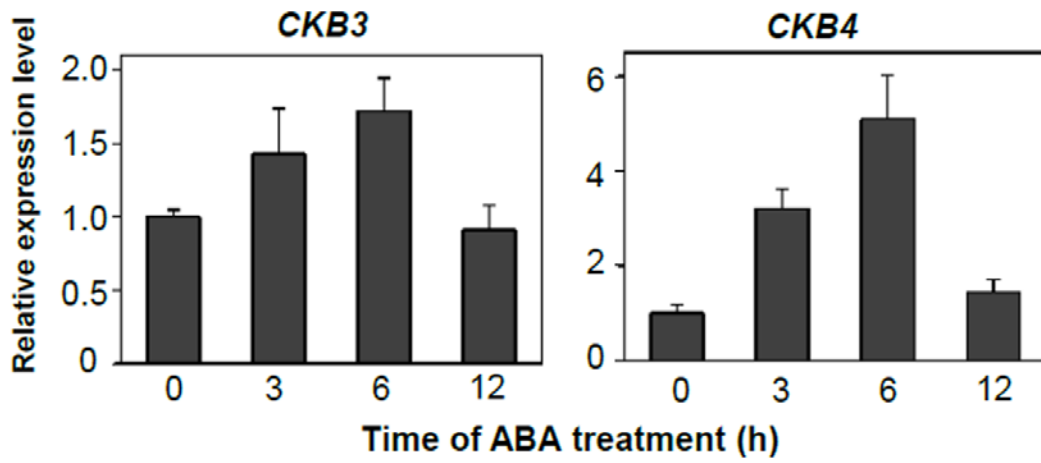
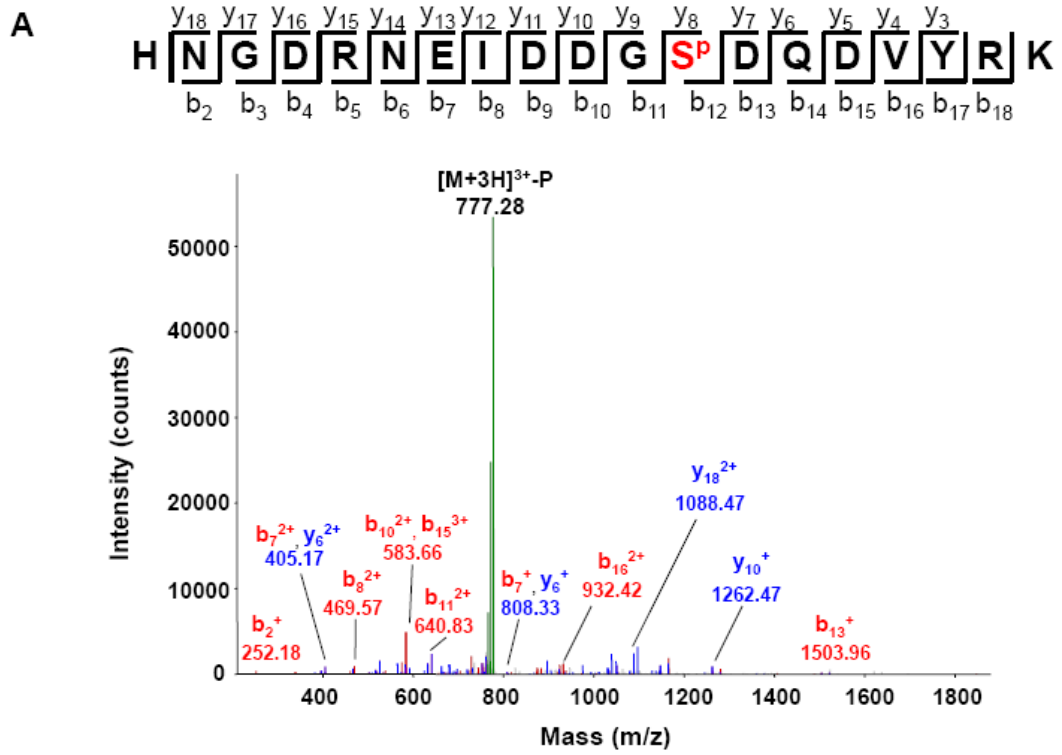
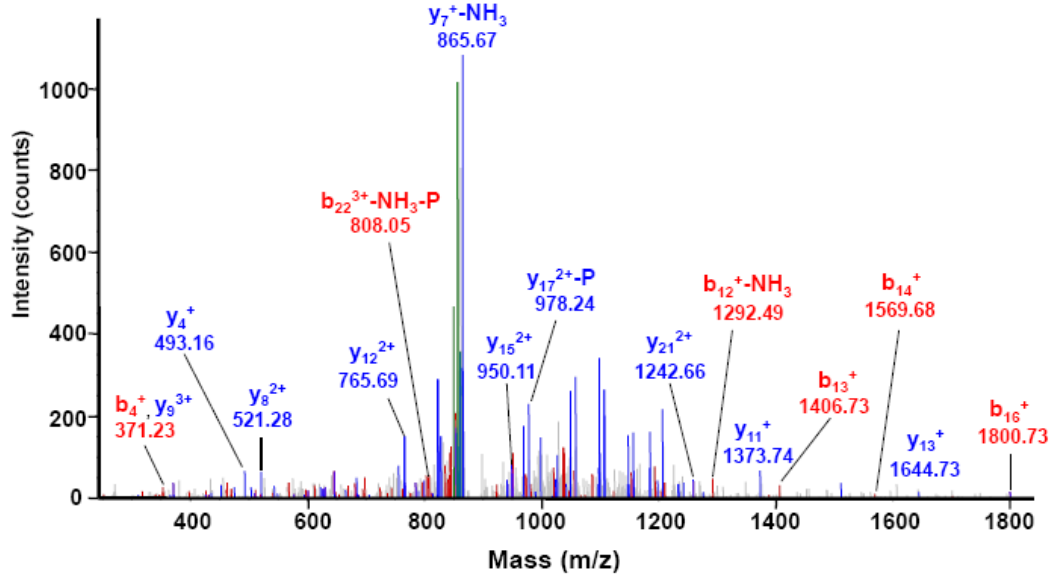
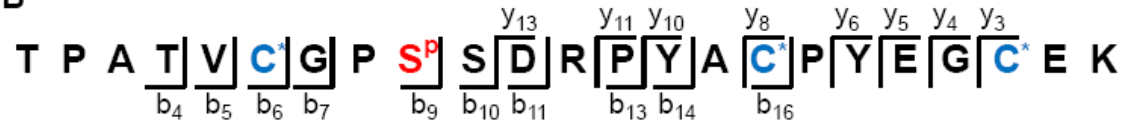


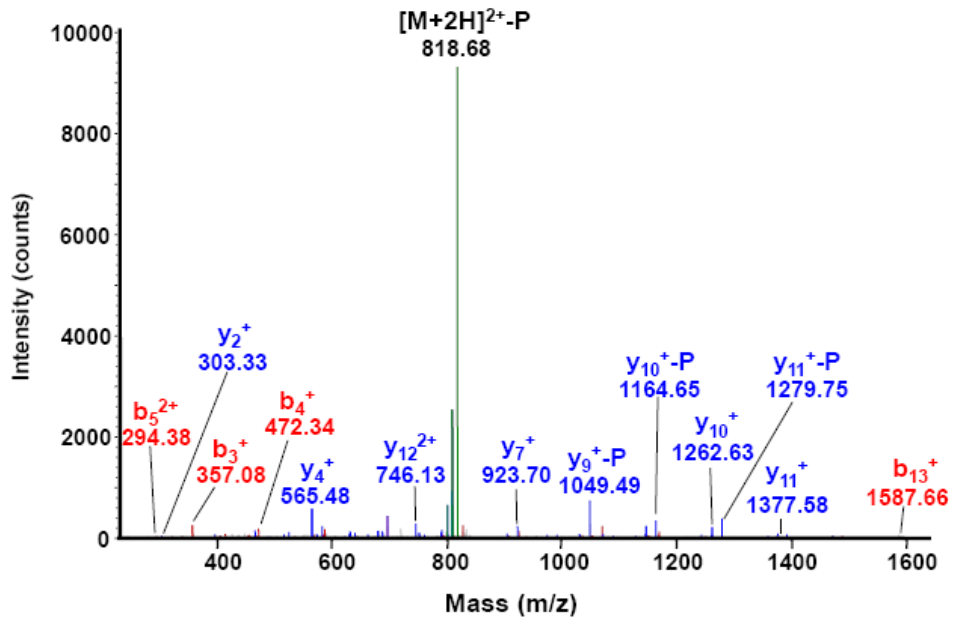
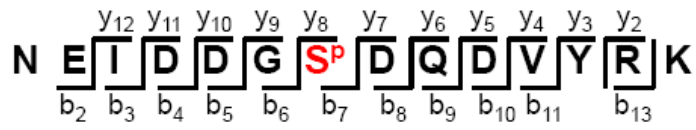
Figure S2. Five phosphorylated AtYY1 peptides were identified using LC-MS/MS after an *in vitro* phosphorylation assay with CKII. The amino acids labeled with a P indicate that the sites are phosphorylated. The fragment ions assigned to both y-ions and b-ions are labeled.



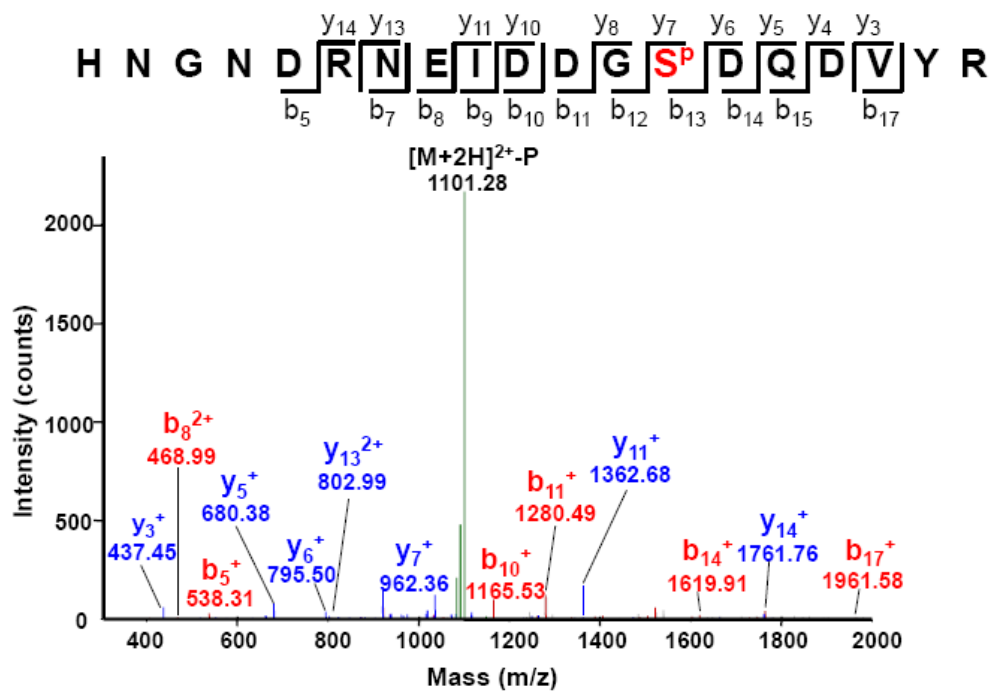
B



C



D



E

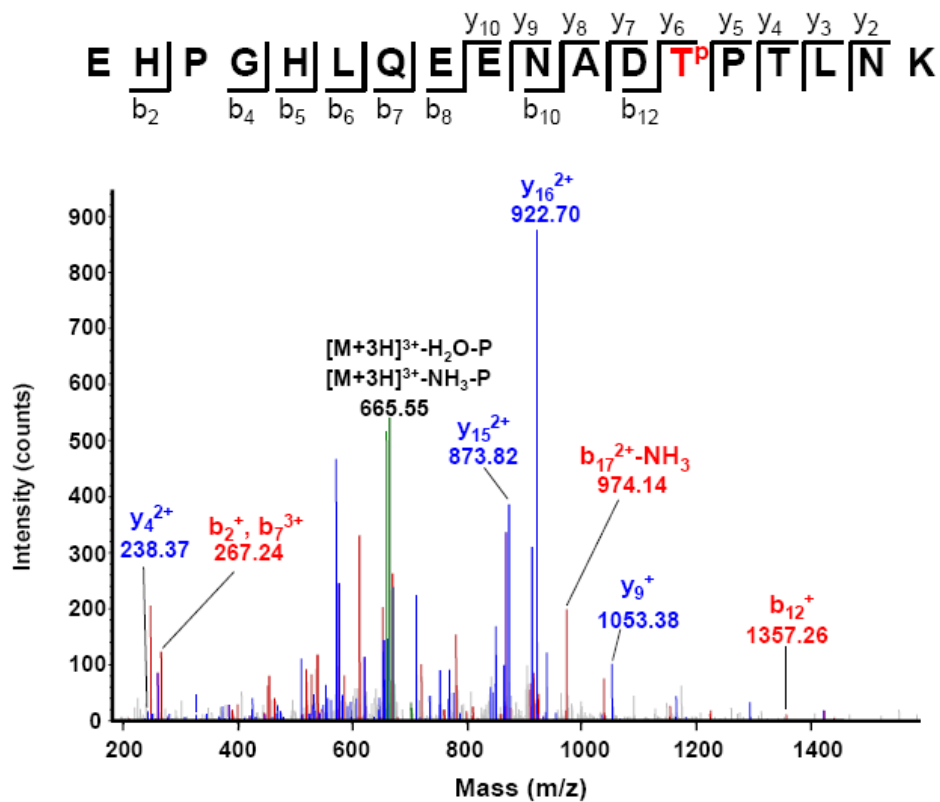


Figure S3. qRT-PCR analysis of *AtYY1* expression in the seedlings of WT, *pAtYY1::S284D*, *pAtYY1::S284A* and *pAtYY1::AtYY1* plants in control conditions.

