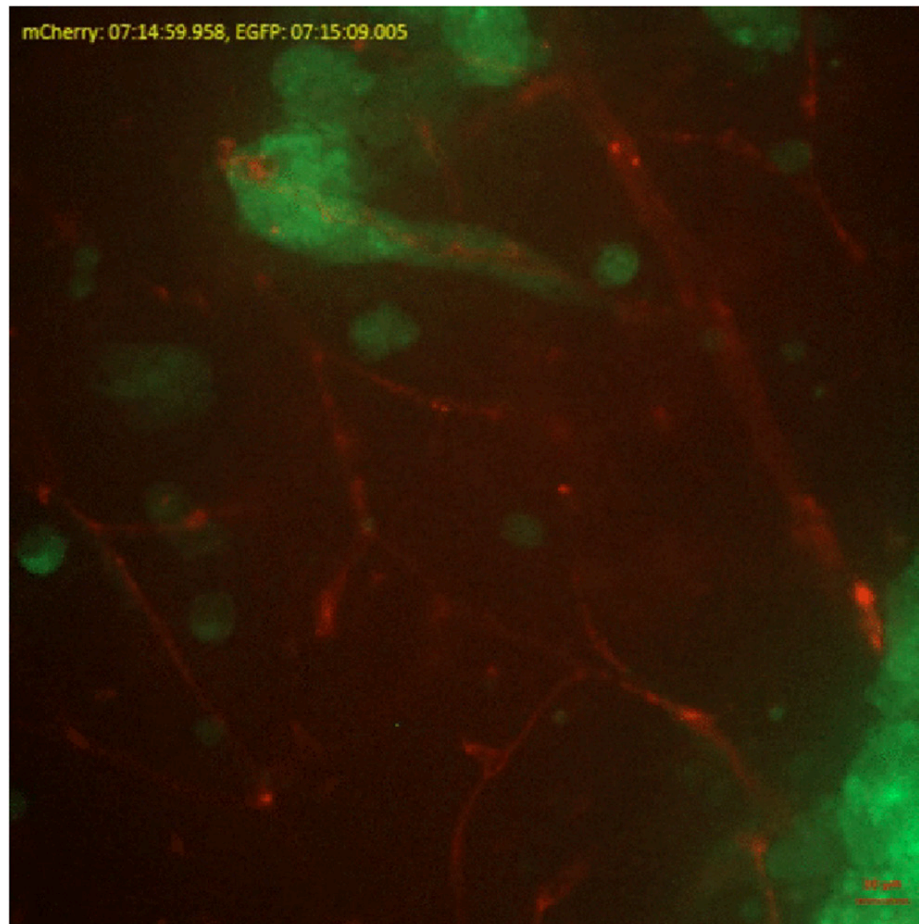


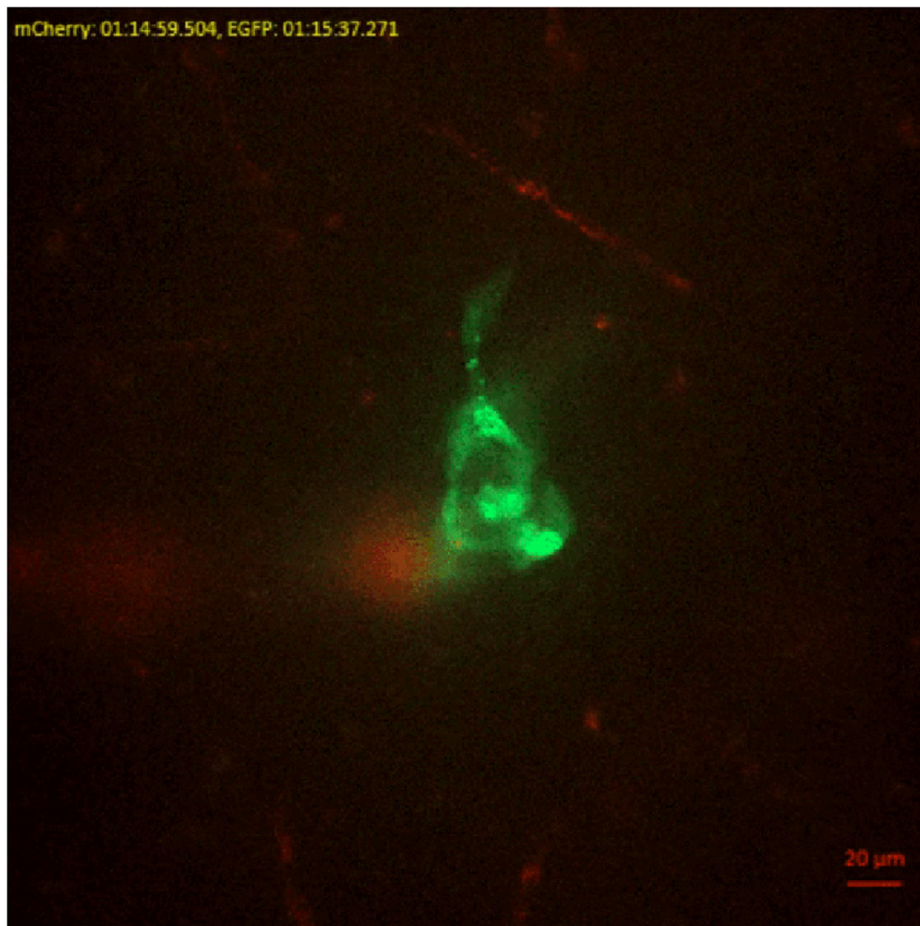
GBM heterogeneity as a function of variable epidermal growth factor receptor variant III activity

SUPPLEMENTARY VIDEOS



See Supplementary Video 1

Supplementary Video S1: Ex vivo slice invasion of pEGFR-Hi cells. ZsGreen-expressing pEGFR-Hi cells invading along lectin IB4-labeled vasculature in multicellular groups. Duration of acquisition: 5 hours. Scale bar = 20 μ m.



See Supplementary Video 2

Supplementary Video S2: Ex vivo slice invasion of pEGFR-Lo cells. ZsGreen-expressing pEGFR-Lo cells invading along lectin IB4-labeled vasculature as single cells. Duration of acquisition: 6.5 hours. Scale bar = 20μm.