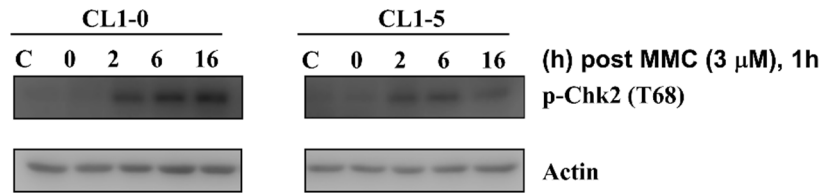
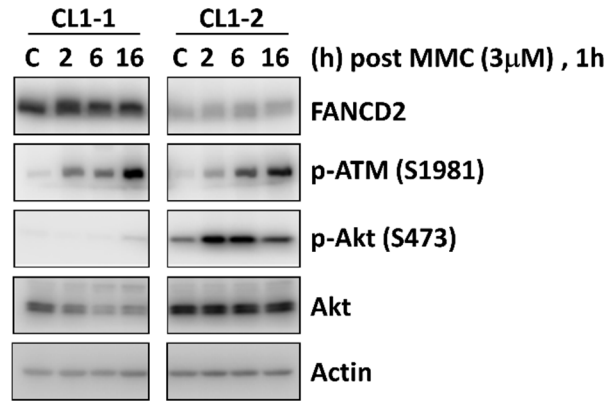


Mitomycin C treatment induces resistance and enhanced migration via phosphorylated Akt in aggressive lung cancer cells

SUPPLEMENTARY FIGURES



Supplementary Figure S1: Immunoblot analysis of p-Chk2 (T68) in CL1-0 and CL1-5 cells at the indicated time points post 3 μM MMC treatment. C: control, cells without MMC treatment. Loading control: actin.



Supplementary Figure S2: Immunoblot analysis of FANCD2, p-ATM (S1981), p-Akt (S473), and Akt in CL1-1 and CL1-2 cells at the indicated time points post 3 μ M MMC treatment. Loading control: actin.