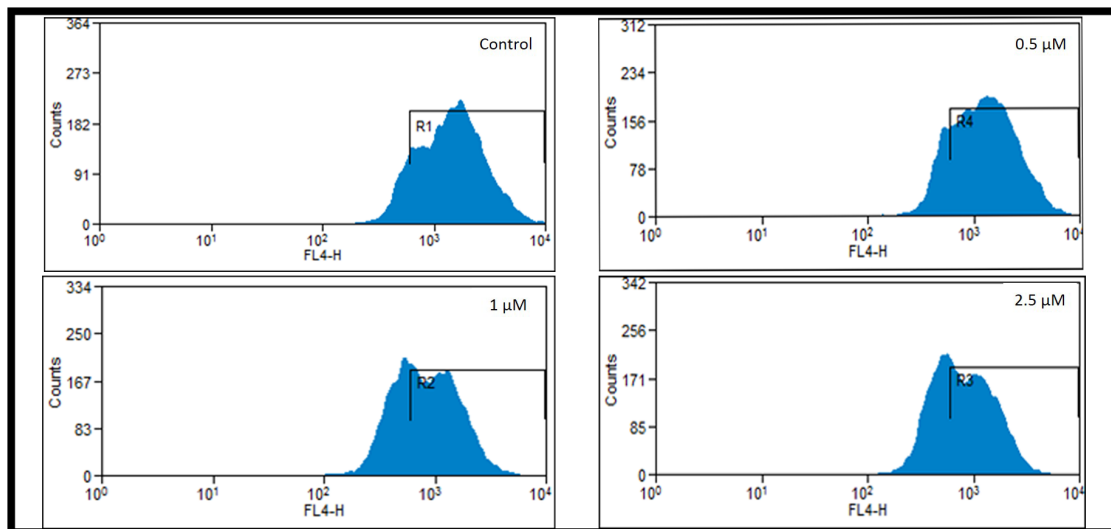
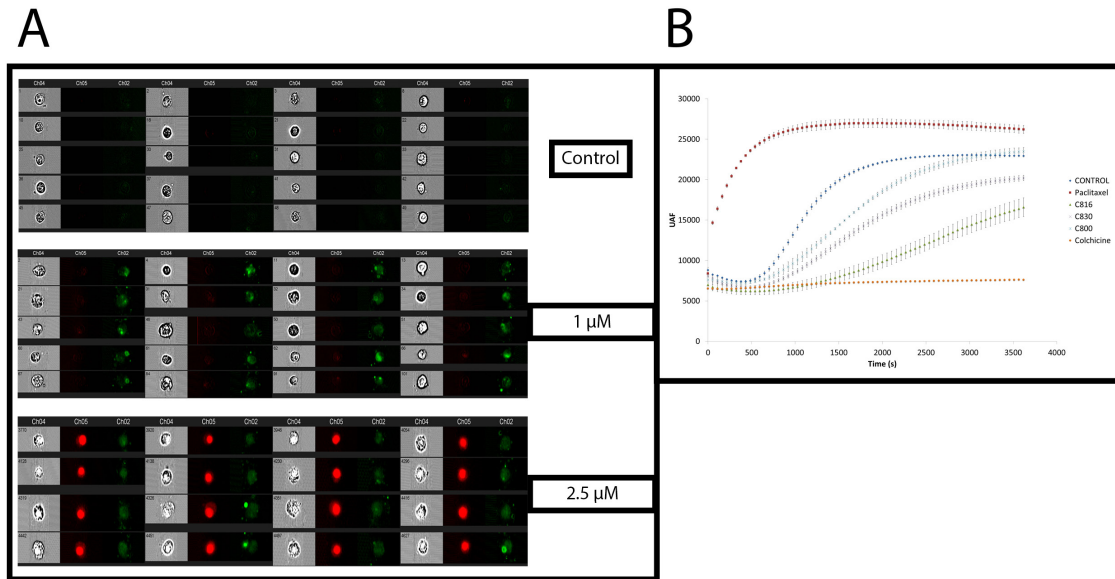


Marine guanidine alkaloids crambescidins inhibit tumor growth and activate intrinsic apoptotic signaling inducing tumor regression in a colorectal carcinoma zebrafish xenograft model

SUPPLEMENTARY FIGURES



Supplementary Figure S1: Quantification of mitochondrial viability of control and 0.5 μM, 1 μM, and 2.5 μM C816-treated cells after 24 h as determined by flow cytometry analysis of Mitotracker[®] Deep Red-stained cells.



Supplementary Figure S2: A. Representative images of control and C816-treated cells (24h) as obtained by flow cytometry analysis using an ImageStream cytometer and Annexin V/IP. **B.** Tubulin polymerization was assayed in the presence of 10 μ M paclitaxel (tubulin polymerization enhancer), 30 μ M colchicine (tubulin polymerization inhibitor), 2.5 μ M C800, 2.5 μ M C830, 1 μ M C816, or vehicle. Polymerization was determined spectrofluorimetrically during 1 h, with a measurement performed every 54 s. AUF: arbitrary fluorescence units.