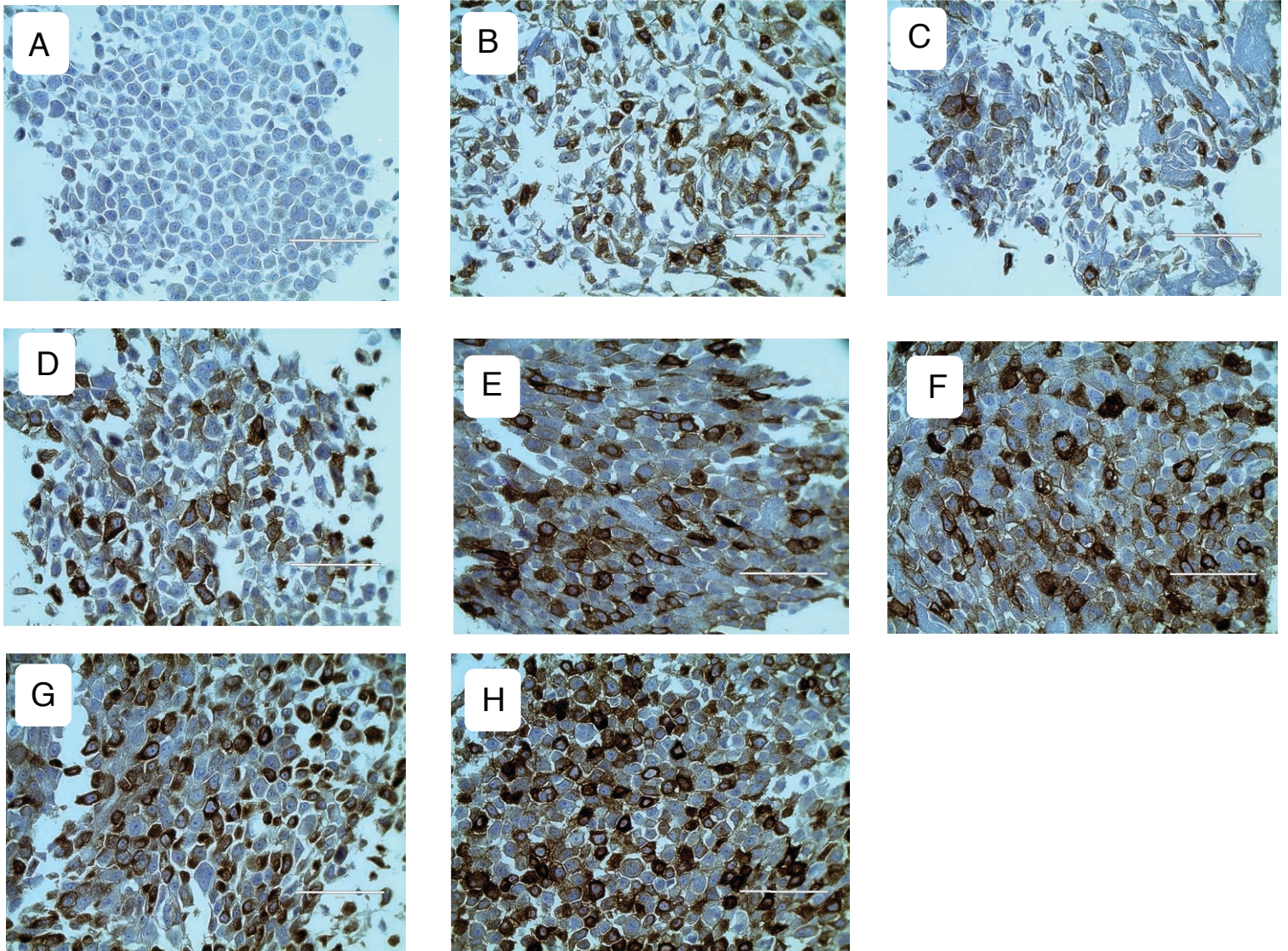
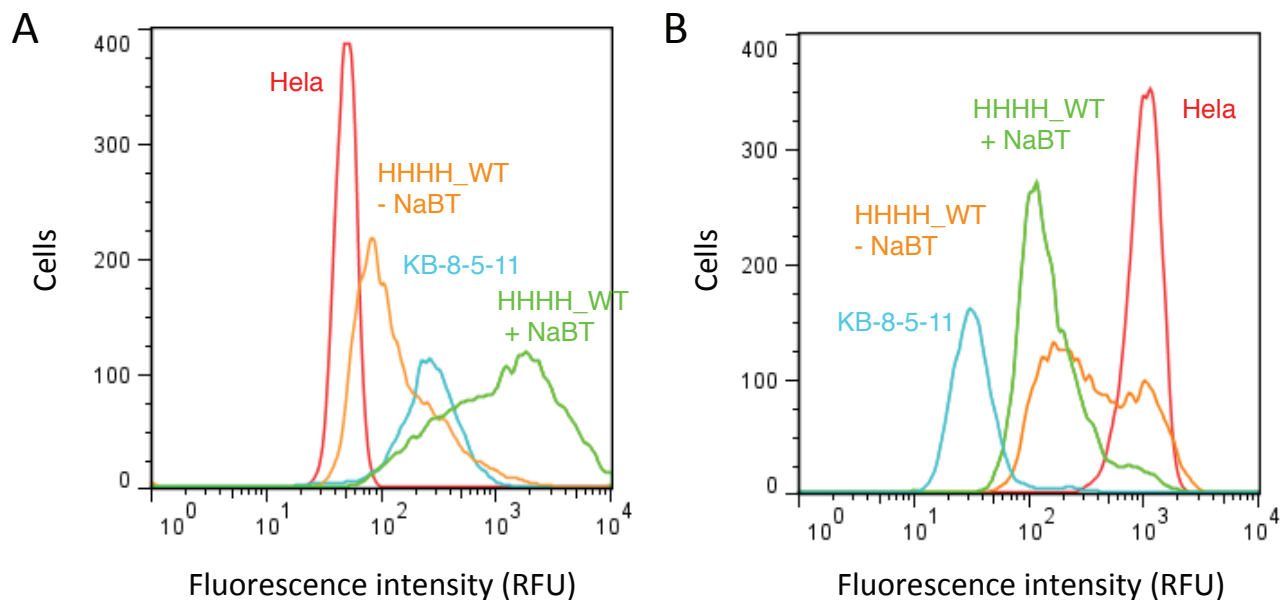


Figure S1



**Figure S1.** Immunohistochemistry of HeLa cells transduced with wild-type and chimeric P-gp. BacMam baculovirus transductions and immunohistochemistry with the anti-P-gp C219 antibody were carried out as described in Experimental Procedures. Images are displayed in the following order: (A) Non-transduced HeLa, (B) HHHH\_WT, (C) HHHH\_Opti, (D) HHHM, (E) HMHH, (F) HMHM, (G) HHMM, (H) MMMM. White bars indicate 100 μm.

Figure S2



**Figure S2.** Cell surface expression and efflux flow cytometry assays with and without the addition of 10 mM NaBT during transduction of HeLa cells with BacMam baculovirus. (A) The human P-gp-specific MRK-16 antibody was used to assess the effect of NaBT on P-gp expression during viral transduction. Viral transduction of HHHH\_WT P-gp was completed in the presence (green) or absence (orange) of 10 mM NaBT and determination of P-gp expression using the MRK-16 antibody was completed as described in Experimental Procedures. Non-transduced HeLa cells (red) and P-gp-expressing KB-8-5-11 cells (cyan) were used as negative and positive controls for P-gp expression, respectively. (B) The transport of the fluorescent P-gp substrate Rh123 was completed in parallel with MRK-16 cell surface expression to determine the efflux capacity of HeLa cells transduced with and without 10 mM NaBT. Histograms shown are representative of three independent experiments.