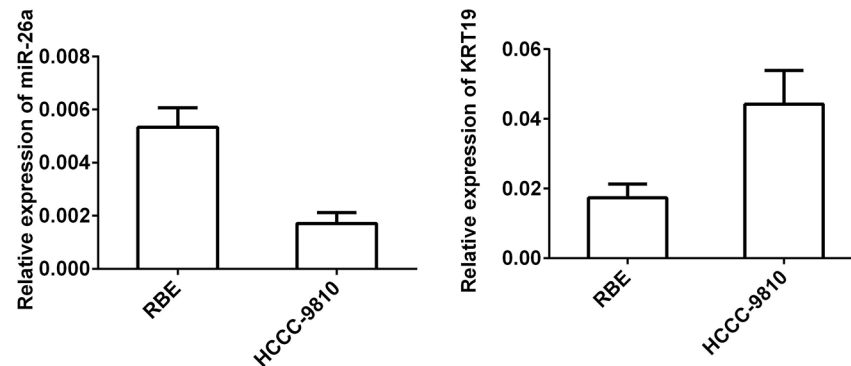
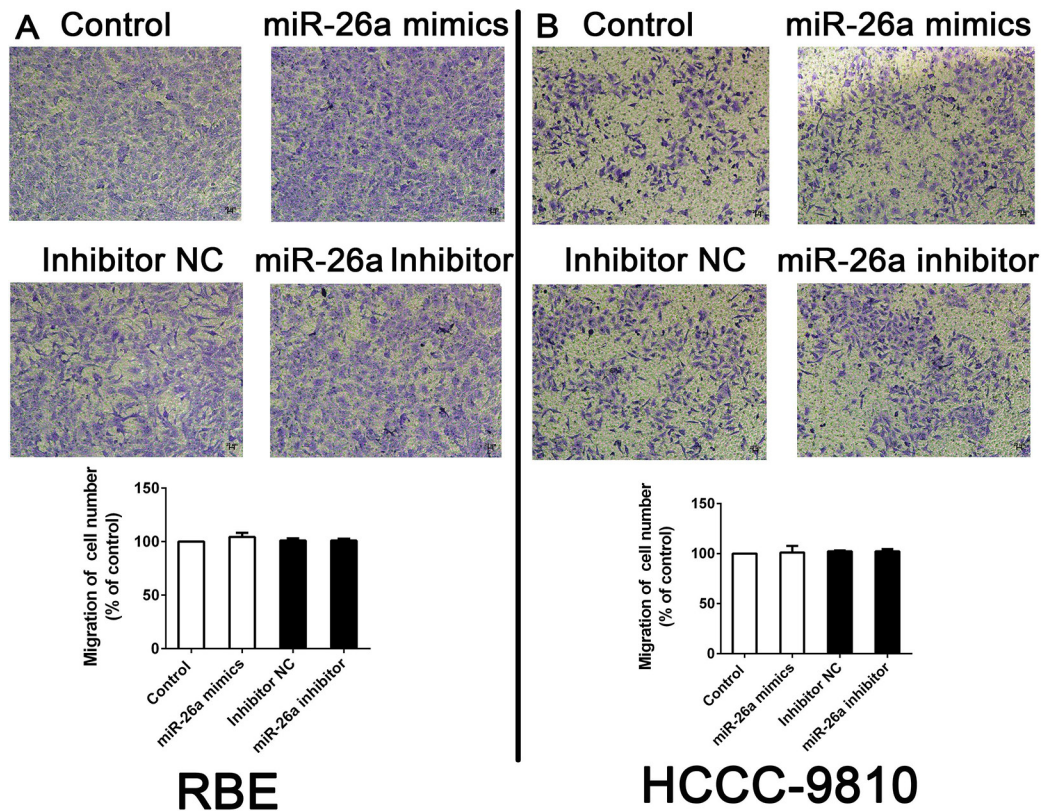


miR-26a induced the suppression of tumor growth of cholangiocarcinoma via KRT19 approach

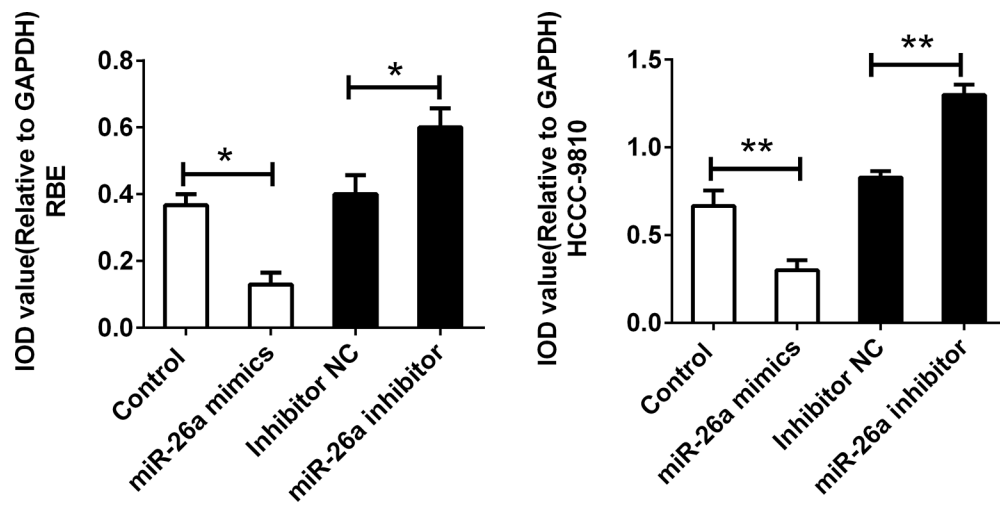
Supplementary Materials



Supplementary Figure S1: Relative expression of miR-26a and KRT19 in human CCA cell lines. (A) Relative expression of miR-26a in human CCA cell lines. (B) Relative expression of KRT19 in human CCA cell lines. Data were presented as the mean \pm SEM.



Supplementary Figure S2: No significant of miR-26a on cell invasion. Cells were treated with shRNA of miR-26a mimics, inhibitor and corresponding controls. The Transwell assay with matrigel was conducted to measure the cell invasion. The migrated cells was normalized with control group. (A) RBE cell line. (B) HCCC-9810 cell line.



Supplementary Figure S3: The integral optical density analysis of western blot. The integral optical density of band detected by western blot was measure and normalized with GAPDH. Data were presented as the mean \pm SEM. *indicates significant difference ($P < 0.05$), **indicates remarkable significant difference ($P < 0.01$).