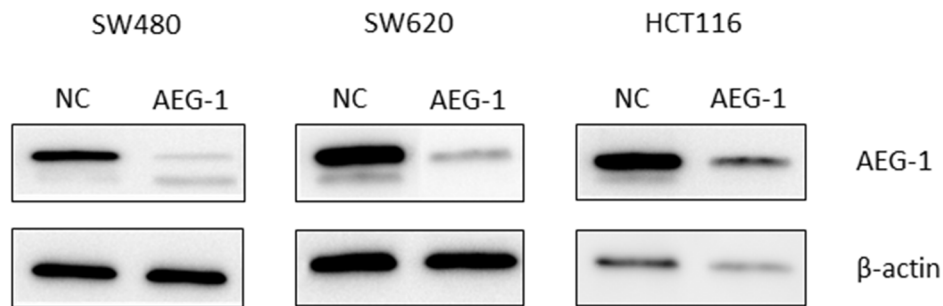


## AEG-1 knockdown in colon cancer cell lines inhibits radiation-enhanced migration and invasion *in vitro* and in a novel *in vivo* zebrafish model

### SUPPLEMENTARY FIGURE



**Supplementary Figure S1: AEG-1 expression in stable knockdown and negative control cell lines.** The AEG-1 protein expression examined by Western blot from stable AEG-1 knockdown and negative control cell lines: SW480, SW620 and HCT116.  $\beta$ -actin was used as a loading control. NC: negative control; AEG-1: stable AEG-1 knockdown.