

### Figure S1: Interaction between Bax and Bcl-xL

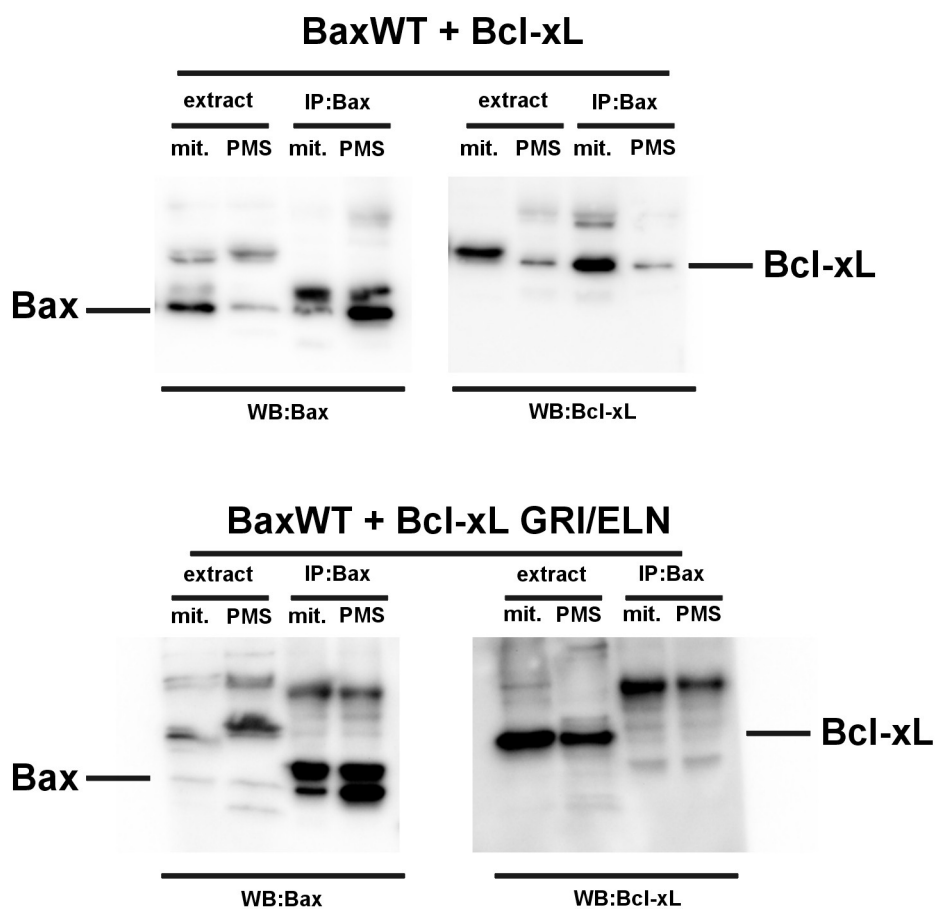
Experiments were done on mitochondria and S30 fractions from cells expressing Bax mutants with or without Bcl-xL. 2mg proteins of each fraction were immunoprecipitated with an anti-Bax antibody (2D2, Sigma). Typically, 100µg (5%) of the initial fractions were loaded in the 'extract' wells, and 25% of the immunoprecipitated fraction were loaded in the 'IP:Bax' wells. Each experiment has been done at least three times with similar results.

(A) (Top) Wild-type Bax was co-expressed with wild-type Bcl-xL. The IP against Bax showed the interaction with Bcl-xL only in the mitochondrial fraction (IP:Bax; WB: Bcl-xL). (bottom) The absence of signal when BaxWT was co-expressed with Bcl-xL GRI/ELN evidenced the specificity of the signal.

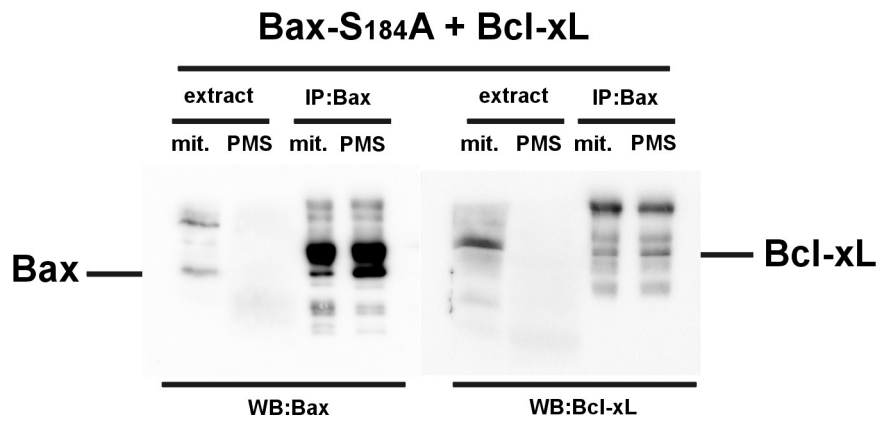
(B) Bax-S184A was co-expressed with wild-type Bcl-xL. The interaction was very weak, and similar in both fractions.

(C) Bax-S184D was co-expressed with wild-type Bcl-xL. Like for BaxWT, the interaction with Bcl-xL occurred mostly in the mitochondrial fraction.

(A)



(B)



(C)

