

Supplementary Information

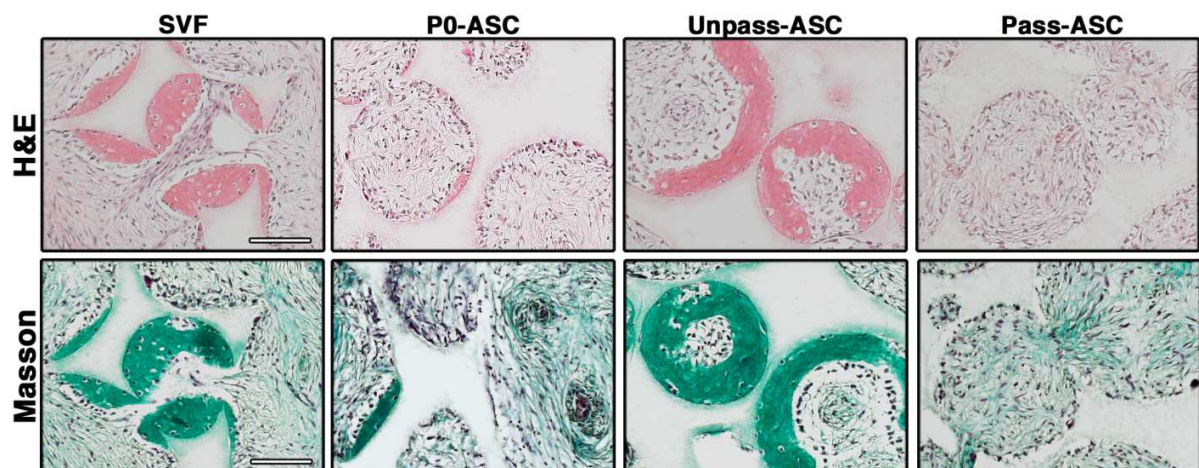
Title

Extracellular matrix and $\alpha_5\beta_1$ integrin signaling control the maintenance of bone formation capacity by human adipose-derived stromal cells

Authors

Nunzia Di Maggio, Elisa Martella, Agne Frismantiene, Therese J Resink, Simone Schreiner, Enrico Lucarelli, Claude Jaquiere, Dirk J Schaefer, Ivan Martin and Arnaud Scherberich

Supplementary Figure 1



Martin I et al. Figure S1

Figure S1. Representative microscopy fields of histological sections of constructs loaded with SVF cells, P0, Unpass- and Pass-ASC, stained with H&E and Masson's trichrome staining. Size bar = 100 μm .