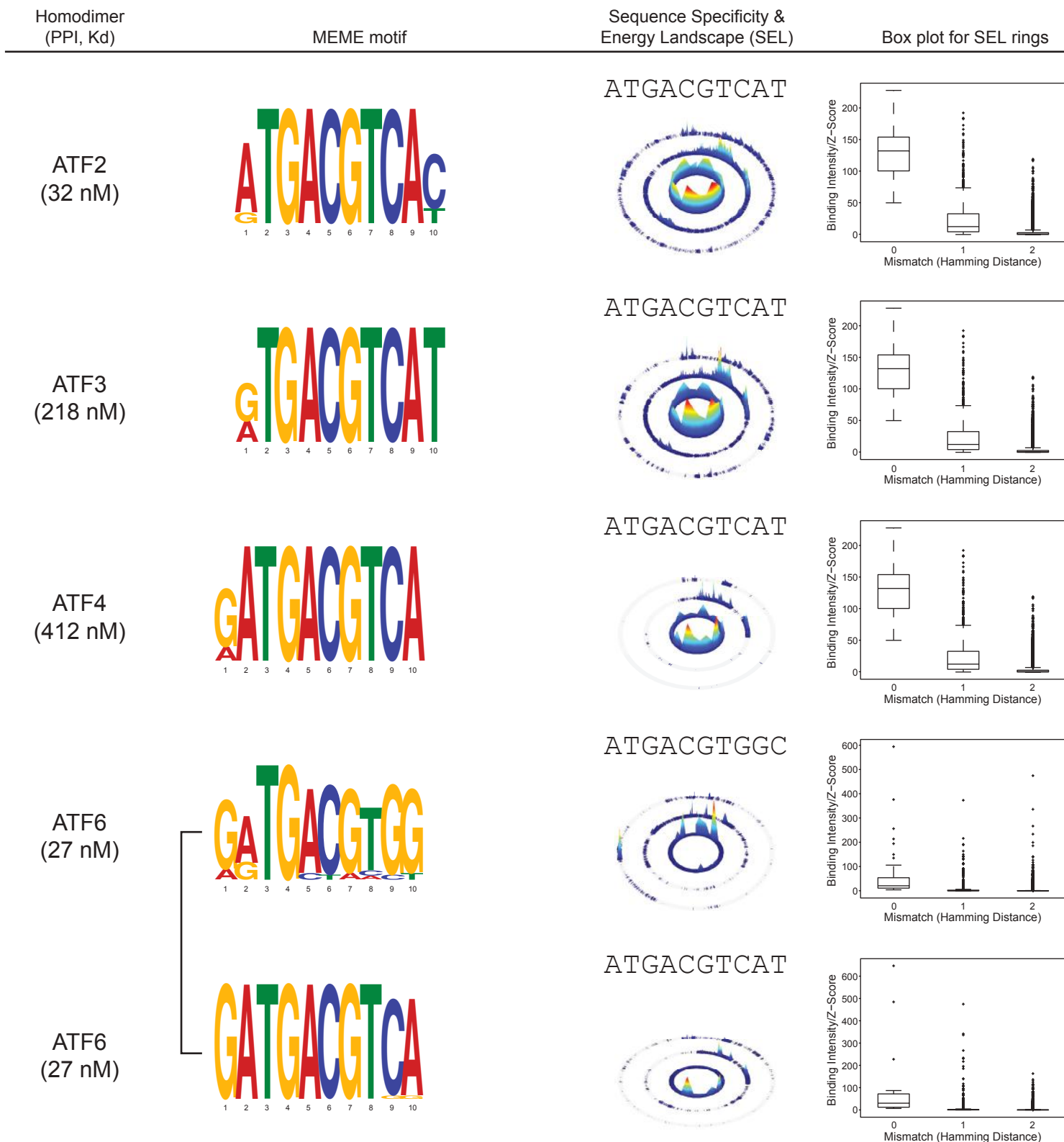


Supplementary file 2. MEME motifs and Sequence Specificity and Energy Landscapes (SEL) for human bZIP homodimers and heterodimers. **column 1**, bZIP dimer and dissociation constant of bZIP dimerization in the absence of DNA, from Reinke et al. (Science, 2013); **column 2**, Representative MEME motifs derived using the top 1,000 12-mer sequences ranked by CSI intensity; **column 3**, SEL displaying CSI intensities of 12-mer sequences in the 0-, 1-, 2- mismatch rings. Seed motifs used to draw SELs are shown on top; **column 4**, Box plot of CSI intensities corresponding to the first three rings (0-, 1-, 2-mismatch rings) of the SEL. bZIP heterodimer motifs were classified as Conjoined (C), Variably-spaced (V), or Emergent (E) based on the DNA binding preferences of the composing bZIPs and a notation of the category included between columns 2 and 3. Multiple MEME motifs were identified for some homodimers and heterodimers. In such cases, motifs are bracketed in column 1.



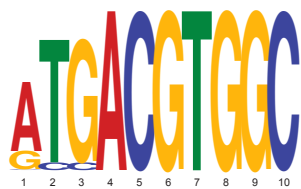
Homodimer
(PPI, Kd)

MEME motif

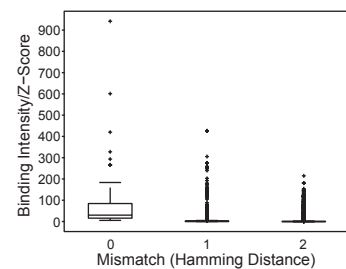
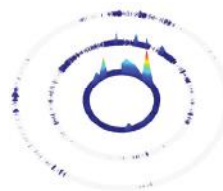
Sequence Specificity &
Energy Landscape (SEL)

Box plot for SEL rings

ATF6B
(<1 nM)



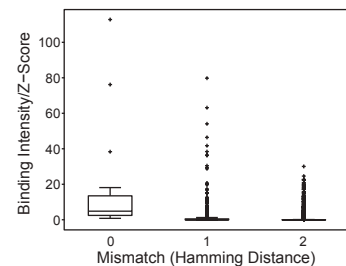
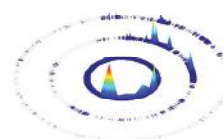
ATGACGTGGC



ATF6B
(<1 nM)



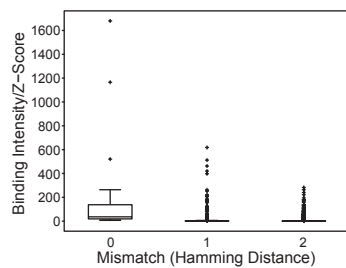
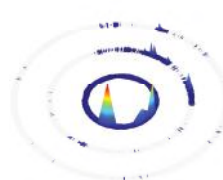
ATGACGTCAc



BATF3
(128 nM)



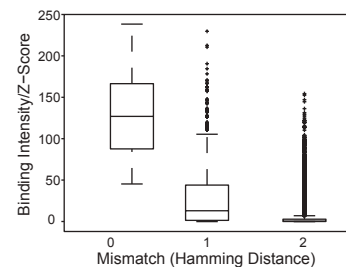
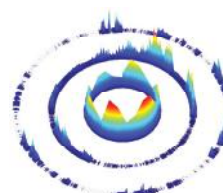
ATGACGTCAc



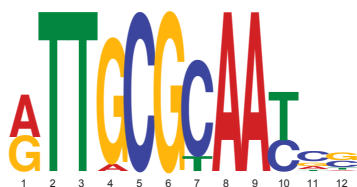
CEBPA
(10 nM)



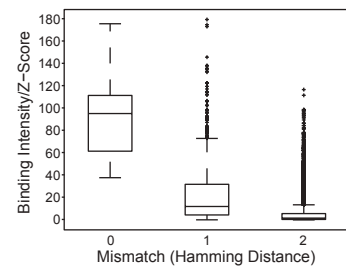
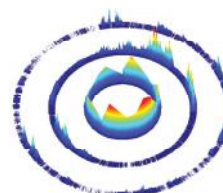
ATTGCGCAAT



CEBPE
(3 nM)



ATTGCGCAAT



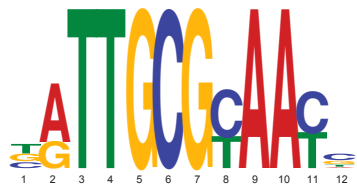
Homodimer
(PPI, Kd)

MEME motif

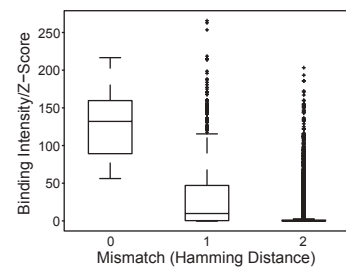
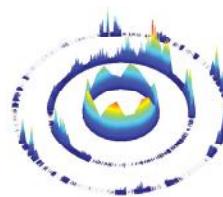
Sequence Specificity &
Energy Landscape (SEL)

Box plot for SEL rings

CEBPG
(<1 nM)



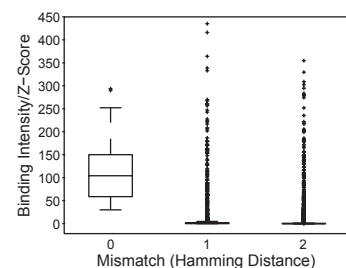
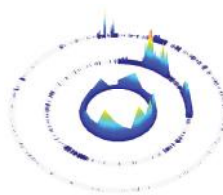
ATTGCGCAAT



CREB1
(15 nM)



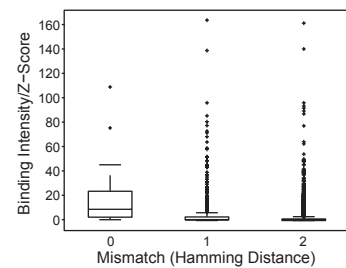
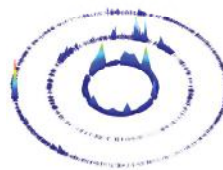
ATGACGTCAT



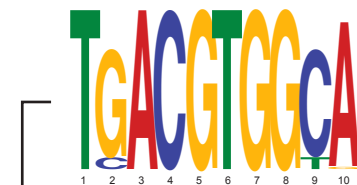
CREB3
(93 nM)



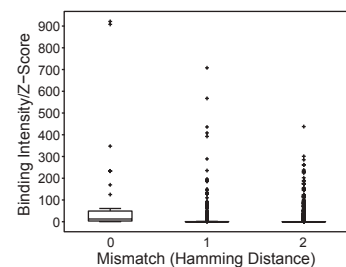
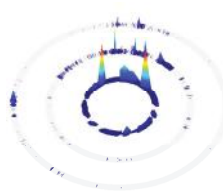
ATGACGTGGC



CREB3L1
(10 nM)



ATGACGTGGC



CREB3L1
(10 nM)



Homodimer
(PPI, Kd)

MEME motif

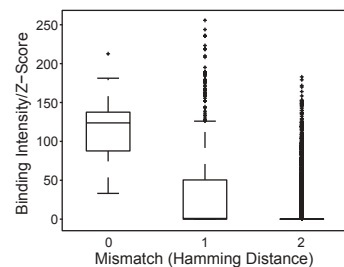
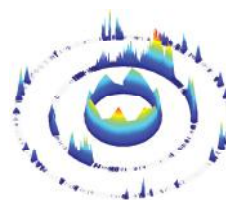
Sequence Specificity &
Energy Landscape (SEL)

Box plot for SEL rings

DBP
(8 nM)



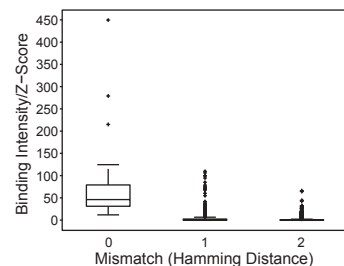
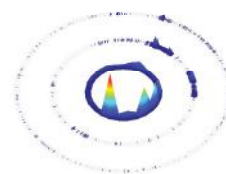
ATTACGTAAT



FOSL1
(>5000 nM)



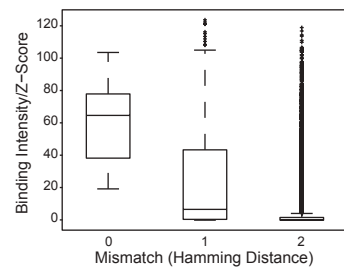
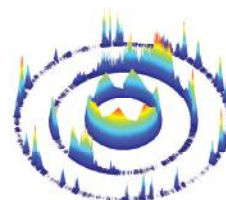
ATGACGTCAT



HLF
(3 nM)



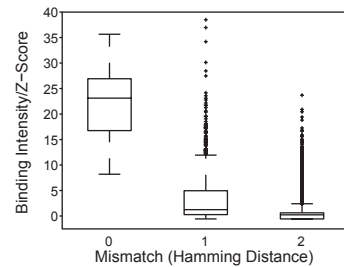
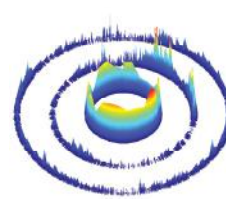
ATTACGTAAT



JUN
(314 nM)



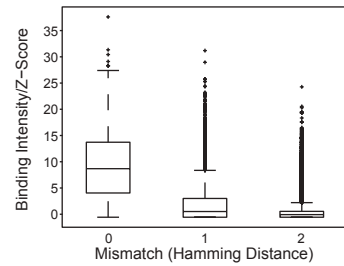
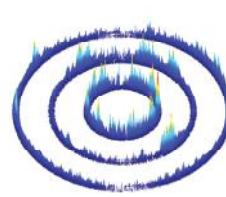
ATGACGTCAT



JUN
(314 nM)



ATGAGTCAT



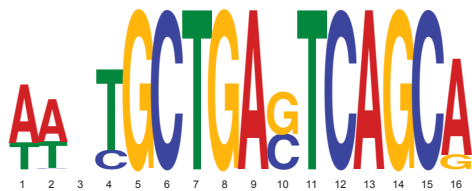
Homodimer
(PPI, Kd)

MEME motif

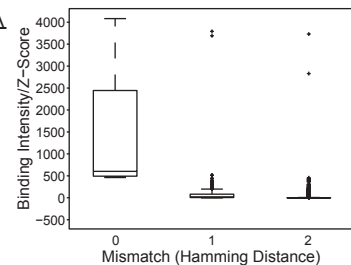
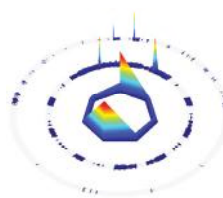
Sequence Specificity &
Energy Landscape (SEL)

Box plot for SEL rings

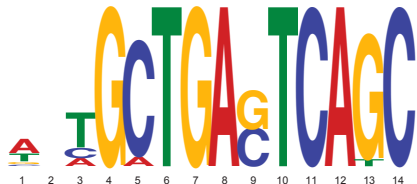
MAFB
(62 nM)



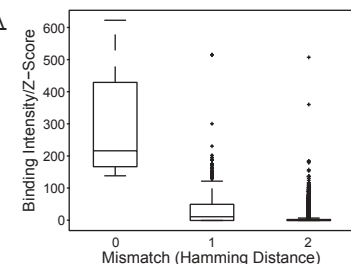
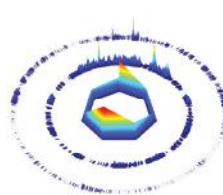
TGCTGAGTCAGCA



MAFG
(15 nM)



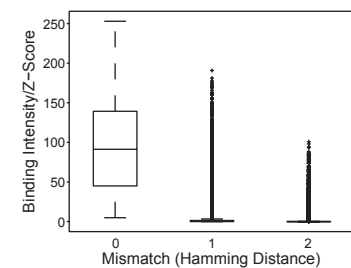
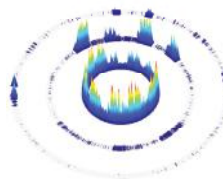
TGCTGAGTCAGCA



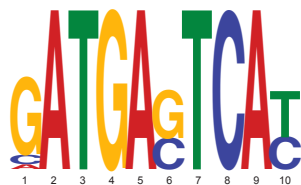
NFE2
(656 nM)



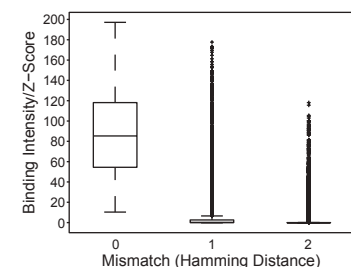
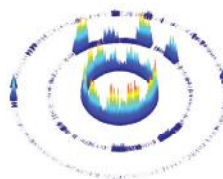
ATGAGTCAT



NFE2L1
(27 nM)



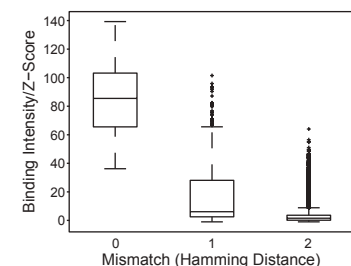
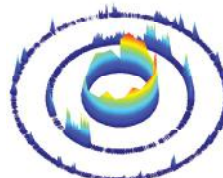
ATGAGTCAT



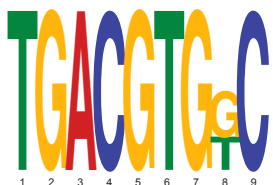
NFIL3
(73 nM)



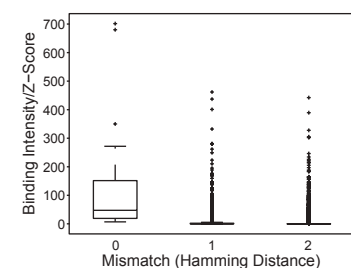
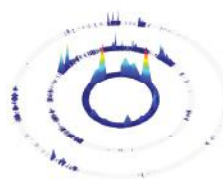
ATTACGTAAT



XBP1
(8 nM)



ATGACGTGGC



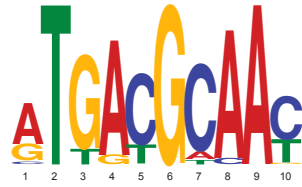
Heterodimer
(PPI, Kd)

MEME motif and classification as
(i) conjoined half-sites (C),
(ii) conjoined half-site with a variable spacer (V), or as
(iii) emergent (E) based on homodimer specificity.

Sequence Specificity &
Energy Landscape (SEL)

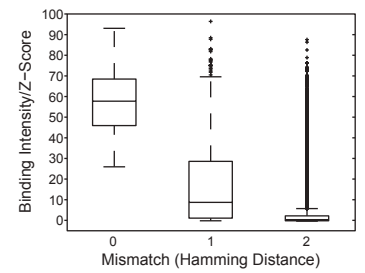
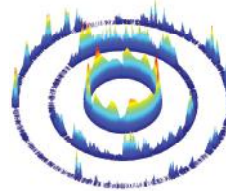
Box plot for SEL rings

ATF3•CEBPA
(13 nM)

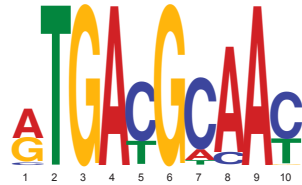


C

ATGACGCAAT

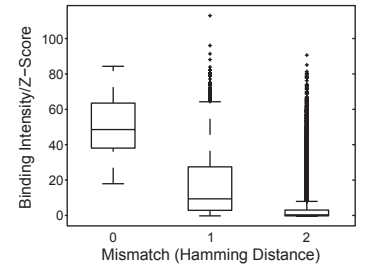
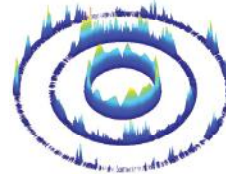


ATF3•CEBPG
(<1 nM)



C

ATGACGCAAT

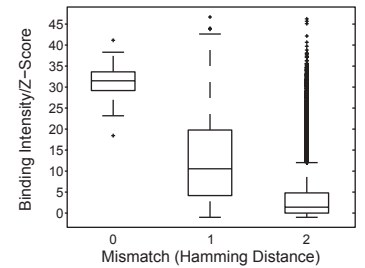
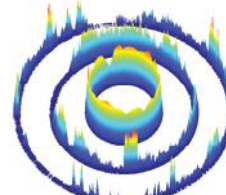


ATF4•CEBPA
(<1 nM)



C

ATGACGCAAT

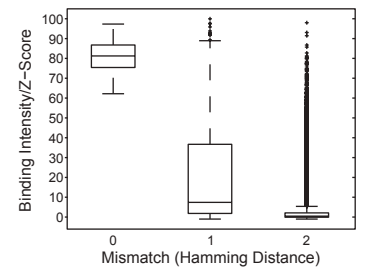
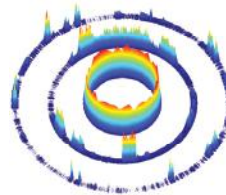


ATF4•CEBPG
(<1 nM)



C

ATGACGCAAT

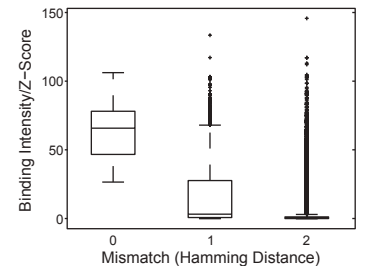
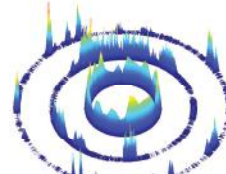


ATF5•CEBPA
(54 nM)

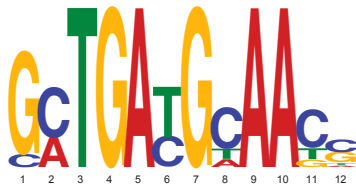


C

ATGACGCAAT

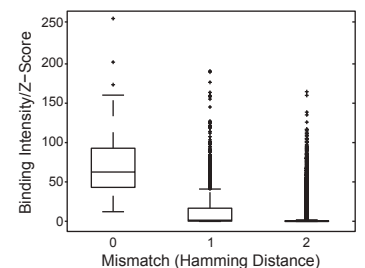
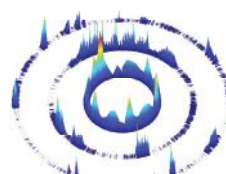


ATF5•CEBPE
(28 nM)



C

CTGATGCAAC



Heterodimer
(PPI, Kd)

MEME motif and classification as
(i) conjoined half-sites (C),
(ii) conjoined half-site with a variable spacer (V), or as
(iii) emergent (E) based on homodimer specificity.

SeqEence Specificity &
Energy Landscape (SEL)

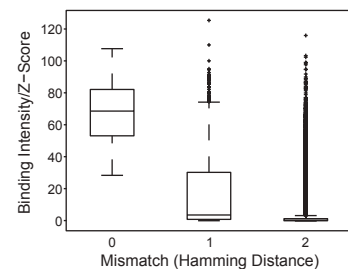
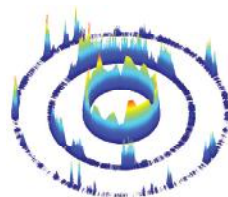
Box plot for SEL rings

ATF5•CEBPG
(<1 nM)



C

ATGACGCAAT

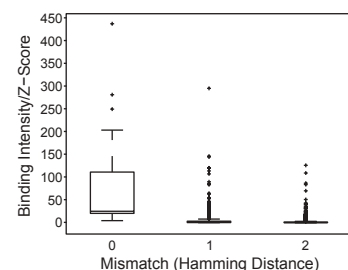
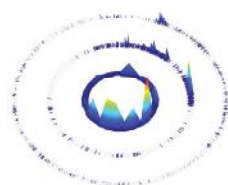


ATF5•ATF6B
(>5000 nM)



C

ATGACGTCAT

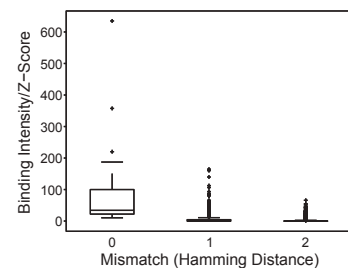
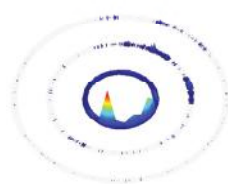


ATF5•BATF
(187 nM)



C

ATGACGTCAT

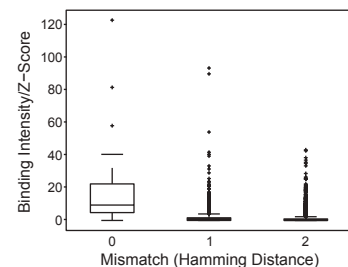
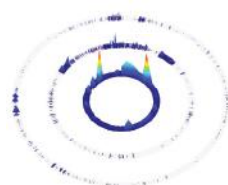


ATF5•BATF2
(>5000 nM)



E

ATGACGTGGC

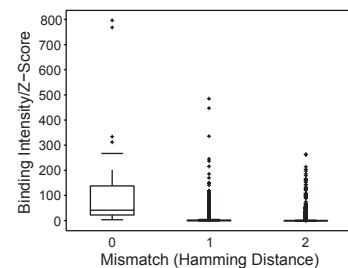
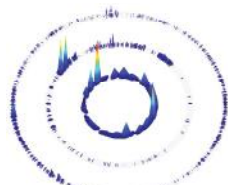


ATF5•BATF3
(385 nM)

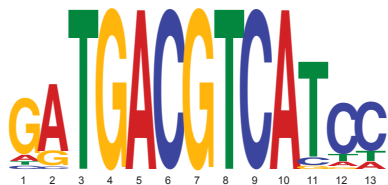


E

ATGACGTGGC

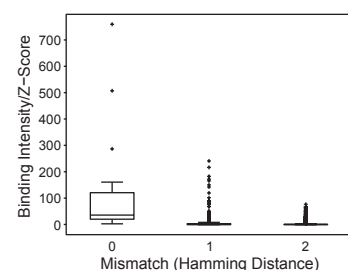
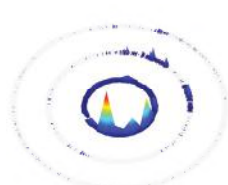


ATF5•CREBZF
(1541 nM)



C

ATGACGTCAT



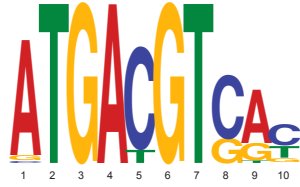
Heterodimer
(PPI, Kd)

MEME motif and classification as
(i) conjoined half-sites (C),
(ii) conjoined half-site with a variable spacer (V), or as
(iii) emergent (E) based on homodimer specificity.

Sequence Specificity &
Energy Landscape (SEL)

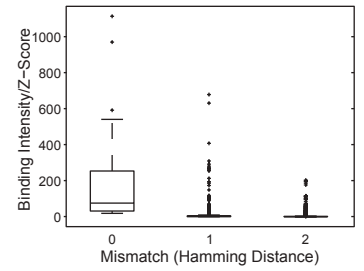
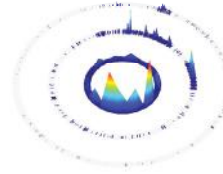
Box plot for SEL rings

ATF5•CREB3L1
(>5000 nM)



C

ATGACGTCAT

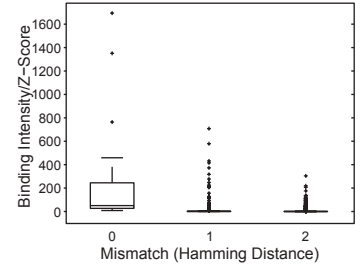


ATF5•CREB3L3
(>5000 nM)



C

ATGACGTCAT

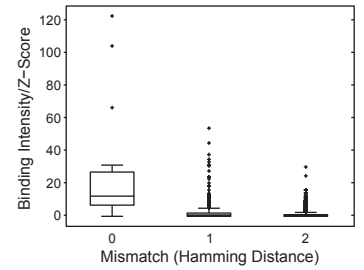
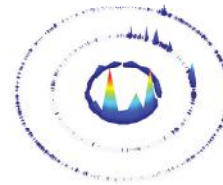


ATF5•FOS
(>5000 nM)



C

ATGACGTCAT

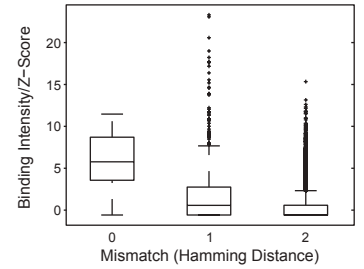


ATF5•JUN
(>5000 nM)



C

ATGACGTCAT

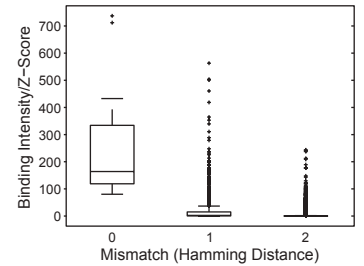
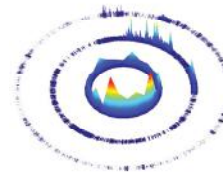


ATF5•JUNB
(>5000 nM)

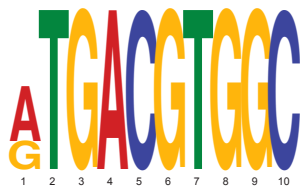


C

ATGACGTCAT

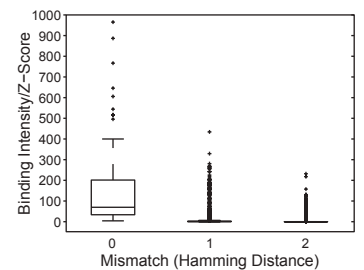
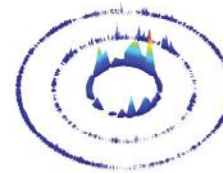


BATF•ATF3
(17 nM)



E

ATGACGTGGC



Heterodimer
(PPI, Kd)

MEME motif and classification as
(i) conjoined half-sites (C),
(ii) conjoined half-site with a variable spacer (V), or as
(iii) emergent (E) based on homodimer specificity.

Sequence Specificity &
Energy Landscape (SEL)

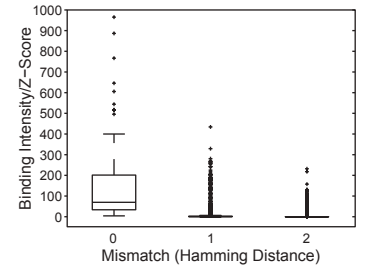
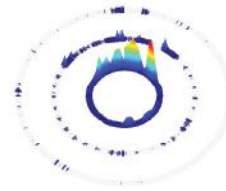
Box plot for SEL rings

BATF•CEBPA
(10 nM)

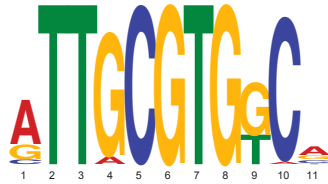


E

ATTGCGTGGC

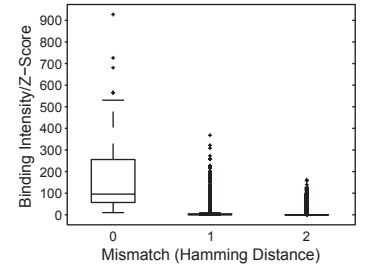
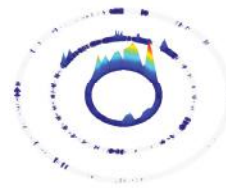


BATF•CEBPE
(23 nM)



E

ATTGCGTGGC

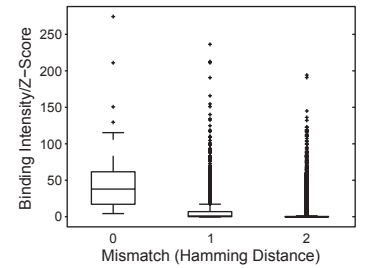
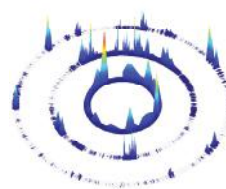


BATF•CEBPG
(<1 nM)



C

ATGACGCAAT

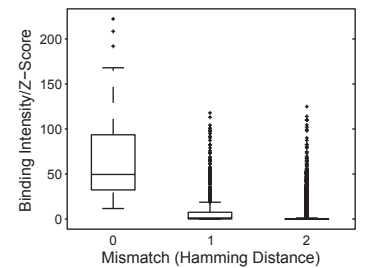
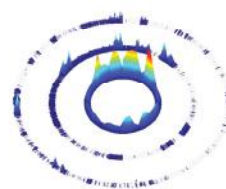


BATF•CEBPG
(<1 nM)



C

ATTGCGTGGC

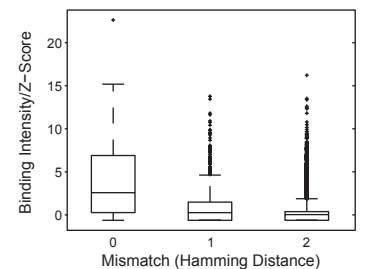
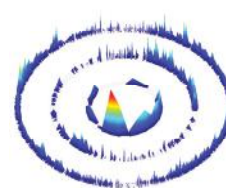


BATF•HLF
(21 nM)



C

ATGACGTCAT

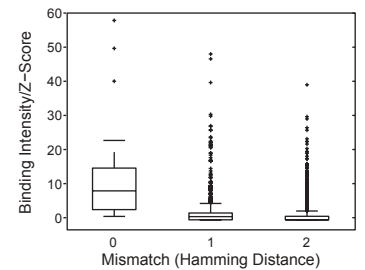
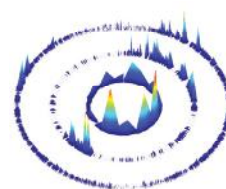


BATF•NFIL3
(291 nM)



C

ATGACGTCAT



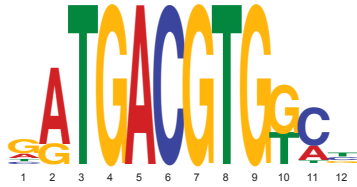
Heterodimer
(PPI, Kd)

MEME motif and classification as
(i) conjoined half-sites (C),
(ii) conjoined half-site with a variable spacer (V), or as
(iii) emergent (E) based on homodimer specificity.

Sequence Specificity &
Energy Landscape (SEL)

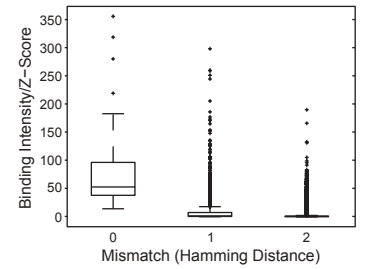
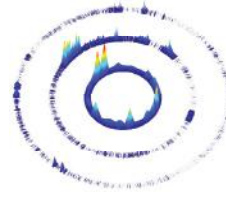
Box plot for SEL rings

BATF2•ATF3
(429 nM)

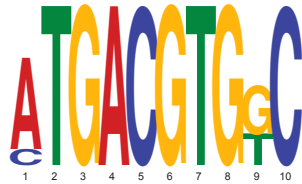


E

ATGACGTGGC

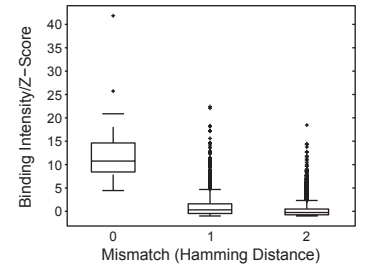
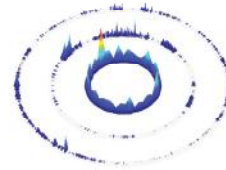


BATF2•ATF4
(11 nM)

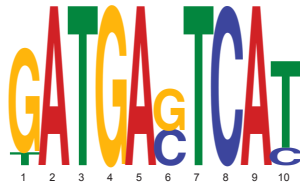


E

ATGACGTGGC

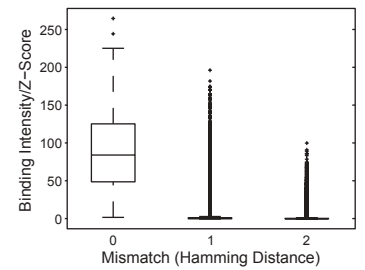
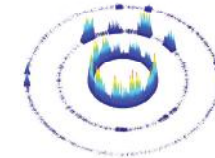


BATF2•JUN
(<1 nM)

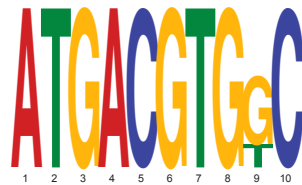


V

ATGAGTCAT

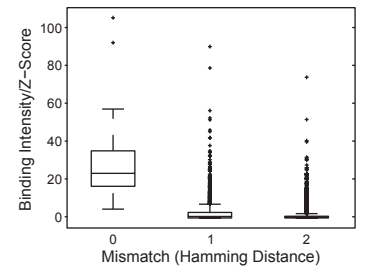
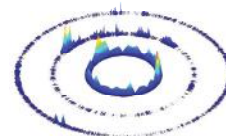


BATF2•JUN
(<1 nM)

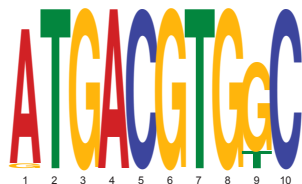


E

ATGACGTGGC

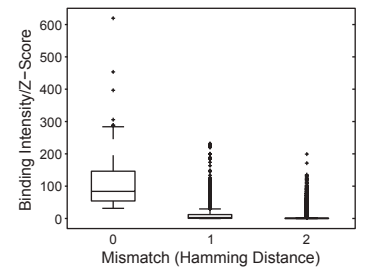
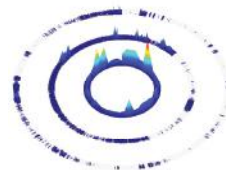


BATF3•ATF3
(5 nM)

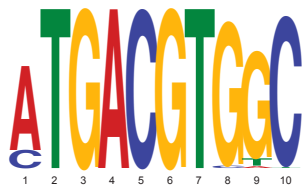


E

ATGACGTGGC

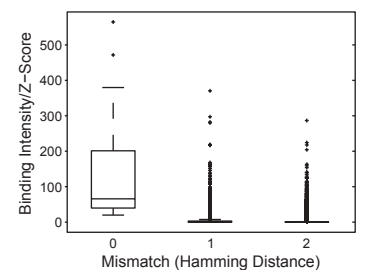
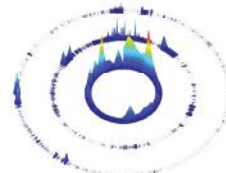


BATF3•ATF4
(4 nM)



E

ATGACGTGGC



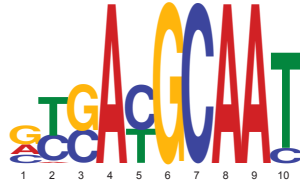
Heterodimer
(PPI, Kd)

MEME motif and classification as
(i) conjoined half-sites (C),
(ii) conjoined half-site with a variable spacer (V), or as
(iii) emergent (E) based on homodimer specificity.

Sequence Specificity &
Energy Landscape (SEL)

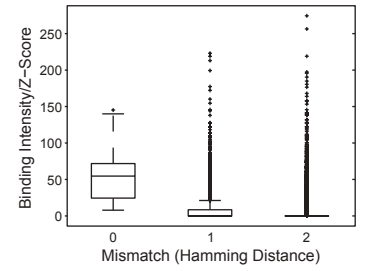
Box plot for SEL rings

BATF3•CEBPA
(5 nM)

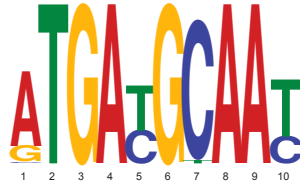


C

ATGACGCAAT

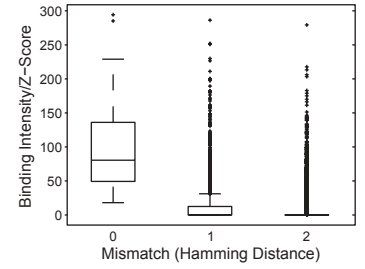
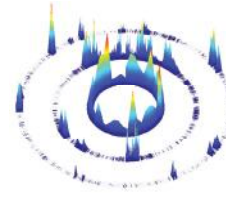


BATF3•CEBPG
(2 nM)



C

ATGACGCAAT

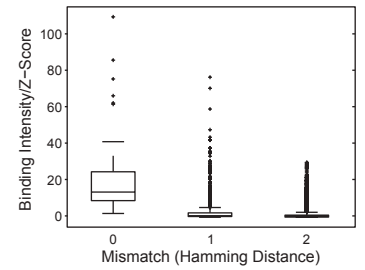
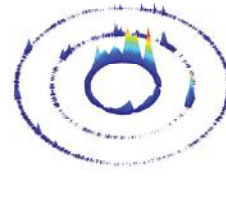


BATF3•NFIL3
(150 nM)

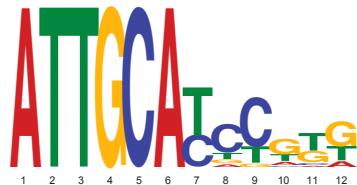


E

ATGACGTGGC

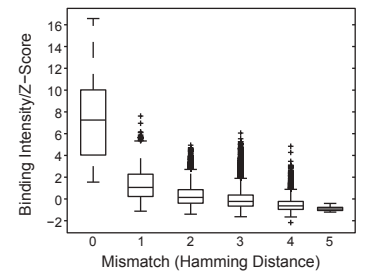


DDIT3•CEBPG
(<1 nM)

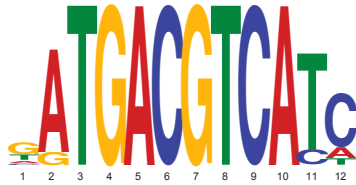


E

ATTGCA

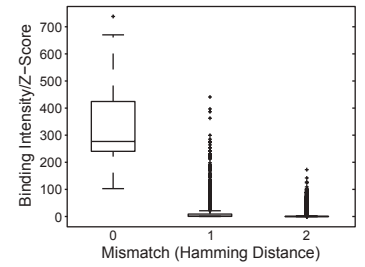
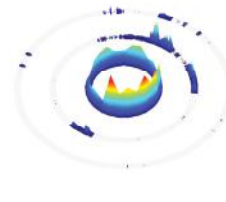


FOS•ATF2
(5 nM)

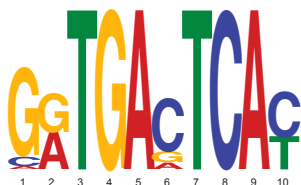


C

ATGACGTCAT

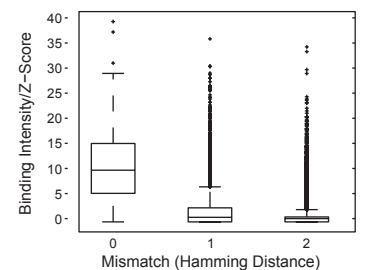
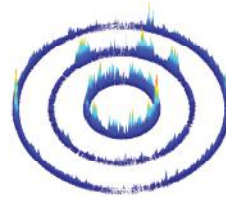


FOS•ATF3
(185 nM)



V

ATGAGTCAT



Heterodimer
(PPI, Kd)

MEME motif and classification as
(i) conjoined half-sites (C),
(ii) conjoined half-site with a variable spacer (V), or as
(iii) emergent (E) based on homodimer specificity.

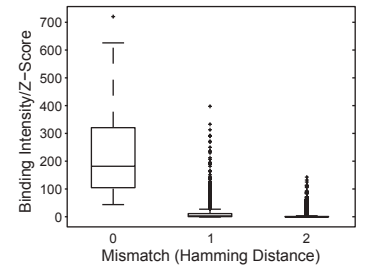
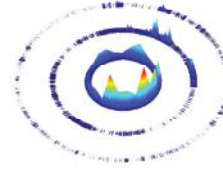
Sequence Specificity &
Energy Landscape (SEL)

Box plot for SEL rings



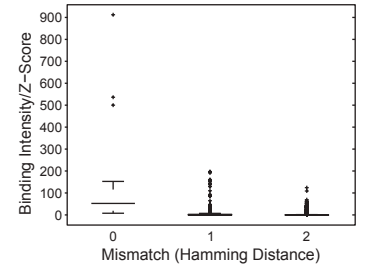
C

ATGACGTCAT



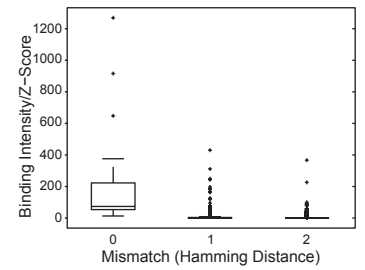
C

ATGACGTCAT



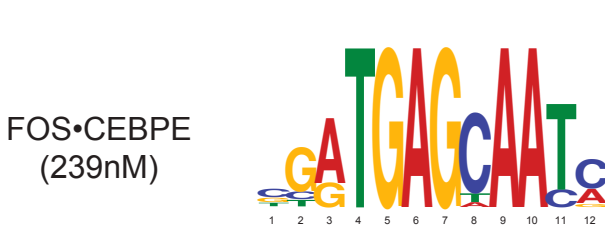
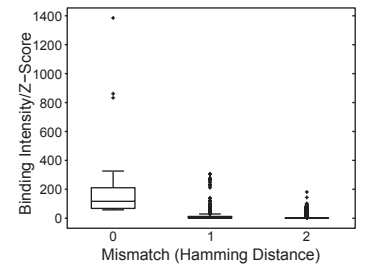
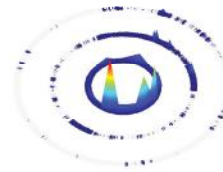
C

ATGACGTCAT



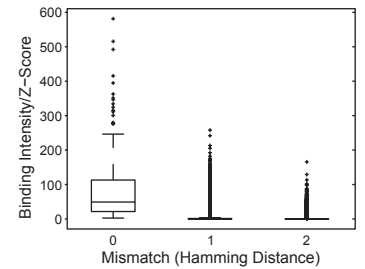
C

ATGACGTCAT



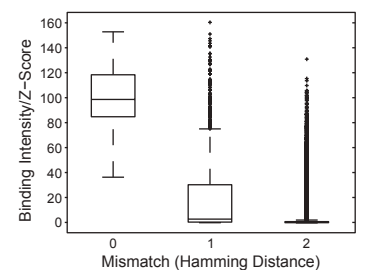
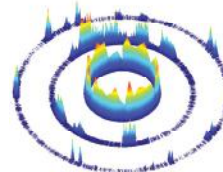
V

ATGAGCAAT



C

ATGACGCAAT



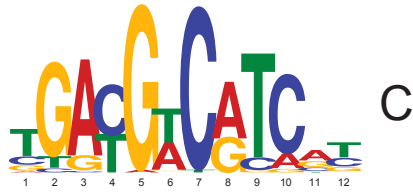
Heterodimer
(PPI, Kd)

MEME motif and classification as
(i) conjoined half-sites (C),
(ii) conjoined half-site with a variable spacer (V), or as
(iii) emergent (E) based on homodimer specificity.

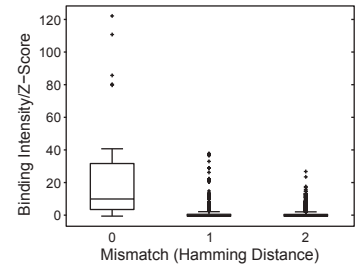
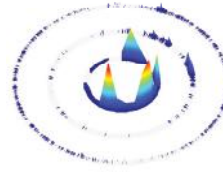
Sequence Specificity &
Energy Landscape (SEL)

Box plot for SEL rings

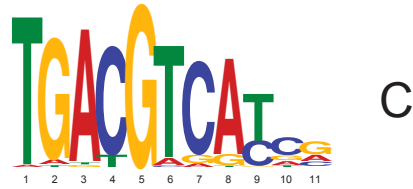
FOS•CREB3
(>5000 nM)



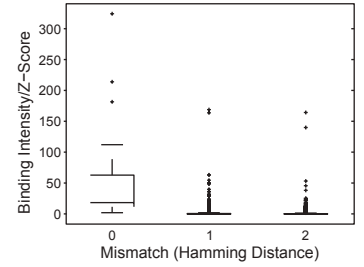
ATGACGTCAT



FOS•CREB3L3
(>5000 nM)



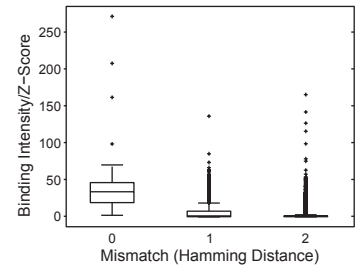
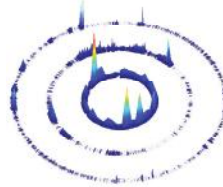
ATGACGTCAT



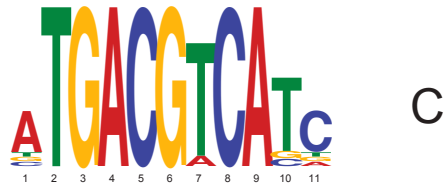
FOS•DBP
(>5000 nM)



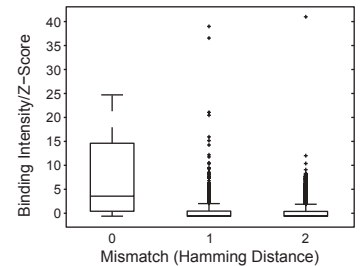
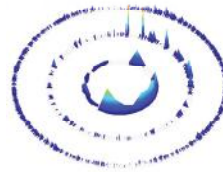
ATGACGTTAC



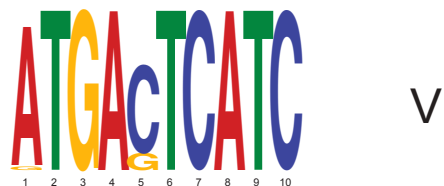
FOS•FOSL1
(<1 nM)



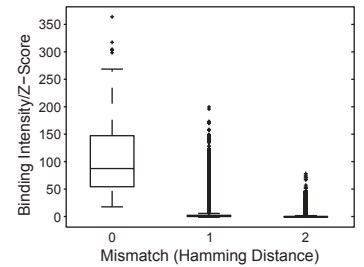
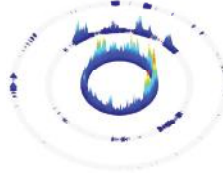
ATGAGTCAT



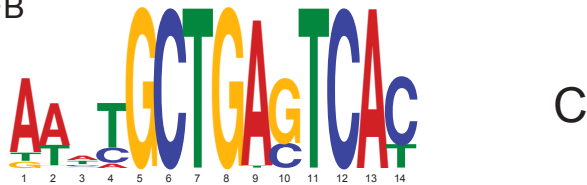
FOS•JUN
(<1 nM)



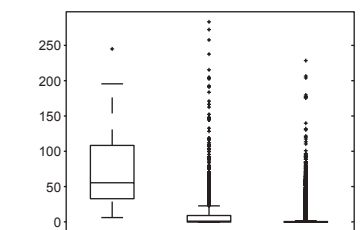
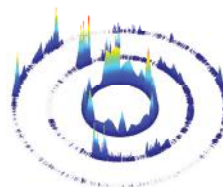
ATGAGTCAT



FOS•MAFB
(63 nM)



GCTGAGTCAT



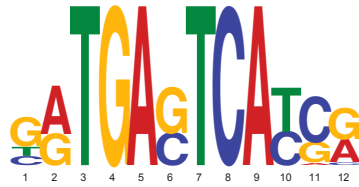
Heterodimer
(PPI, Kd)

MEME motif and classification as
(i) conjoined half-sites (C),
(ii) conjoined half-site with a variable spacer (V), or as
(iii) emergent (E) based on homodimer specificity.

Sequence Specificity &
Energy Landscape (SEL)

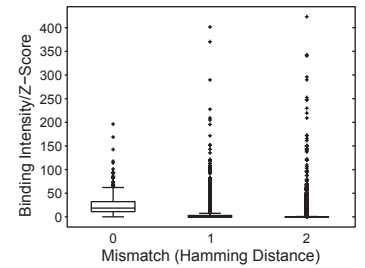
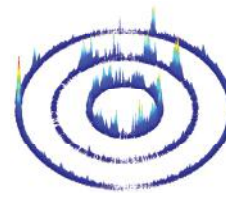
Box plot for SEL rings

FOS•NFE2
(>5000 nM)

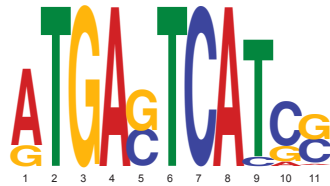


C

ATGAGTCAT

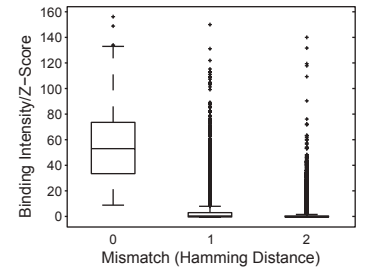
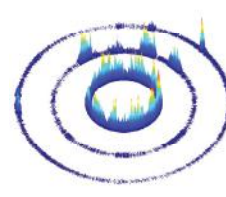


FOS•NFE2L1
(>5000 nM)

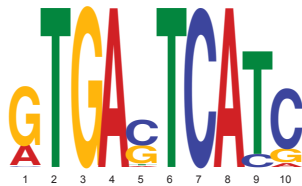


C

ATGAGTCAT

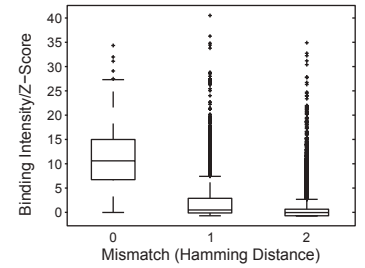
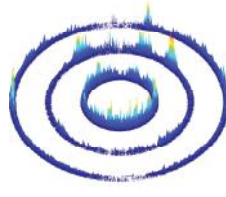


FOSL1•ATF3
(233 nM)

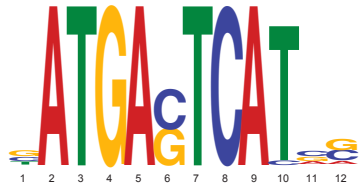


V

ATGAGTCAT

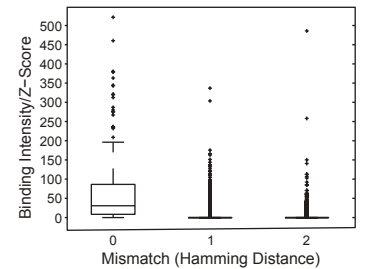
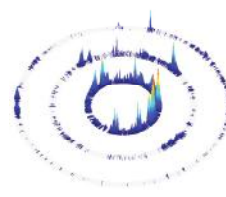


FOSL1•BATF3
(481 nM)

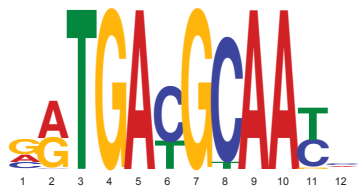


V

ATGAGTCAT

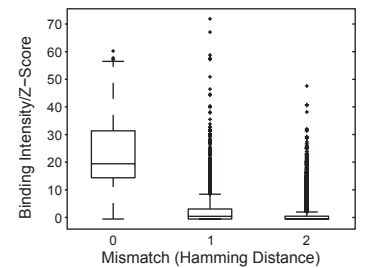
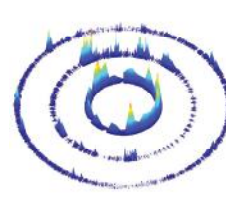


FOSL1•CEBPA
(349 nM)



C

ATGACGCAAT

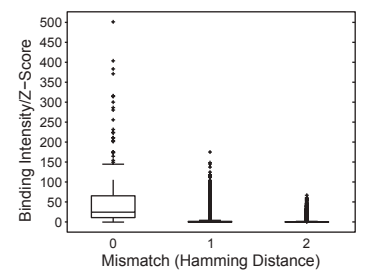
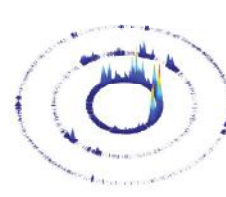


FOSL1•CEBPE
(266 nM)



V

ATGAGCAAT



Heterodimer
(PPI, Kd)

MEME motif and classification as
(i) conjoined half-sites (C),
(ii) conjoined half-site with a variable spacer (V), or as
(iii) emergent (E) based on homodimer specificity.

Sequence Specificity &
Energy Landscape (SEL)

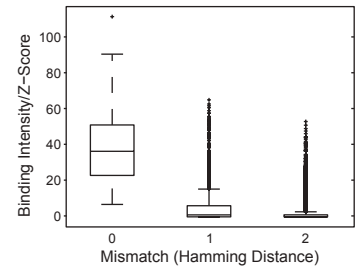
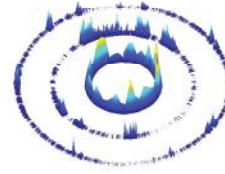
Box plot for SEL rings

FOSL1•CEBPG
(103 nM)

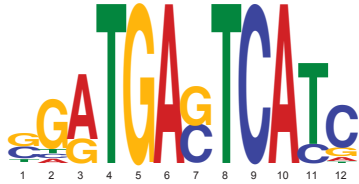


C

ATGACGCAAT

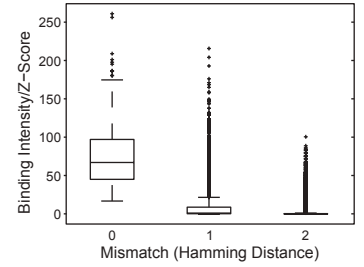
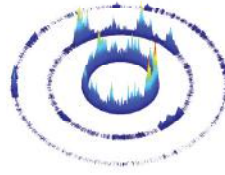


FOSL1•JUN
(<1 nM)

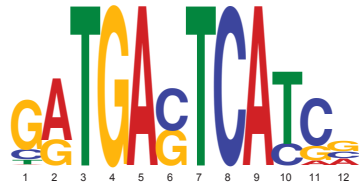


V

ATGAGTCAT

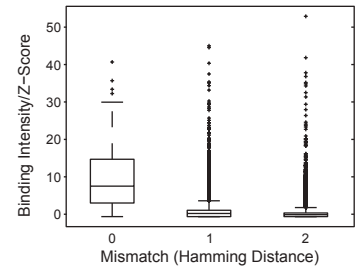


FOSL1•NFE2
(>5000 nM)

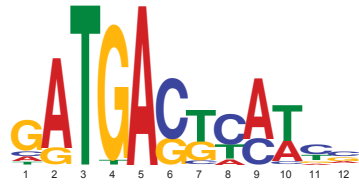


C

ATGAGTCAT

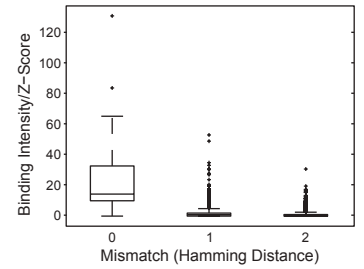
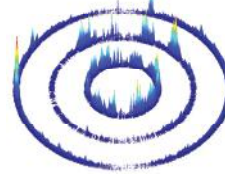


FOSL1•NFE2L1
(>5000 nM)

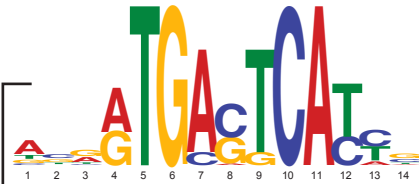


C

ATGAGTCAT

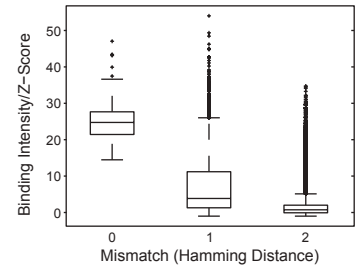
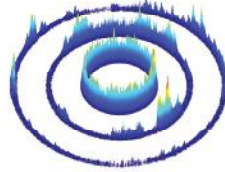


JUN•ATF3
(5 nM)

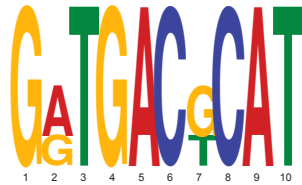


C

ATGAGTCAT

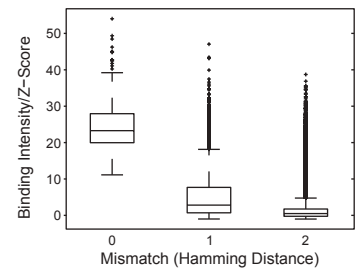
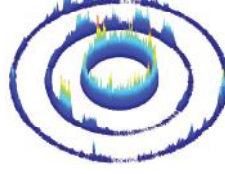


JUN•ATF3
(5 nM)



C

ATGACGCAT



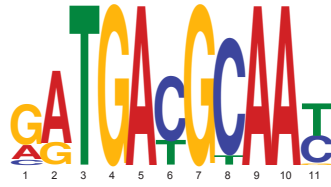
Heterodimer
(PPI, Kd)

MEME motif and classification as
(i) conjoined half-sites (C),
(ii) conjoined half-site with a variable spacer (V), or as
(iii) emergent (E) based on homodimer specificity.

Sequence Specificity &
Energy Landscape (SEL)

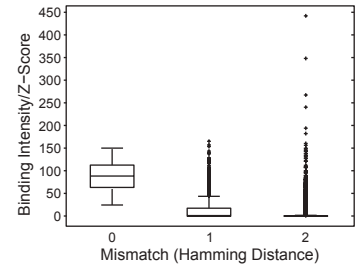
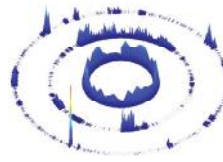
Box plot for SEL rings

JUN•CEBPA
(>5000 nM)

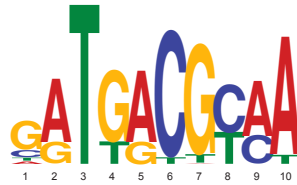


C

ATGACGCAAT

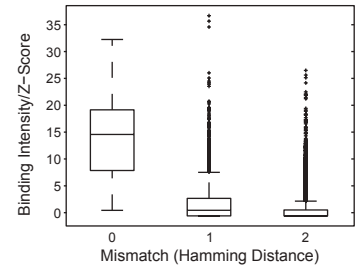
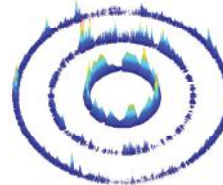


JUN•CEBPG
(289 nM)



C

ATGACGCAAT

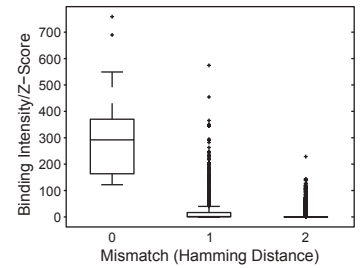
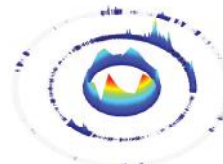


JUNB•ATF2
(891nM)

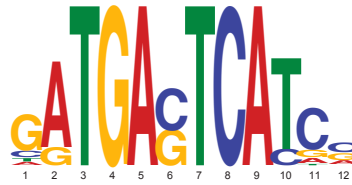


C

ATGACGTCAT

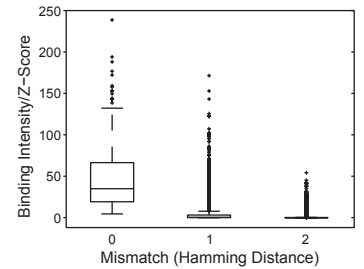
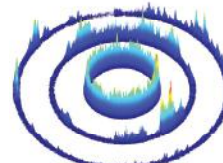


JUNB•ATF3
(8nM)



C

ATGAGTCAT

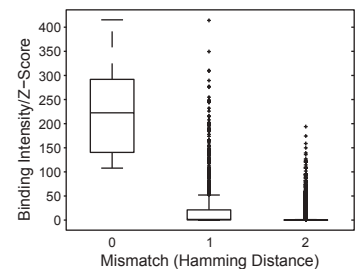
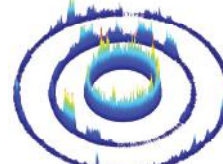


JUNB•ATF3
(8nM)



C

ATGACGTCAT

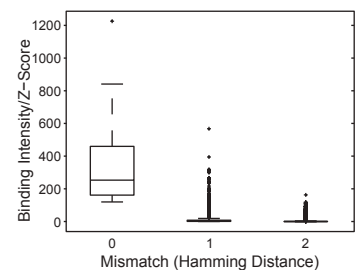
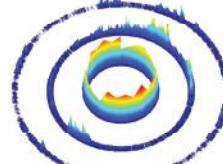


JUNB•ATF4
(266 nM)



C

ATGACGTCAT



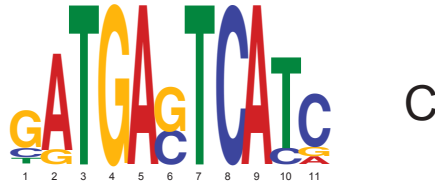
Heterodimer
(PPI, Kd)

MEME motif and classification as
(i) conjoined half-sites (C),
(ii) conjoined half-site with a variable spacer (V), or as
(iii) emergent (E) based on homodimer specificity.

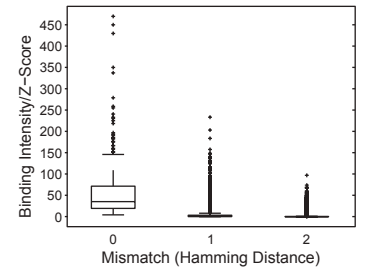
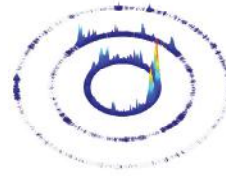
Sequence Specificity &
Energy Landscape (SEL)

Box plot for SEL rings

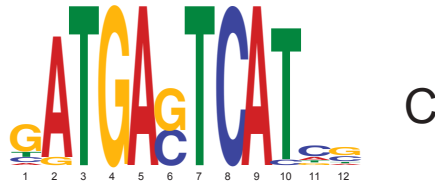
JUNB•BATF
(<1 nM)



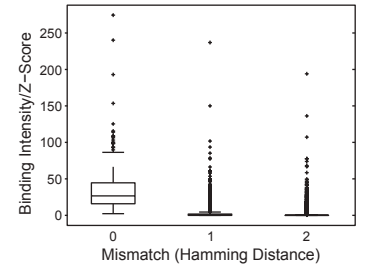
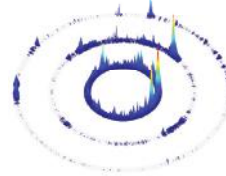
ATGAGTCAT



JUNB•BATF2
(4 nM)



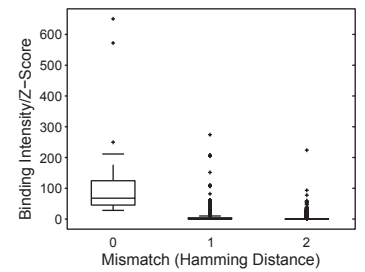
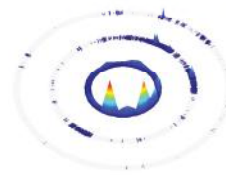
ATGAGTCAT



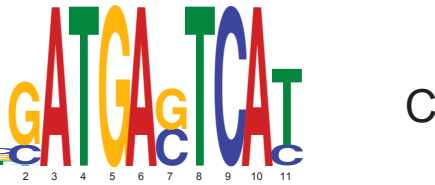
JUNB•BATF2
(4 nM)



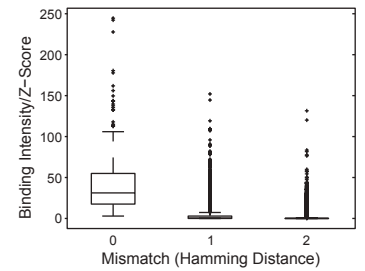
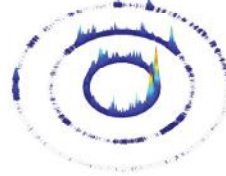
ATGACGTCAT



JUNB•BATF3
(2 nM)



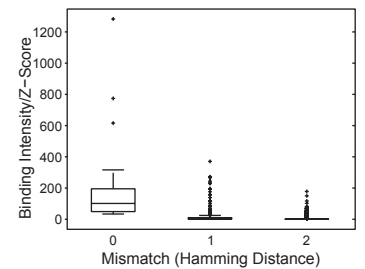
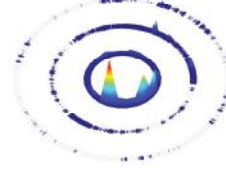
ATGAGTCAT



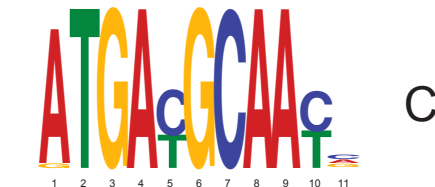
JUNB•BATF3
(2 nM)



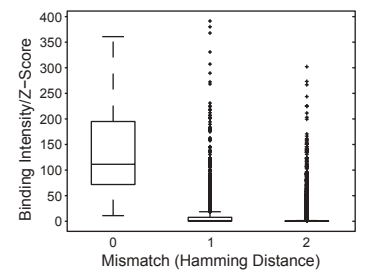
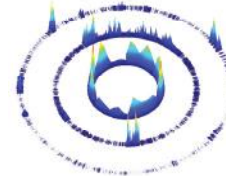
ATGACGTCAT



JUNB•CEBPA
(>5000 nM)



ATGACGCAAT



Heterodimer
(PPI, Kd)

MEME motif and classification as
(i) conjoined half-sites (C),
(ii) conjoined half-site with a variable spacer (V), or as
(iii) emergent (E) based on homodimer specificity.

Sequence Specificity &
Energy Landscape (SEL)

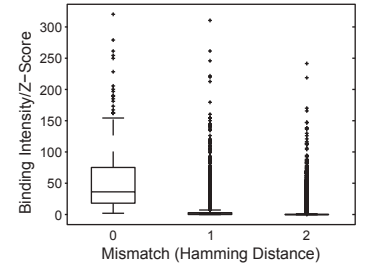
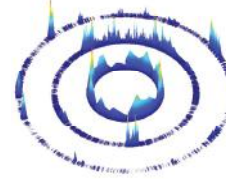
Box plot for SEL rings

JUNB•CEBPE
(1697 nM)



V

ATGACGCAAT

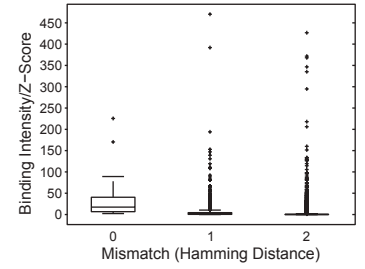
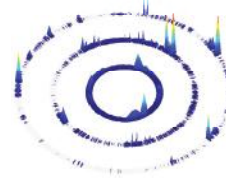


JUNB•CEBPG
(>5000 nM)

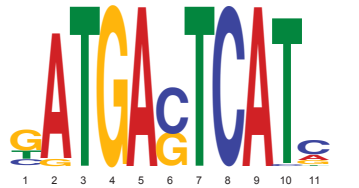


C

ATGACGCAAT

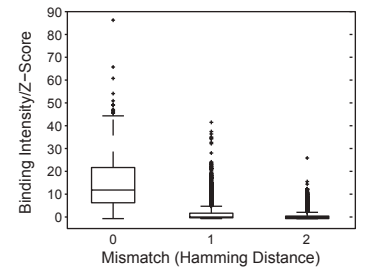
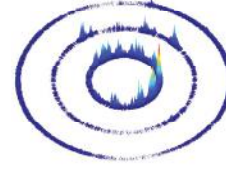


JUNB•CREBZF
(>5000 nM)



C

ATGAGTCAT

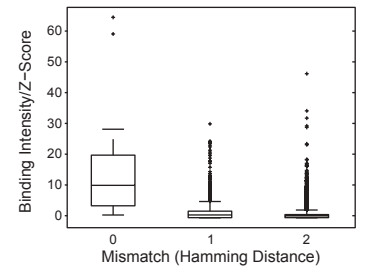
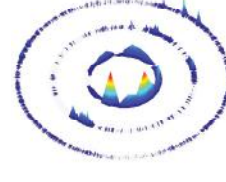


JUNB•DBP
(>5000 nM)



C

ATGACGTCAT

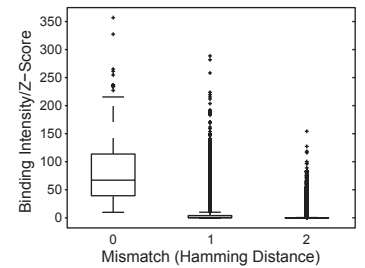
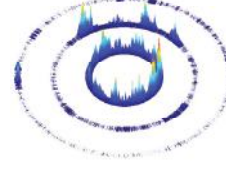


JUNB•FOS
(2 nM)

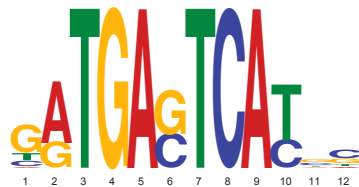


C

ATGAGTCAT

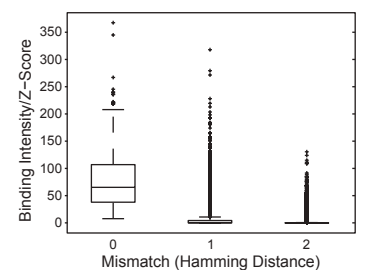
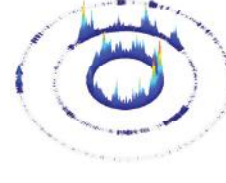


JUNB•FOSL1
(5 nM)



C

ATGAGTCAT



Heterodimer
(PPI, Kd)

MEME motif and classification as
(i) conjoined half-sites (C),
(ii) conjoined half-site with a variable spacer (V), or as
(iii) emergent (E) based on homodimer specificity.

Sequence Specificity &
Energy Landscape (SEL)

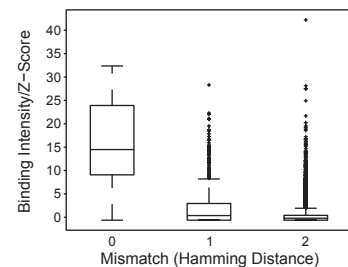
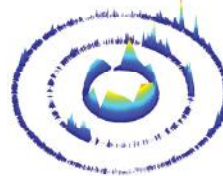
Box plot for SEL rings

JUNB•HLF
(>5000 nM)

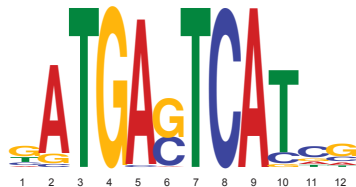


C

ATGACGTCAT

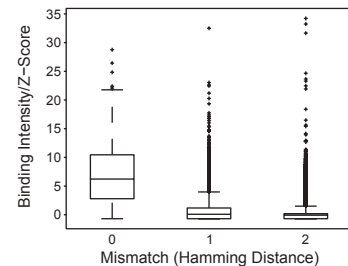
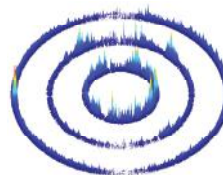


JUNB•JUN
(>5000 nM)

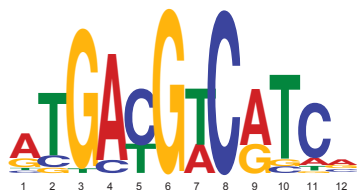


C

ATGAGTCAT

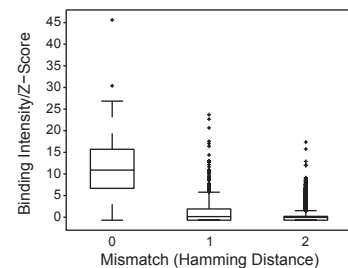
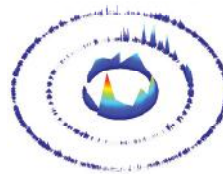


JUNB•JUN
(>5000 nM)



C

ATGACGTCAT

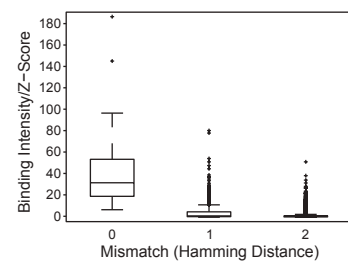
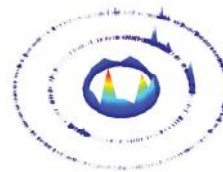


JUNB•NFE2
(>5000 nM)



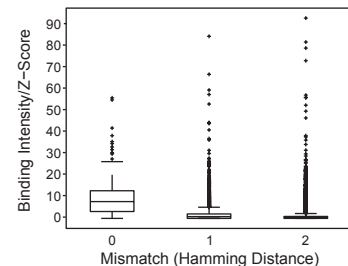
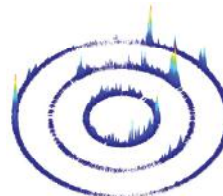
C

ATGACGTCAT



JUNB•NFE2
(>5000 nM)

ATGAGTCAT



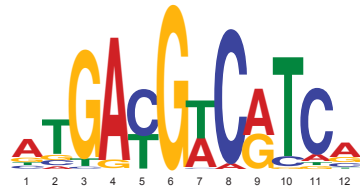
Heterodimer
(PPI, Kd)

MEME motif and classification as
(i) conjoined half-sites (C),
(ii) conjoined half-site with a variable spacer (V), or as
(iii) emergent (E) based on homodimer specificity.

Sequence Specificity &
Energy Landscape (SEL)

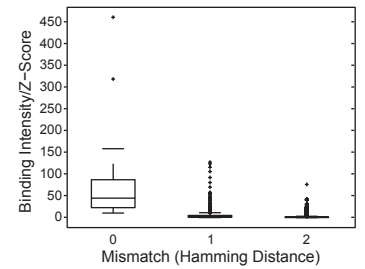
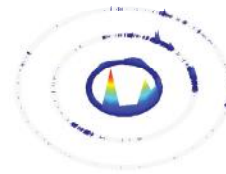
Box plot for SEL rings

JUNB•NFE2L1
(>5000 nM)

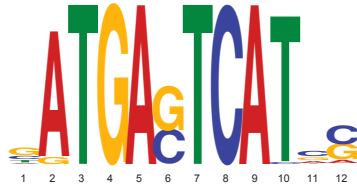


C

ATGACGTCAT

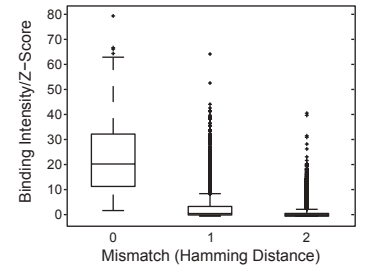
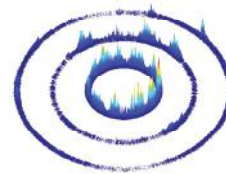


JUNB•NFE2L1
(>5000 nM)

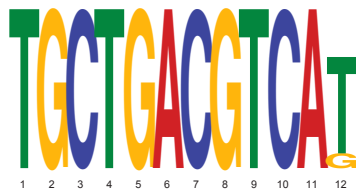


C

ATGAGTCAT

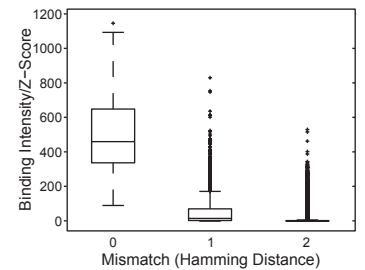


MAFB•ATF4
(193 nM)

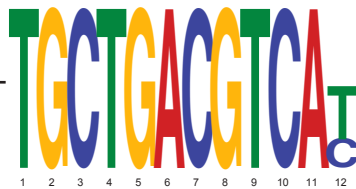


C

TGCTGACGTCAT

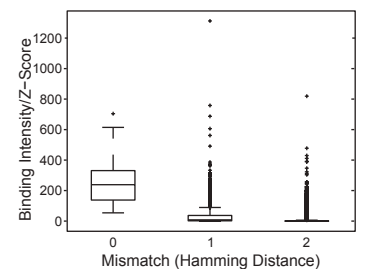


MAFB•ATF5
(>5000 nM)

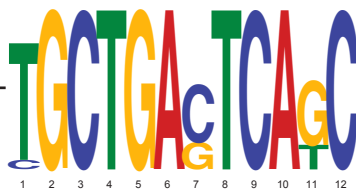


C

TGCTGACGTCAT

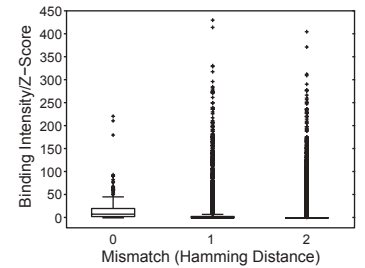
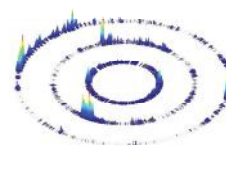


MAFB•ATF5
(>5000 nM)



C

TGCTGAGTCAT



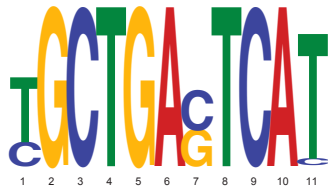
Heterodimer
(PPI, Kd)

MEME motif and classification as
(i) conjoined half-sites (C),
(ii) conjoined half-site with a variable spacer (V), or as
(iii) emergent (E) based on homodimer specificity.

Sequence Specificity &
Energy Landscape (SEL)

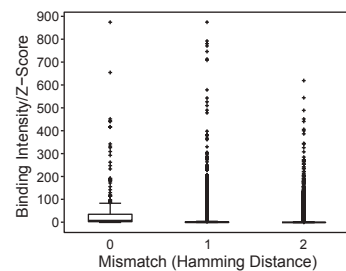
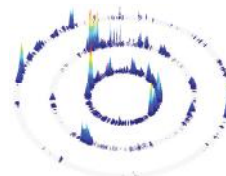
Box plot for SEL rings

MAFB•FOSL1
(152 nM)

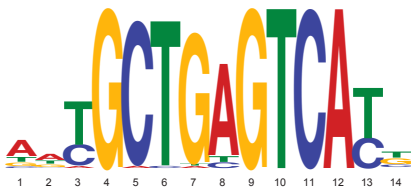


C

TGCTGAGTCAAT

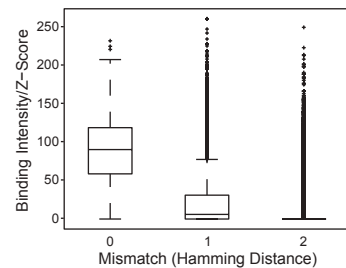


NFE2•MAFG
(1340 nM)

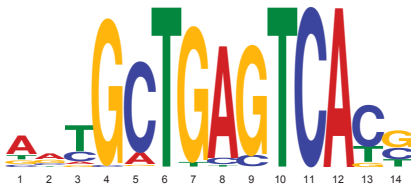


C

TGCTGAGTCAAT



NFE2L1•MAFG
(<1 nM)



C

TGCTGAGTCAAT

