

Appendix 1A: Consort diagram to demonstrate cohort selection

A

Initial Clinical Cohort (N=819)



- Inclusion criteria:
- FFPE blocks of resected primary tumors available

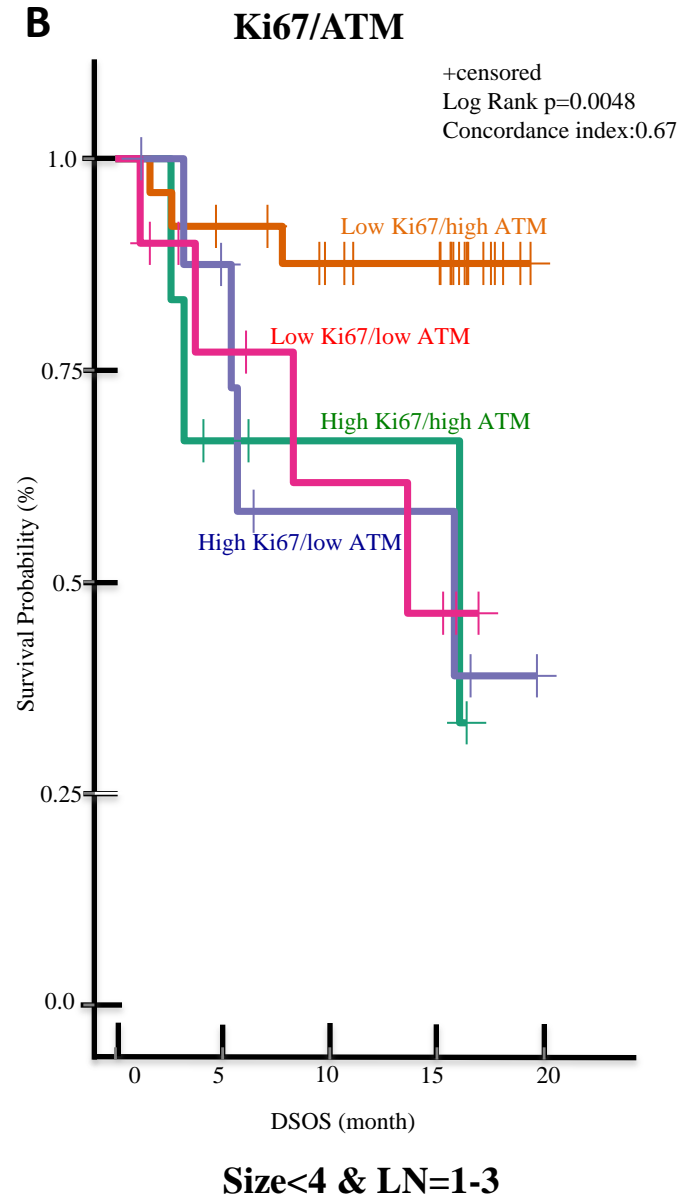
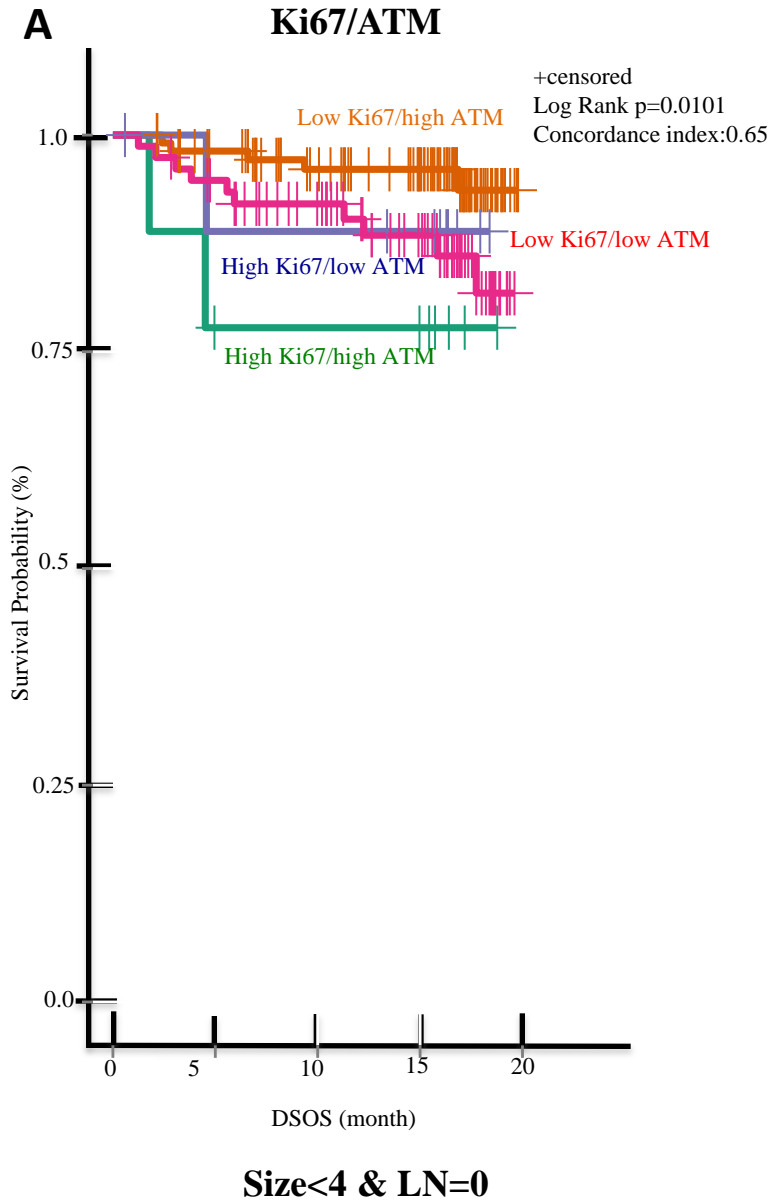
TMA Cohort (N=532)



- Inclusion criteria:
- Stage I-III and underwent surgical lumpectomy or mastectomy
 - Successful biomarker staining for both ATM and Ki67
 - Confirmed ER/PR positivity on TMA spot
 - Confirmed HER2 negativity by IHC

Final Cohort (N=297)

Appendix 2: Low Ki67/high ATM expressions in malignant tumor predict favorable DSOS in ES-HPBC (size<4cm & LN=0 or LN=1-3).



Appendix 3: Single vs Combined biomarkers predict disease survival in a multivariate model in ES-HPBC (Stage I-III)

A	Variables	p value	HR (95%CI)
	Low Ki67/high ATM vs others*	0.01	0.33 (0.15-0.73)
	Tumor size (T1/2 vs T3/4)	<0.0001	0.17 (0.05-0.58)
	LN status (- vs +)	0.07	0.50 (0.24-1.06)
	LVI (_- vs +)	0.26	0.65 (0.31-1.37)
	Grade (1/2 vs 3)	0.01	0.37 (0.18-0.76)
	Age (<65 vs >65)	0.06	0.51 (0.25-1.04)

* Low Ki67/low ATM, High Ki67/high ATM and High Ki67/low ATM

B	Variables	p value	HR (95%CI)
	Low Ki67 vs High Ki67	0.15	0.58 (0.87-1.22)
	Tumor size (T1/2 vs T3/4)	<0.0001	0.11 (0.03-0.35)
	LN status (- vs +)	0.13	0.56 (0.26-1.19)
	LVI (_- vs +)	0.23	0.63 (0.30-1.34)
	Grade (1/2 vs 3)	0.01	0.34 (0.16-0.72)
	Age (<65 vs >65)	0.06	0.50 (0.25-1.02)

C	Variables	p value	HR (95%CI)
	High ATM vs low ATM	0.15	0.61 (0.30-1.20)
	Tumor size (T1/2 vs T3/4)	<0.0001	0.14 (0.04-0.49)
	LN status (- vs +)	0.07	0.50 (0.24-1.07)
	LVI (_- vs +)	0.28	0.66 (0.31-1.40)
	Grade (1/2 vs 3)	<0.0001	0.31 (0.15-0.63)
	Age (<65 vs >65)	0.07	0.52 (0.26-1.06)