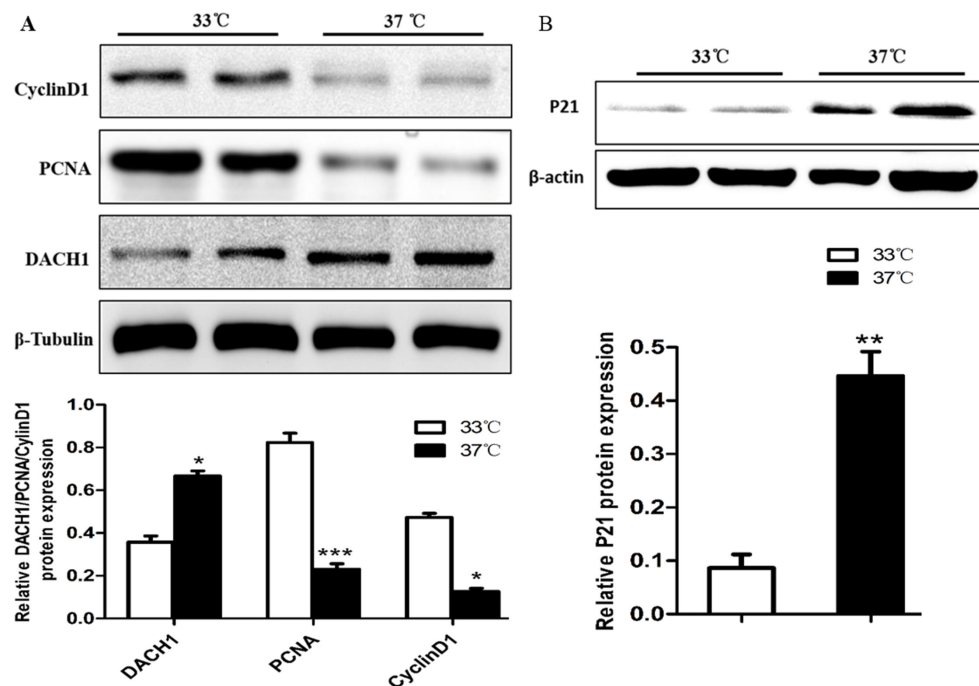
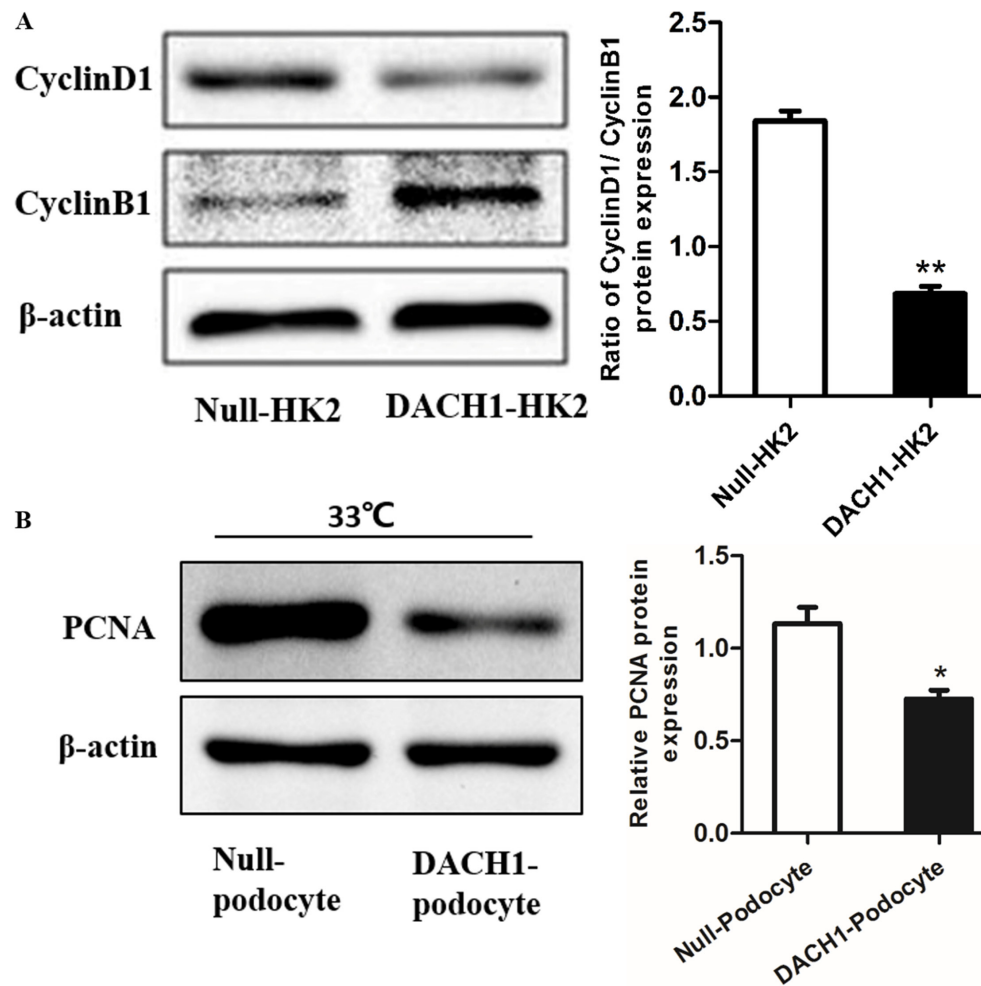


Decreased DACH1 expression in glomerulopathy is associated with disease progression and severity

Supplementary Materials



Supplementary Figure S1: Expression of DACH1 and cell cycle-related proteins were changed during temperature-switched cell growth arrest in podocytes. (A) Representative Western blot images and summarized data showing DACH1 was upregulated, while PCNA, CyclinD1 were downregulated during podocytes cultured by temperature-switched. (B) representative Western blot images and summarized data showing that p21 was increased during podocytes cultured by temperature-switched. * $P < 0.05$, ** $P < 0.01$, *** $P < 0.001$ vs. cultured in a permissive temperature (33°C). All experiment were performed at least thrice with samples from independent experiments.



Supplementary Figure S2: Effects of DACH1 overexpression on cell cycle-related proteins in HK2 and Podocytes. (A) Representative Western blot images showing cyclin D1 and cyclin B1 expression and summarized data showing the ratio of cyclin D1/ cyclin B1 after Plasmid.DACH1-transfected HK2. (B) representative Western blot images and summarized data showing that the abundance PCNA was decreased in Plasmid.DACH1-transfected podocytes cultured in a permissive temperature (33°C). * $P < 0.05$, ** $P < 0.01$ vs. Null-HK2 or Null-podocyte. All experiment were performed at least thrice with samples from independent experiments.