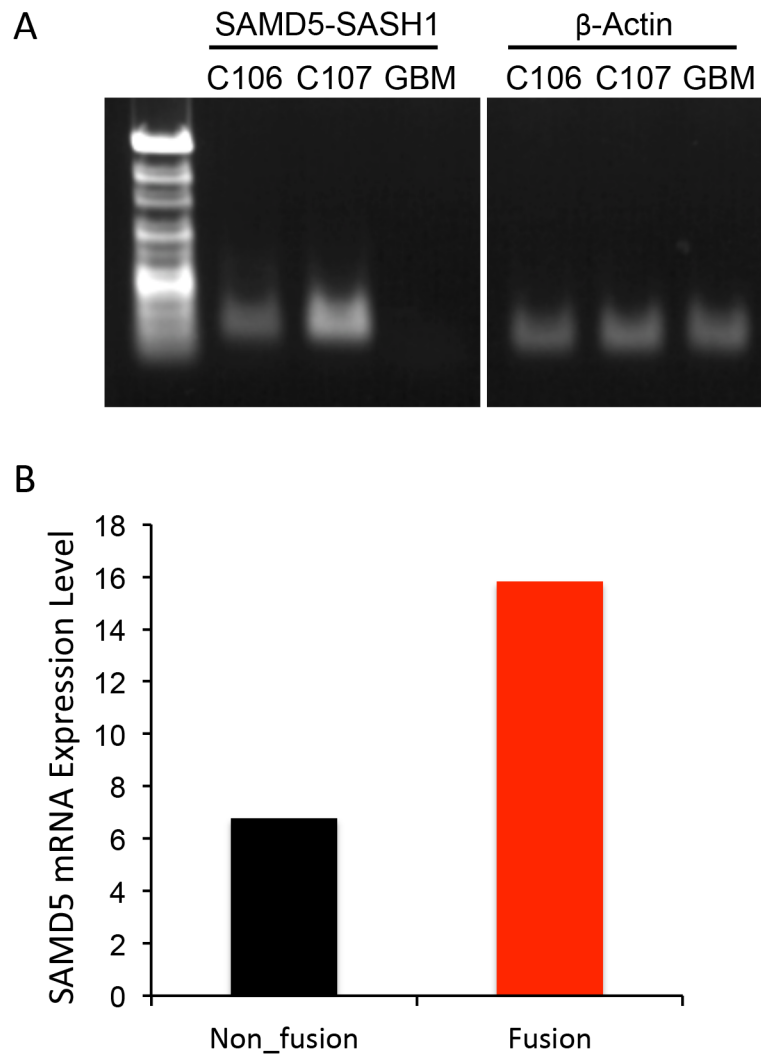


Genomic and transcriptomic characterization of skull base chordoma

SUPPLEMENTARY FIGURE



Supplementary Figure S1: qRT-PCR of SAM D5-SASH1 fusion and SAM D5 mRNA expression level. **A.** *SAM D5-SASH1*-specific PCR from cDNA derived from skull base chordoma harboring *SAM D5-SASH1* fusion. GBM was used as a control for comparison. **B.** Relative mRNA expression of *SAM D5* gene in *SAM D5-SASH1* fusion harboring samples vs. non-harboring sample.