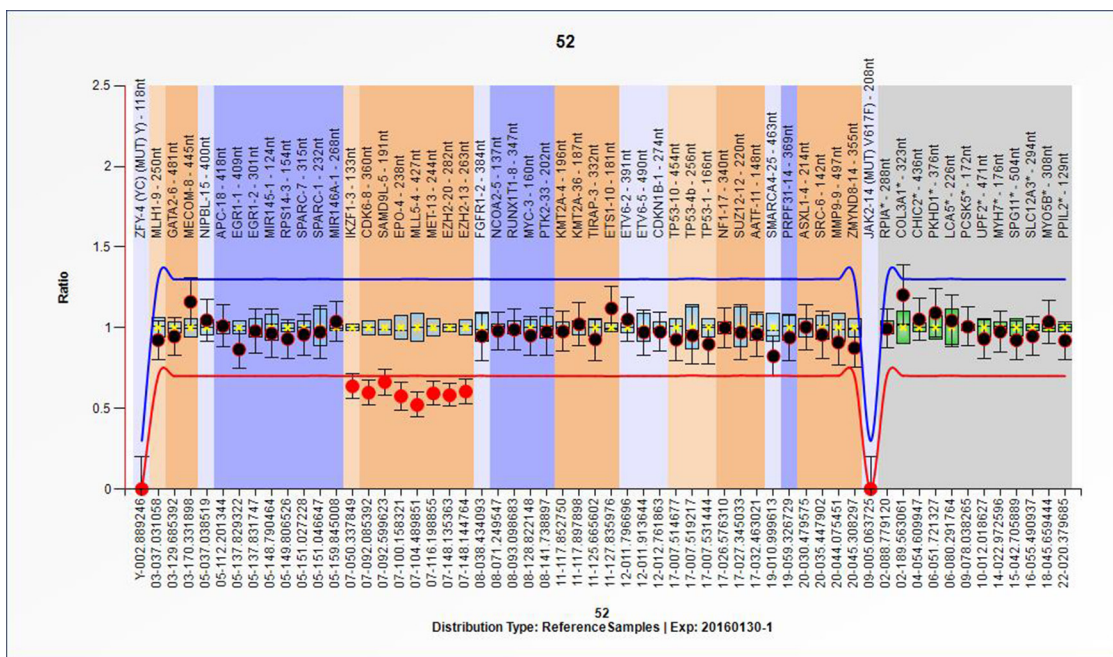
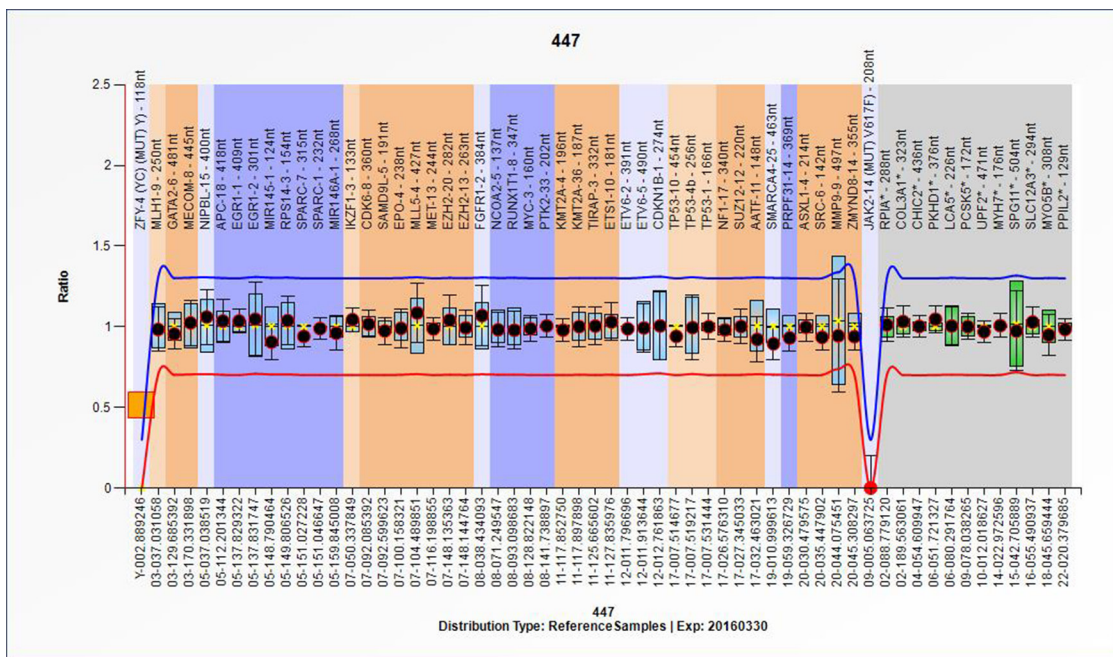
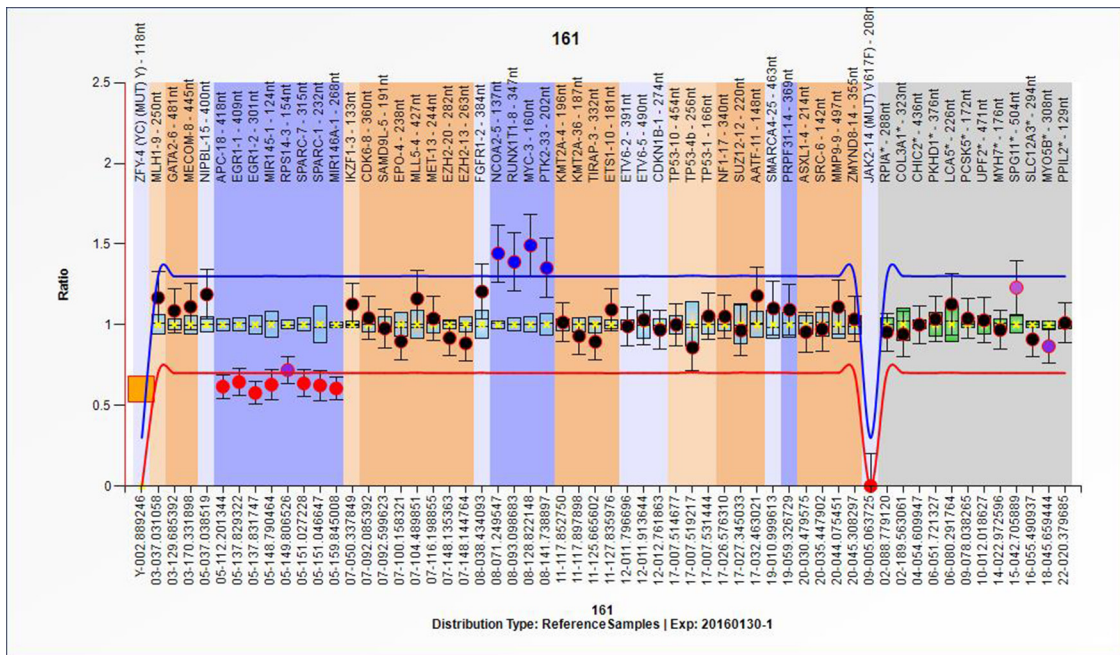
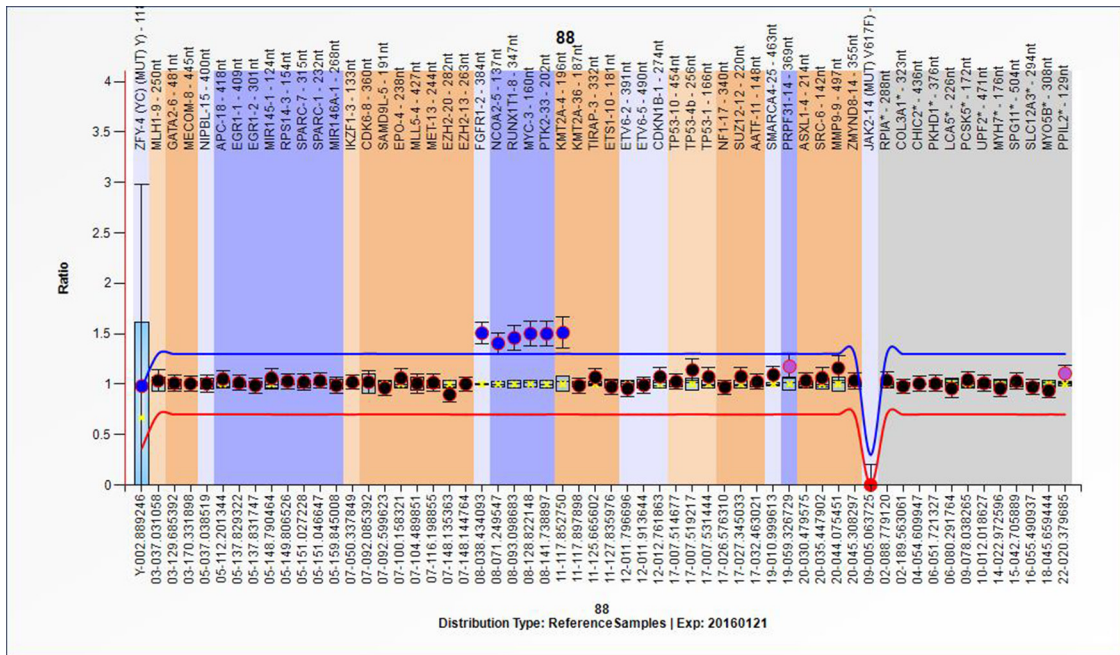


# Multiplex ligation-dependent probe amplification assay identifies additional copy number changes compared with R-band karyotype and provide more accuracy prognostic information in myelodysplastic syndromes

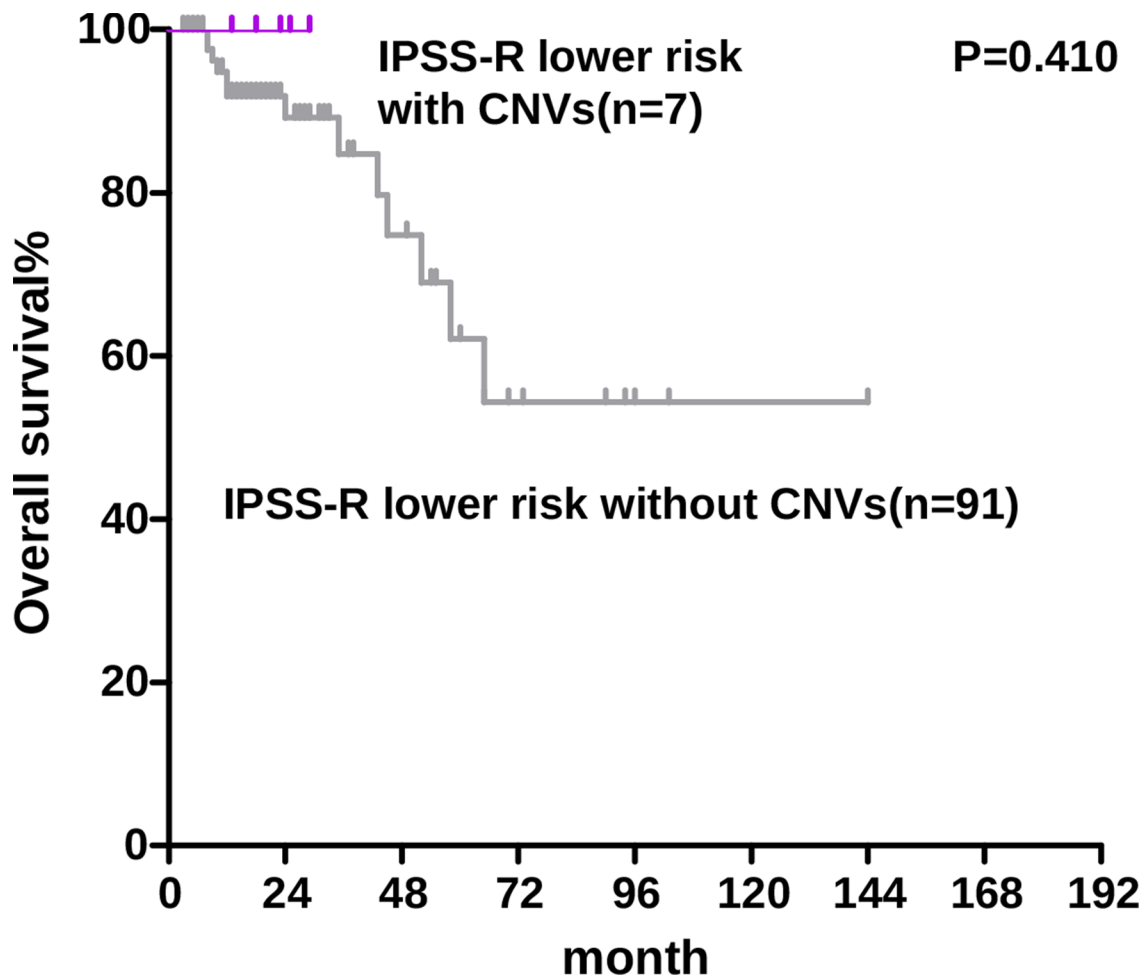
## SUPPLEMENTARY FIGURES AND TABLES



(Continued)



**Supplementary Figure S1: The abnormalities detected by MLPA. A. Normal karyotype. B. MLPA detection of -7 in a patient with normal G-band karyotype. C. MLPA detection of +8/11q+ in a patient with normal G-band karyotype. D. MLPA detection of 5q+/+8 in a patient with 47,XY,+8[20].**



Supplementary Figure S2: Overall survival of normal karyotype IPSS-R lower risk patients with CNVs detected by MLPA (median OS: not reached) and patients without CNVs (median OS: not reached).

**Supplementary Table S1: Probe-specific normal reference ranges established in multiplex ligation-dependent amplifications assay for MDS**

See Supplementary File S1

**Supplementary Table S2: The 112 genes sequenced in this study**

|        |        |             |        |         |        |        |        |
|--------|--------|-------------|--------|---------|--------|--------|--------|
| ABCB1  | ABL1   | ADAMTS13    | AKT1   | ALAS2   | ARID1A | ASXL1  | ATM    |
| BCL2   | BCL6   | BIRC3       | BRAF   | CALR    | CBL    | CCND1  | CCND3  |
| CDKN1A | CEBPA  | c-MAF       | c-MYC  | CREBBP  | CRLF2  | CSF3R  | CUX1   |
| CXCR4  | CYLD   | DDX3X       | DIS3   | DNM2    | DNMT3A | ECT2L  | EED    |
| EGFR   | EP300  | EPHA7       | EZH2   | FAM46C  | FANCA  | FANCC  | FANCG  |
| FAT1   | FBXW7  | FGFR3       | FLT3   | GATA2   | GATA3  | IDH1   | IDH2   |
| IL7R   | ITK    | JAK1        | JAK2   | JAK3    | KIT    | KRAS   | SH2B3  |
| LYST   | MAFB   | MAPK1       | MLL2   | MPL     | MUM1   | MYD88  | MYH11  |
| NF1    | NOTCH1 | NOTCH2      | NPM1   | NRAS    | PAX5   | PDGFRB | PHF6   |
| PIK3CA | PRDM1  | PRF1        | PRMT5  | PRPF40B | PTEN   | PTPN11 | RAB27A |
| RB1    | RELN   | RUNX1       | SAMHD1 | SETBP1  | SF1    | SF3A1  | SF3B1  |
| SH2D1A | SMC1A  | SMC3        | SRSF2  | STX11   | STXBP2 | SUZ12  | TAL1   |
| TET2   | TP53   | TEL/ETV6    | TRAF3  | U2AF1   | U2AF2  | UNC13D | WAS    |
| WHSC1  | WT1    | TNFAIP3/A20 | XIAP   | XPO1    | ZMYM3  | ZRSR2  | IKZF1  |