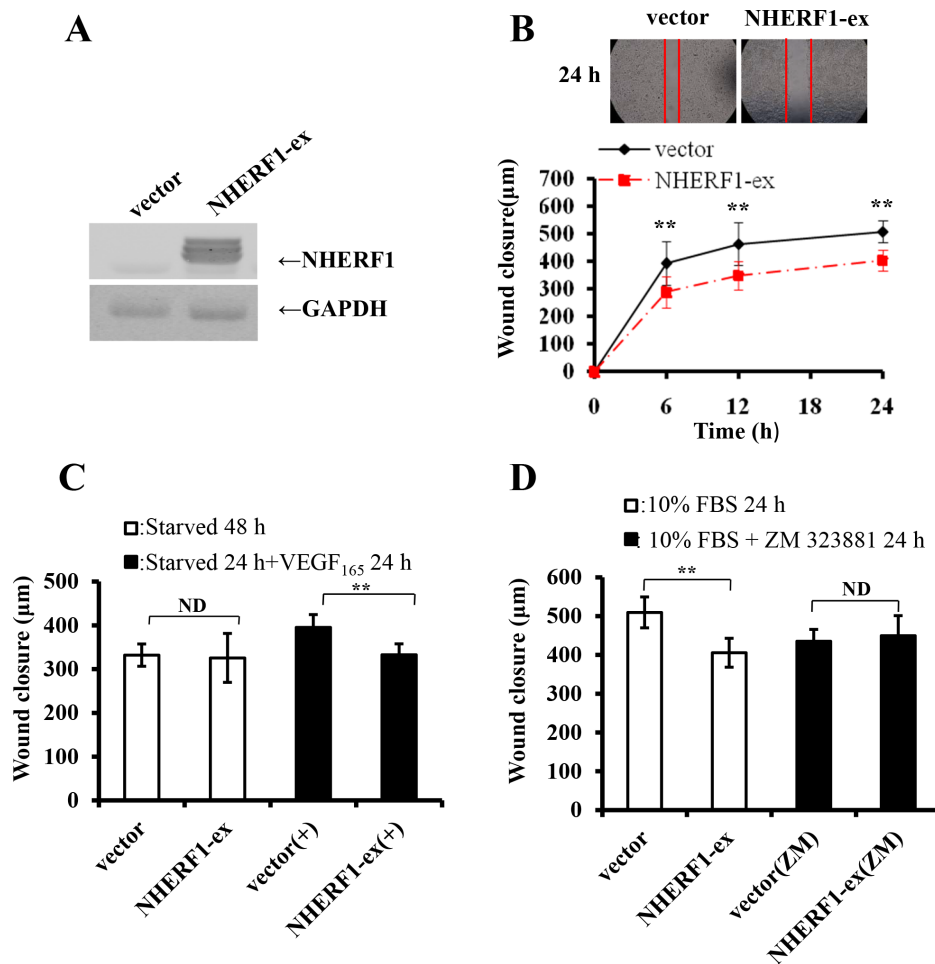


NHERF1 regulates the progression of colorectal cancer through the interplay with VEGFR2 pathway

Supplementary Materials



Supplementary Figure S1: NHERF1 overexpression inhibited the migration of HRT-18 cells through the VEGFR2 pathway. NHERF1 plasmid was transfected into HRT-18 cells and the expression of NHERF1 was assessed by Western blotting (A) Overexpression of NHERF1 inhibited cell migration (B) and VEGF₁₆₅-induced cell migration (C) ZM-323881 removed the inhibitory effect of NHERF1 on cell migration (D). The results represent the mean values ± SD of three independent experiments (B, C, D). **p* < 0.05, ***p* < 0.01.