

**Phase I Study of Nivolumab, an Anti-PD-1 Antibody, in Patients with Malignant Solid Tumors**

Noboru Yamamoto<sup>1</sup>, Hiroshi Nokihara<sup>1</sup>, Yasuhide Yamada<sup>2</sup>, Takashi Shibata<sup>1</sup>, Yosuke Tamura<sup>1</sup>, Yoshitaka Seki<sup>1</sup>, Kazunori Honda<sup>1</sup>, Yuko Tanabe<sup>1</sup>, Hiroshi Wakui<sup>1</sup>, Tomohide Tamura<sup>1</sup>

<sup>1</sup>Department of Thoracic Oncology, National Cancer Center Hospital, Tokyo, Japan

<sup>2</sup>Department of Gastrointestinal Oncology, National Cancer Center Hospital, Tokyo, Japan

**Corresponding author**

Noboru Yamamoto, MD, PhD

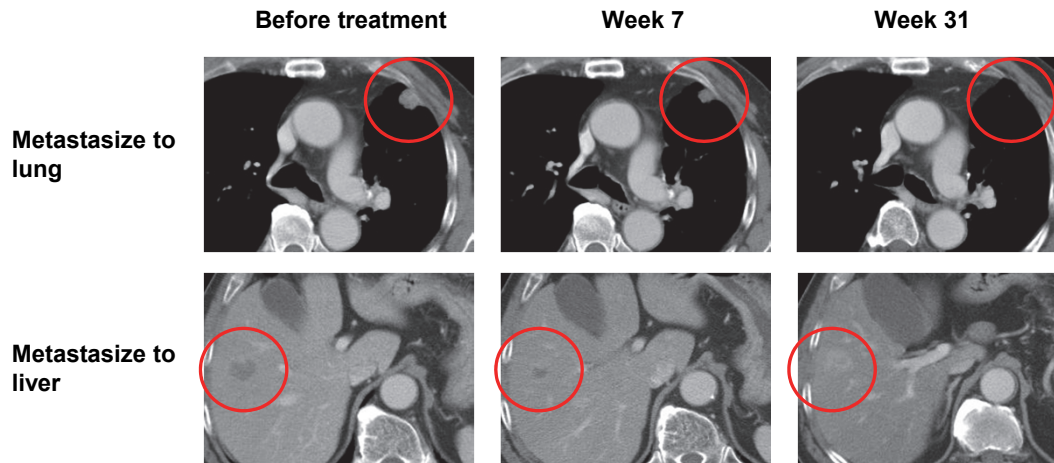
Department of Thoracic Oncology, National Cancer Center Hospital

5-1-1 Tsukiji, Chuo-ku, Tokyo 1040045, Japan

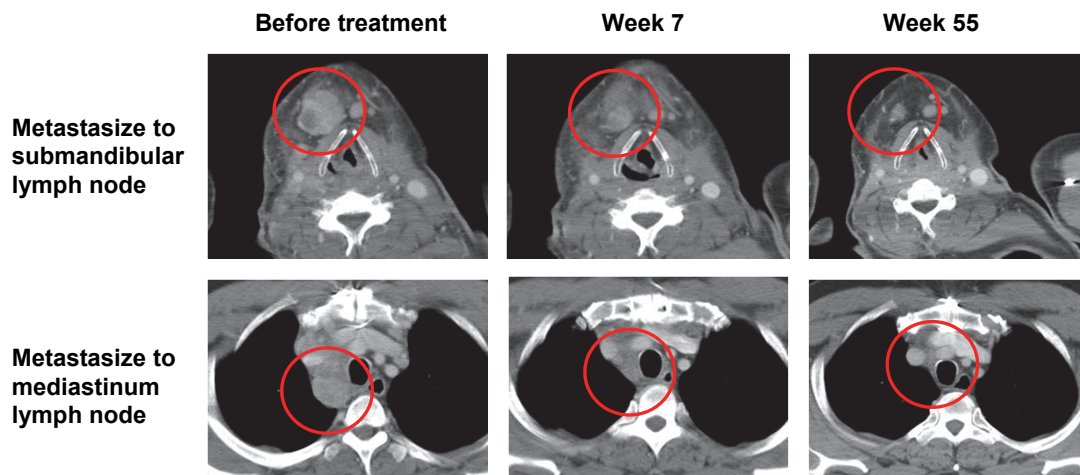
E-mail: nbryamam@ncc.go.jp

## Online Resource Fig. 1

### Rectal cancer (1 mg/kg cohort)



### Thyroid cancer (10 mg/kg cohort)



**Online Resource Fig. 1** Cancer regression in a patient with rectal cancer treated with 1 mg/kg nivolumab and a patient with thyroid cancer treated with 10 mg/kg nivolumab.