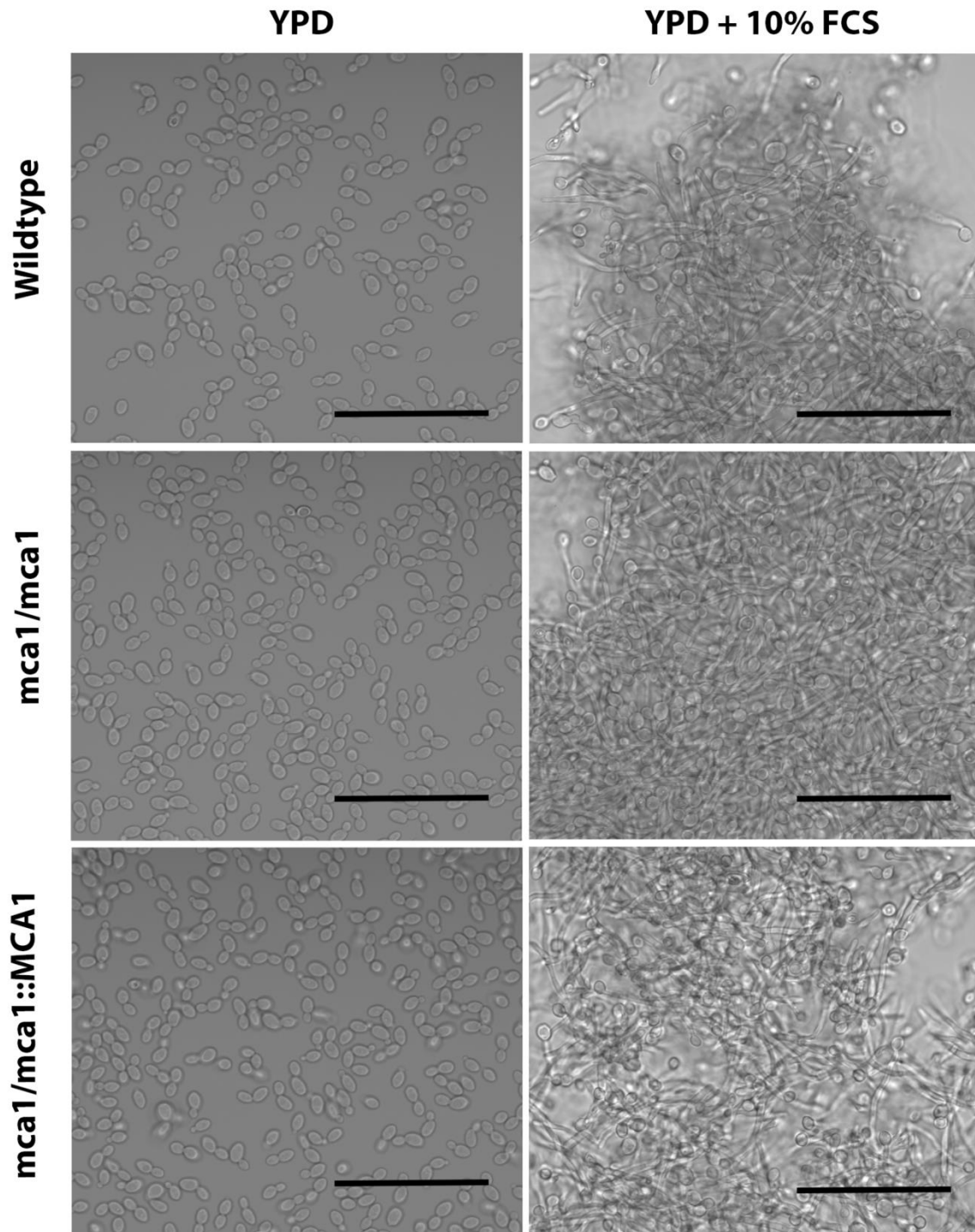


**SUPPLEMENTAL FIGURE 1: Fetal calf serum (FCS) induces filamentation in *C. albicans* wildtype cells but not in nonfilamentous mutant cells.** Micrographs (200X magnification) of wild-type and of nonfilamentous mutants in the SC5314 strain background cultured in YPD and in YPD media supplemented with 10 % FCS for three hours at 37°C. Scale bar: 50  $\mu$ m.



**SUPPLEMENTAL FIGURE 2: Fetal calf serum (FCS) induces filamentation both in *C. albicans* wildtype cells and *mca1* mutant cells.** Micrographs of wild-type and of *mca1* mutants in the BWP17 strain background cultured in YPD and in YPD media supplemented with 10 % FCS for three hours at 37°C. Scale bar: 50  $\mu$ m.