

LSD1 mediates MYCN control of epithelial-mesenchymal transition through silencing of metastatic suppressor NDRG1 gene

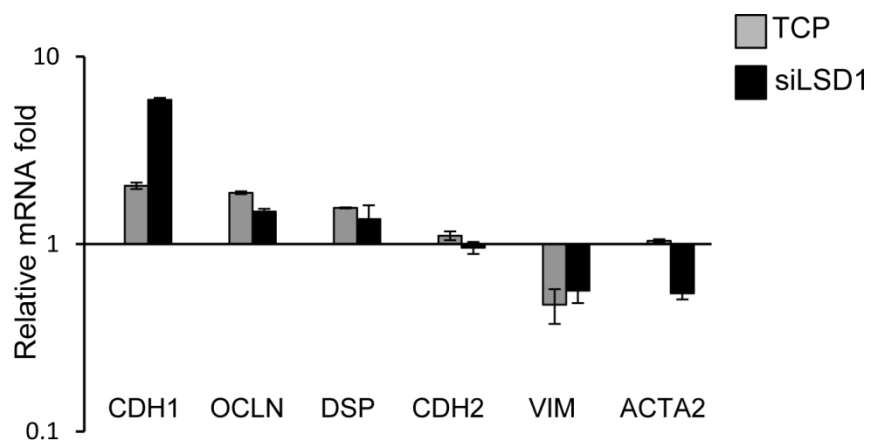
Supplementary Material

Table S1: oligos used in this work

	Gene	FW	Rev
qChIP	NDRG1 (TSS)	CGGATGGTGAAGTACGA	CCCGGACGTAAACAAACCT
qChIP	NDRG1 (-10Kb)	CCCATTGCTTTAAATCTGCTCT	TCAAAGCACTCTCTCGCTTTT
qRT-PCR	NDRG1	GGGCTGAAAAGCATTATTGG	CTCCACCATCTCAGGGTTGT
qRT-PCR	Desmoplakin	GCTAAACGCCGCCAGGAT	CCGCATGACTGTGTTGGAAT
qRT-PCR	Vimentin	CCAGCCGCAGCCTCTACG	GCGAGAAGTCCACCGAGTCC
qRT-PCR	Occludin	GCCGGTTCCTGAAGTGGT	CGAGGCTGCCTGAAGTCATC
qRT-PCR	N-cadherin	CTGTGGGAATCCGACGAATGG	GTCATTGTCAGCCGCTTTAAGG
qRT-PCR	E-cadherin	CCGCTGGCGTCTGTAGGAAGG	GGCTCTTTGACCACCGCTCTCC
qRT-PCR	Smooth muscle α -actin	CACTGCCGCATCCTCATCCT	TCATGATGCTGTTGTAGGTGGT
qRT-PCR	GUSb	GTGGGCATTGTGCTACCTC	ATTTTTGTCCCGGCGAAC

Table S2: antibodies used in this work

Protein	Used for	Manufacturer
Actinin	WB	sc-17829, Santa Cruz
NDRG1	WB	ab37897, Abcam
P-NDRG1 (Thr 346)	WB	#3217, Cell Signaling
LSD1	ChIP, co-IP, WB	ab17721, Abcam
MYCN	ChIP, co-IP, WB	sc-53993, Santa Cruz
H3Ac	ChIP	06-599, Millipore
H3K27me3	ChIP	07-449, Millipore
β -Catenin	WB, IF	610153, BD Biosciences
CyclinD1	WB	sc-8396, Santa Cruz
α -Tubulin	WB	T5168, Sigma-aldrich
RCOR1	WB	#07-455, Upstate
Max	WB	sc-197, Santa Cruz



Supplementary Fig 1. EMT markers mRNAs expression analysis after TCP treatment and LSD1-KD of Tet-21/N cells through quantitative RT-PCR. Expression profiles were normalized against control cells. Data represent the mean \pm SD of three independent experiments. Changes in mRNA expression are all statistically significant ($p < 0,05$; Student t test).

Fig. 1D

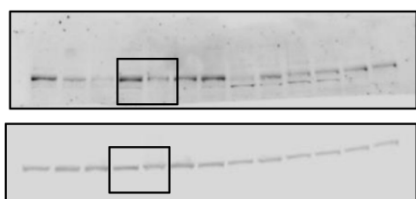


Fig. 1E

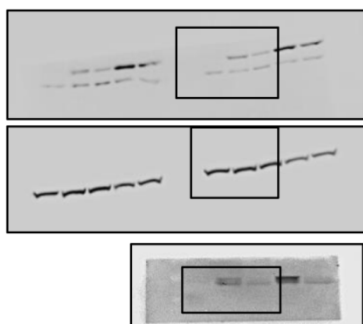


Fig. 1F

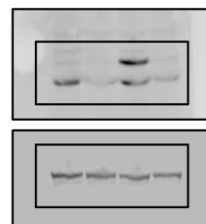


Fig. 1G

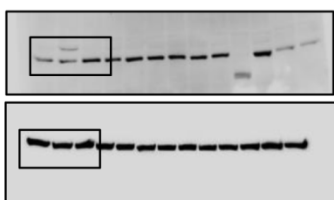


Fig. 3A

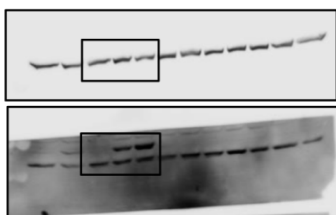


Fig. 3B

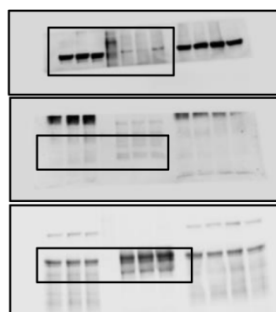


Fig. 3C



Fig. 3D

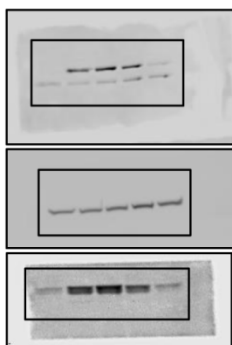


Fig. 3E

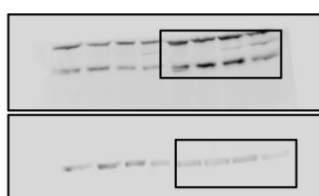


Fig. 3F

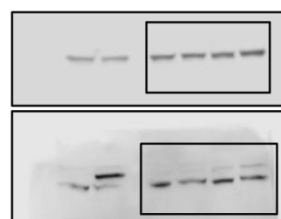


Fig. 4B

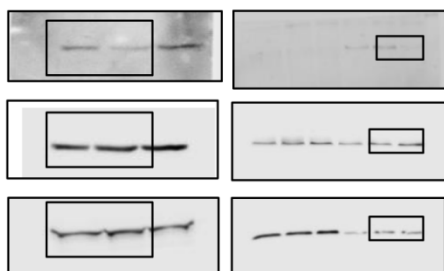


Fig. 5B

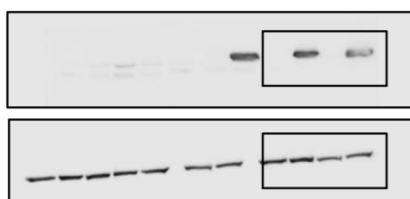


Fig. 7A

