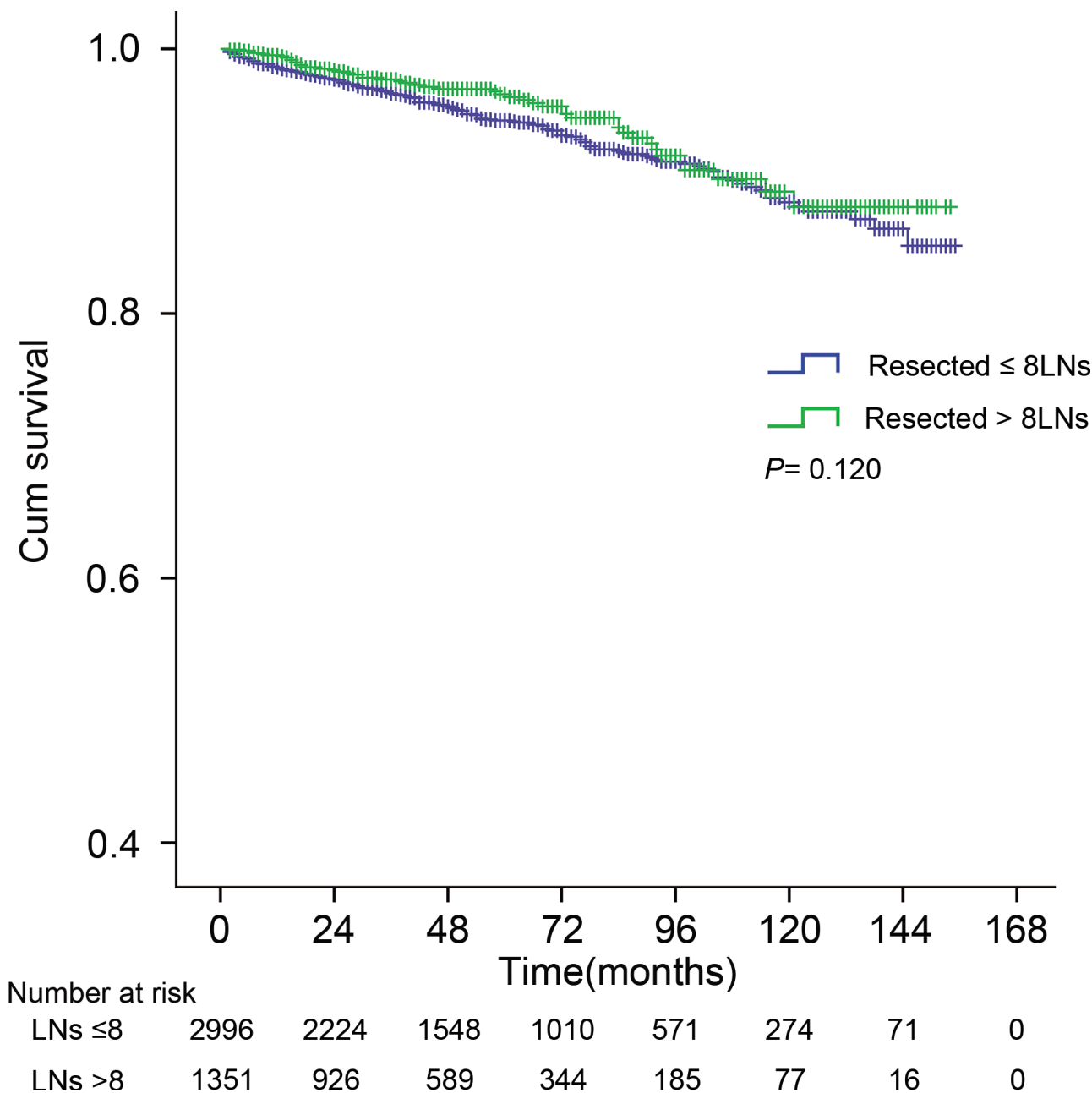


Survival outcomes and surgical intervention of small intestinal neuroendocrine tumors: a population based retrospective study

SUPPLEMENTARY FIGURE



Supplementary Figure S1: The cancer-specific survival curve according to the number of lymph node removed in localized SiNETs patients. LN_s of 8 was used as cutoff value. *P* value from log-rank test. LN_s, lymph nodes.