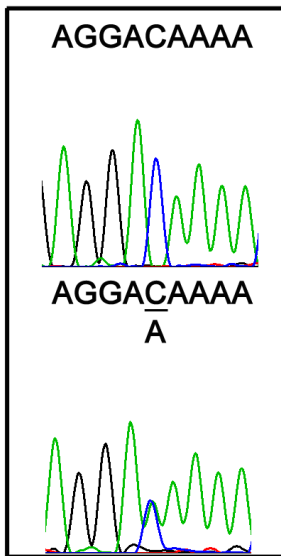
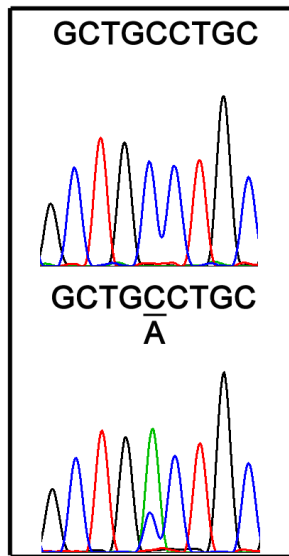


## Variants in *ANRIL* gene correlated with its expression contribute to myocardial infarction risk

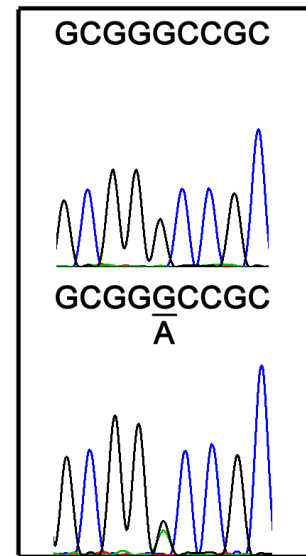
g.21993325 C > A



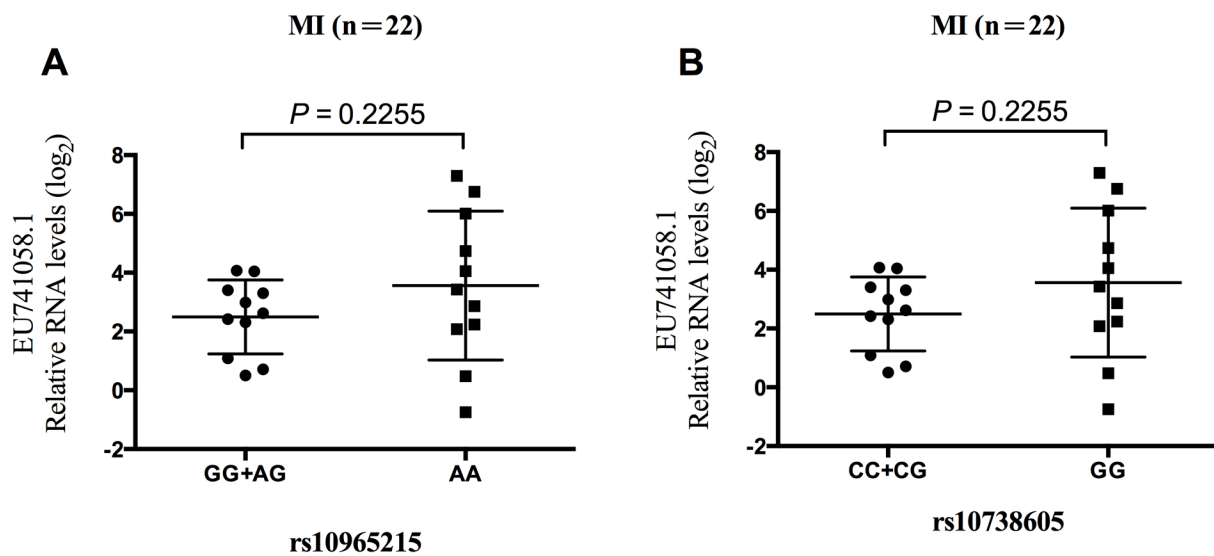
g.21993634 C > A



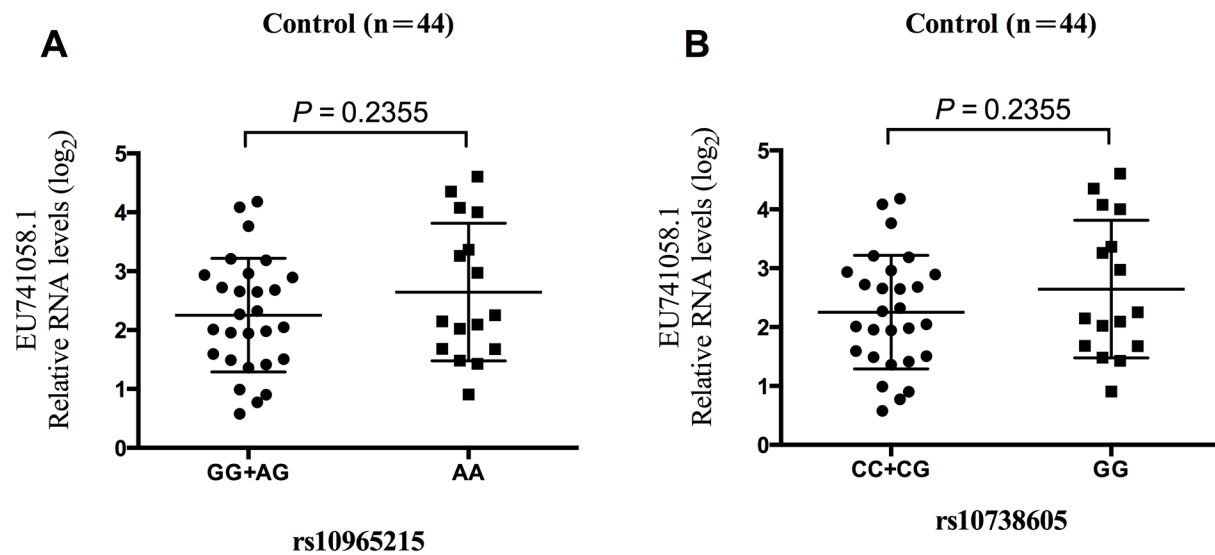
g.21994283 G > A



Supplementary Figure S1: The sequence variants identified upstream *ANRIL* start codon in 100 MI patients. The polymorphic sites are underlined.



**Supplementary Figure S2: Relationship of ANRIL transcript EU741058.1 with rs10965215 and rs10738605 in PBMCs in MI patients.** Analysis of *ANRIL* transcript *EU741058.1* expression levels in PBMCs of MI patients carrying GG/AG genotypes vs. AA genotype for rs10965215 (A). Analysis of *ANRIL* transcript *EU741058.1* expression levels in PBMCs of MI patients carrying CC/CG genotypes vs. CC genotype for rs10738605 (B).



**Supplementary Figure S3: Relationship of ANRIL transcript EU741058.1 with rs10965215 and rs10738605 in PBMCs in control subjects.** Analysis of *ANRIL* transcript *EU741058.1* expression levels in PBMCs of control subjects carrying GG/AG genotypes vs. AA genotype for rs10965215 (A). Analysis of *ANRIL* transcript *EU741058.1* expression levels in PBMCs of control subjects carrying CC/CG genotypes vs. CC genotype for rs10738605 (B).