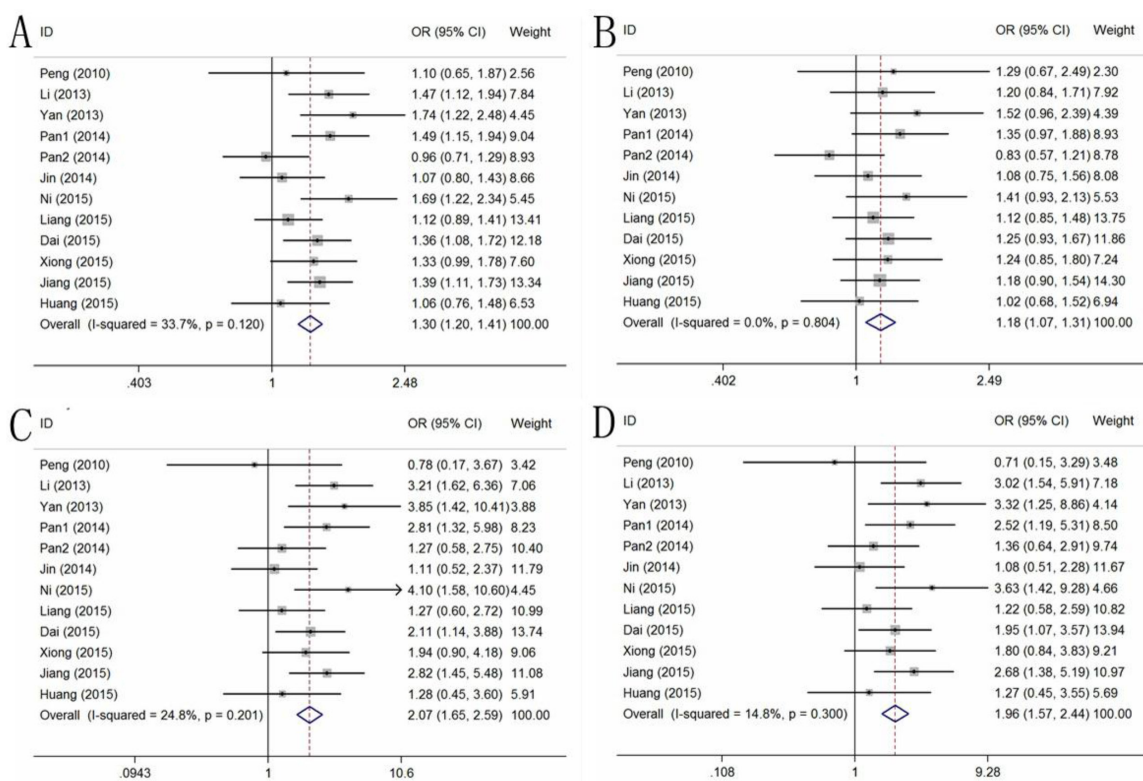
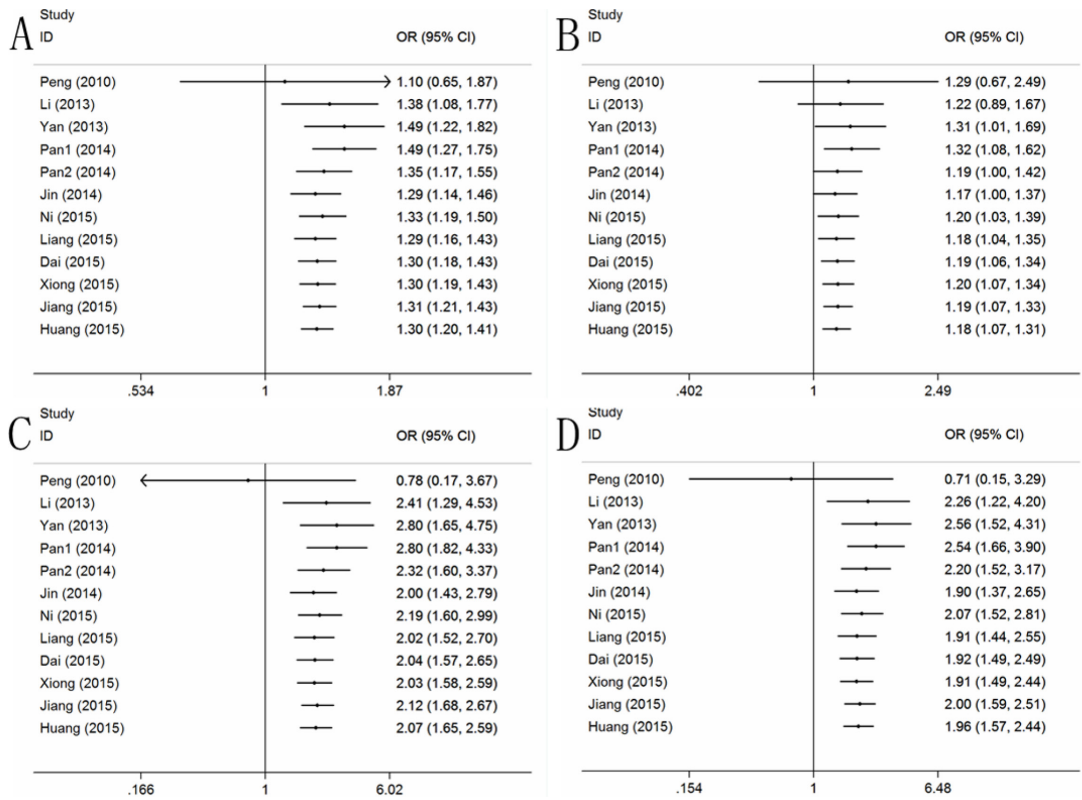


# Significant association between Let-7-KRAS rs712 G > T polymorphism and cancer risk in the Chinese population: a meta-analysis

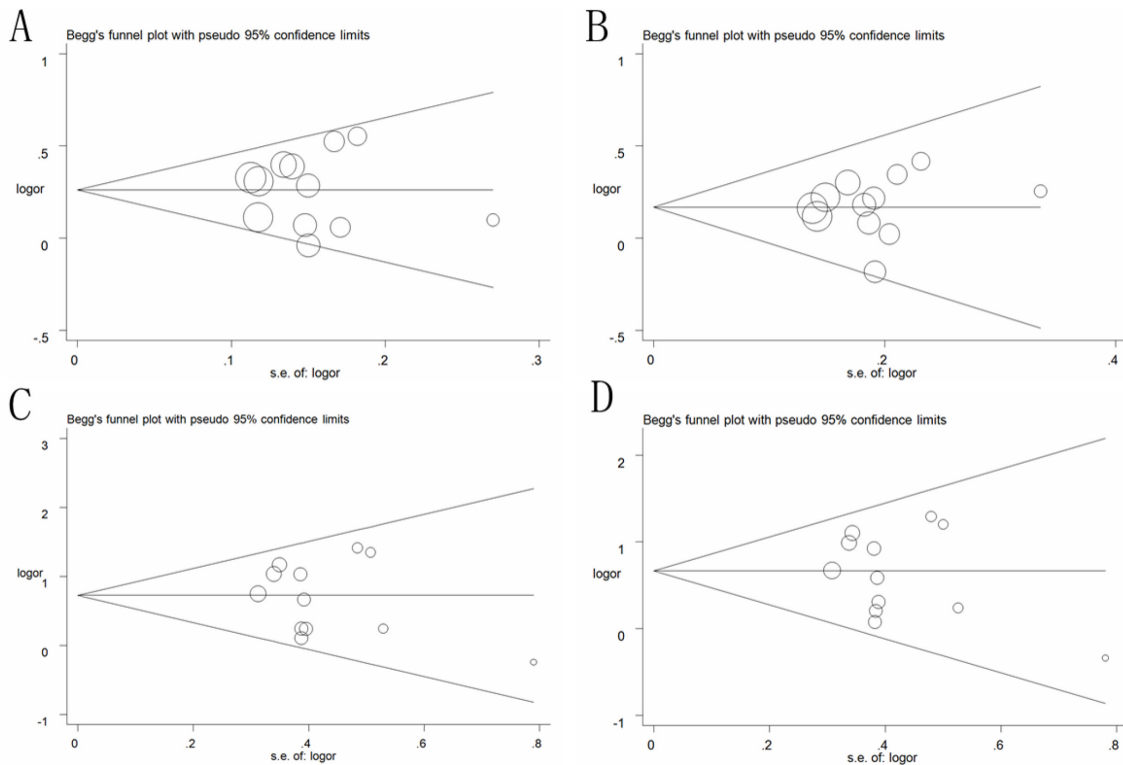
## Supplementary Materials



**Supplementary Figure 1:** OR and 95% CIs of the associations between rs712 G > T polymorphism and cancer risk ((A) for T vs. G model; (B) for GT vs. GG model; (C) for TT vs. GG model; (D) for TT vs. GG + GT model).



**Supplementary Figure 2:** Cumulative meta-analyses according to publication year in rs712 G > T polymorphism ((A) for T vs. G model; (B) for GT vs. GG model; (C) for TT vs. GG model; (D) for TT vs. GG + GT model).



**Supplementary Figure 3:** Funnel plot analysis to detect publication bias in rs712 G > T polymorphism ((A) for T vs. G model; (B) for GT vs. GG model; (C) for TT vs. GG model; (D) for TT vs. GG + GT model). Circles represent the weight of the studies.