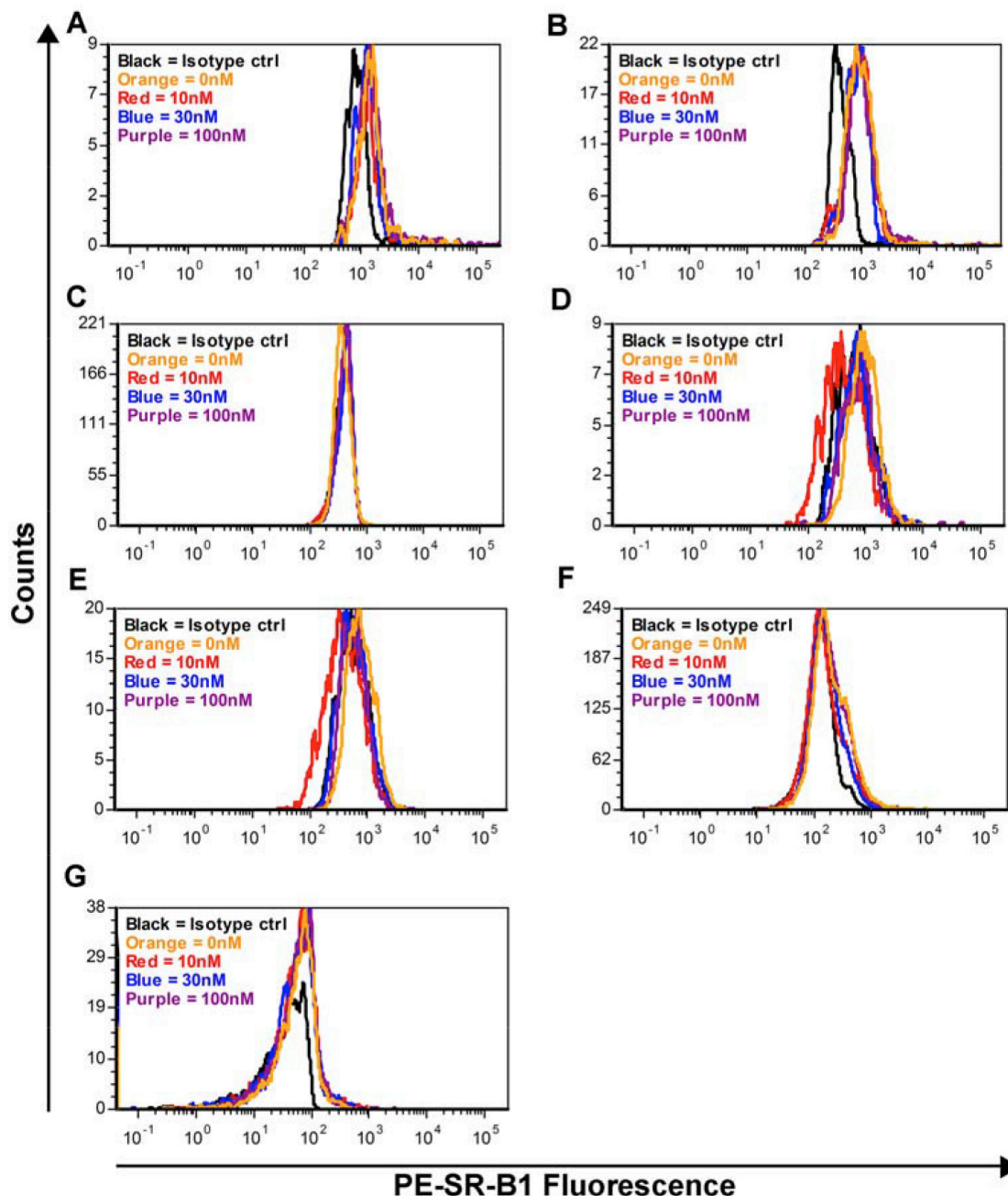


Synthetic high-density lipoproteins as targeted monotherapy for chronic lymphocytic leukemia

Supplementary Materials



Supplementary Figure S1: SR-B1 expression in PBMC types with and without HDL NP treatment. Antibody labeling of SR-B1 expression in PBMC cell types in the presence [10 nM (red), 30 nM (blue), or 100 nM (purple)] or absence [0 nM (orange)] of HDL NPs compared to isotype control (black). (A) Eosinophils, (B) immature granulocytes, (C) CD16- monocytes, (D) CD16+ monocytes, (E) cytotoxic T-cells, (F) non-cytotoxic T-cells, and (G) myeloid precursor cells.

Supplemental Table 1: Fluorescent antibodies used for identification of total PBMCs by flow cytometry

Antibody	Catalog number
APC anti-human CD2	BioLegend, 300214
APC anti-human CD294 (CRTH2)	BioLegend, 350110
Brilliant Violet 711 anti-human CD16	BioLegend, 302043
FITC anti-human CD36	BioLegend, 336204
Pacific Blue anti-human CD19	BioLegend, 302224
PE/Cy7 anti-human CD45	BioLegend, 304016
PE anti-human CD36L1 (SCARB1, SR-BI)	BioLegend, 363204