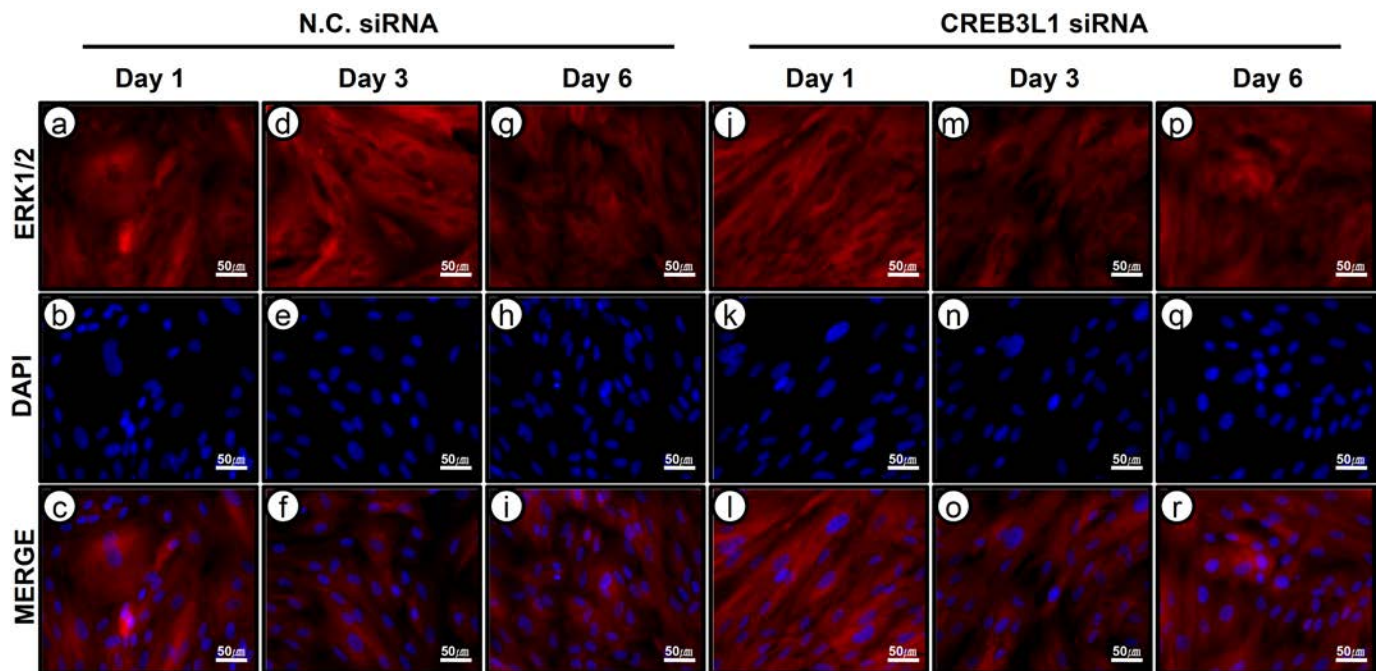


SUPPLEMENTARY MATERIAL

cAMP-Response Element-Binding 3-Like Protein 1 (CREB3L1) is Required for Decidualization and its Expression is Decreased in Women with Endometriosis

J.I. Ahn^{1,2}, J.-Y. Yoo^{3,§}, T.H. Kim³, Y.I. Kim^{1,2}, S.D. Ferguson³, A. Fazleabas^{3,4}, S.L. Young⁵, B.A. Lessey⁶, J.Y. Ahn², J.M. Lim^{1,2} and J.-W. Jeong^{3,4}

¹Laboratory of Stem Cell and Bioevaluation, Major in Biomodulation, Seoul National University, Seoul 151-921, Republic of Korea; ²Department of Agricultural Biotechnology, Seoul National University, Seoul 151-921, Republic of Korea; ³Department of Obstetrics and Gynecology & Reproductive Biology, Michigan State University, College of Human Medicine, Grand Rapid, MI 49503, USA; ⁴Department of Women's Health, Spectrum Health System, Grand Rapids, MI 49341, USA; ⁵Department of Obstetrics and Gynecology, University of North Carolina, Chapel Hill, NC 27599, USA; ⁶Department of Obstetrics and Gynecology, University Medical Group, Greenville Hospital System, Greenville, SC 29605, USA



Supplemental Fig. (1). The expression of ERK1/2 by CREB3L1 during hESCs decidualization. Expression levels of total ERK1/2 were not changed during *in vitro* decidualization of hESCs with CREB3L1 siRNA compared to transfected with non-targeting pool siRNA. Nuclei were counterstained with DAPI staining.