

# **Correlation of Cerebral Microbleed Distribution to Amyloid Burden in Patients with Primary Intracerebral Hemorrhage**

Hsin-Hsi Tsai, MD<sup>1</sup>; Li-Kai Tsai, MD, PhD<sup>1</sup>; Ya-Fang Chen, MD<sup>2</sup>; Sung-Chun Tang, MD, PhD<sup>1</sup>; Bo-Ching Lee, MD<sup>2</sup>; Ruoh-Fang Yen, MD, PhD<sup>3</sup>; Jiann-Shing Jeng, MD, PhD<sup>1</sup>

<sup>1</sup> Departments of Neurology, National Taiwan University Hospital, Taipei, Taiwan

<sup>2</sup> Department of Medical Imaging, National Taiwan University Hospital, Taipei, Taiwan

<sup>3</sup> Department of Nuclear Medicine, National Taiwan University Hospital, Taipei, Taiwan

## **Supplementary Figure Legends**

### **Supplementary Figure 1 Correlation of lobar cerebral microbleed count and amyloid burden**

The correlation of lobar cerebral microbleed (CMB) count to the global PiB standardized uptake value ratio (SUVR) (A), frontal PiB SUVR (B) and occipital PiB SUVR (C).

### **Supplementary Figure 2 Correlation of deep cerebral microbleed count and amyloid burden**

The correlation of deep cerebral microbleed (CMB) count to the global PiB standardized uptake value ratio (SUVR) (A), frontal PiB SUVR (B) and occipital PiB SUVR (C).

**Supplementary Table 1: Comparison of other image markers in patients with different CMB pattern**

	<b>Lobar (n=8)</b>	<b>Mixed (n=28)</b>	<b>Deep (n=11)</b>	<b><i>p</i> value</b>
White matter score	1.88 ± 0.84	2.18 ± 0.72	1.82 ± 0.75	0.320
Cortical superficial siderosis	3 (37.5%)	3 (10.7%)	0 (0%)	0.064
Enlarged perivascular space (number > 20)				
Centrum Semiovale	2 (25%)	18 (64.3%)	4 (36.4%)	0.102
Basal ganglia	2 (25%)	6 (21.4%)	5 (45.5%)	0.385

Values are mean (±standard deviation) or number (percentage).

**Supplementary Table 2: Results of Logistic regression for Positive PiB Scan (SUVR>1.15)**

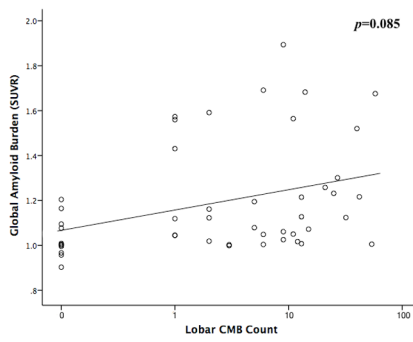
	<b>Odds Ratio</b>	<b>95% CI</b>	<b>p value</b>
Age $\geq$ 55	5.258	0.416-66.409	0.200
Hypertension	1.135	0.149-8.671	0.903
Days after ICH	1.000	0.999-1.001	0.844
Lobar ICH	0.052	0.002-1.001	0.068
Strictly lobar CMB	0.000	0.000-1.699	0.051
CMB count			
Lobar	0.968	0.880-1.065	0.507
Deep	1.056	0.960-1.161	0.261
<b>CMB ratio*</b>	<b>6.018</b>	<b>1.043-34.719</b>	<b>0.045</b>

CMB: cerebral microbleed; CI: Confidence interval; ICH: intracerebral hemorrhage;

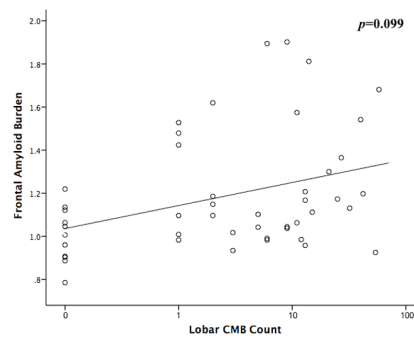
PiB:  $^{11}\text{C}$ -Pittsburgh Compound B; SUVR: standardized uptake value ratio.

\*CMB ratio is defined as the lobar CMB count divided by the deep CMB count.

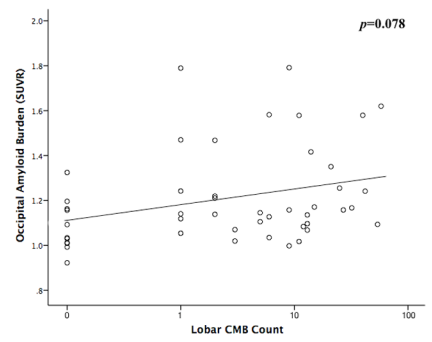
**Supplementary Figure 1**



(A)

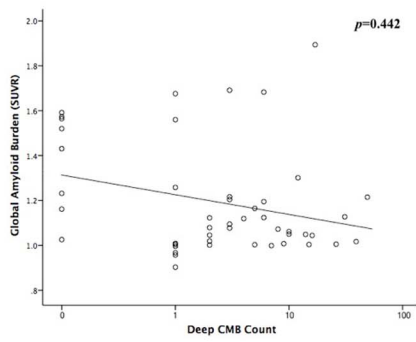


(B)

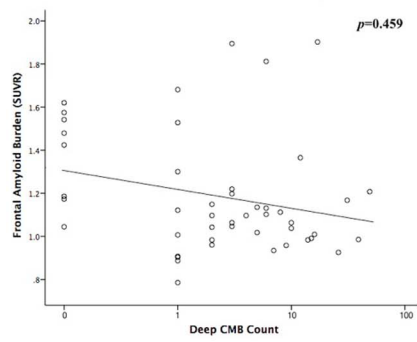


(C)

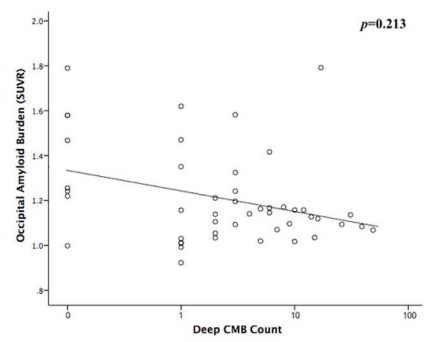
**Supplementary Figure 2**



(A)



(B)



(C)