

Modeling anti-IL-6 therapy using breast cancer patient-derived xenografts

Supplementary Material

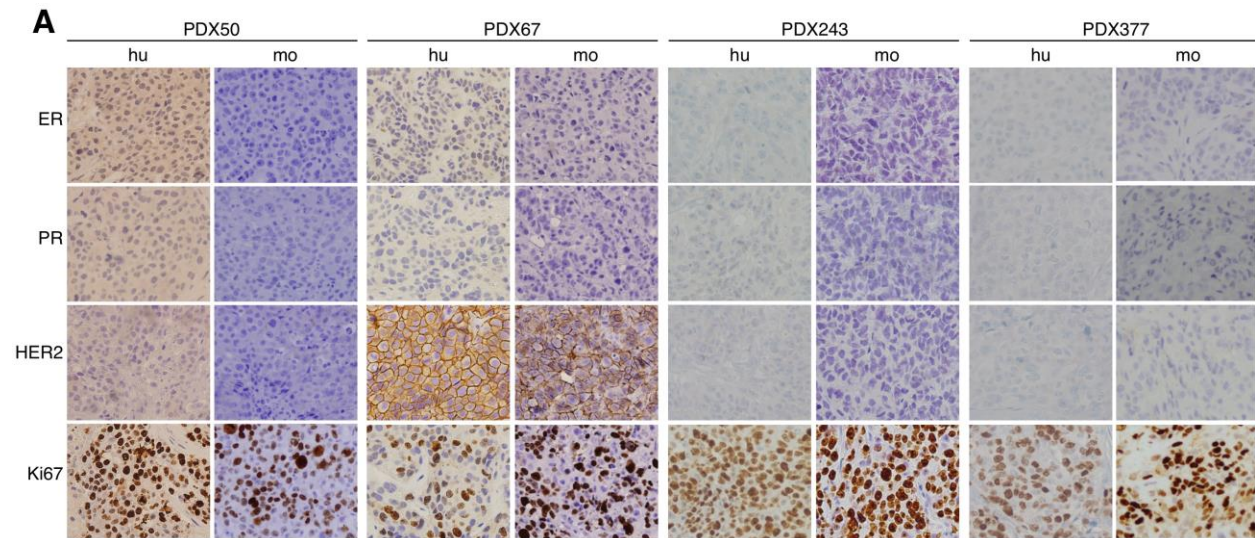


Fig. S1. The expression of the estrogen receptor (ER), progesterone receptor (PR), human epidermal growth factor receptor 2 (HER2) and Ki-67 were evaluated in samples from the indicated patient (hu, human) and the corresponding PDX (mo, mouse).