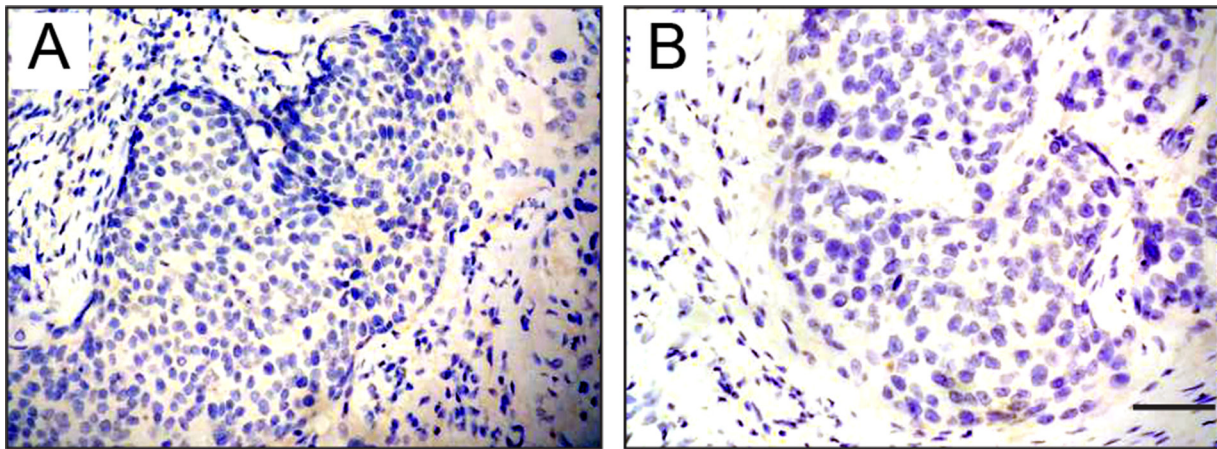


Jumonji domain-containing protein 1A promotes cell growth and progression via transactivation of c-Myc expression and predicts a poor prognosis in cervical cancer

SUPPLEMENTARY FIGURE



Supplementary Figure S1: Immunohistochemical staining of negative control for JMJD1A A. and c-Myc B. in cervical cancer tissues. Scale bar, 50 μ m.