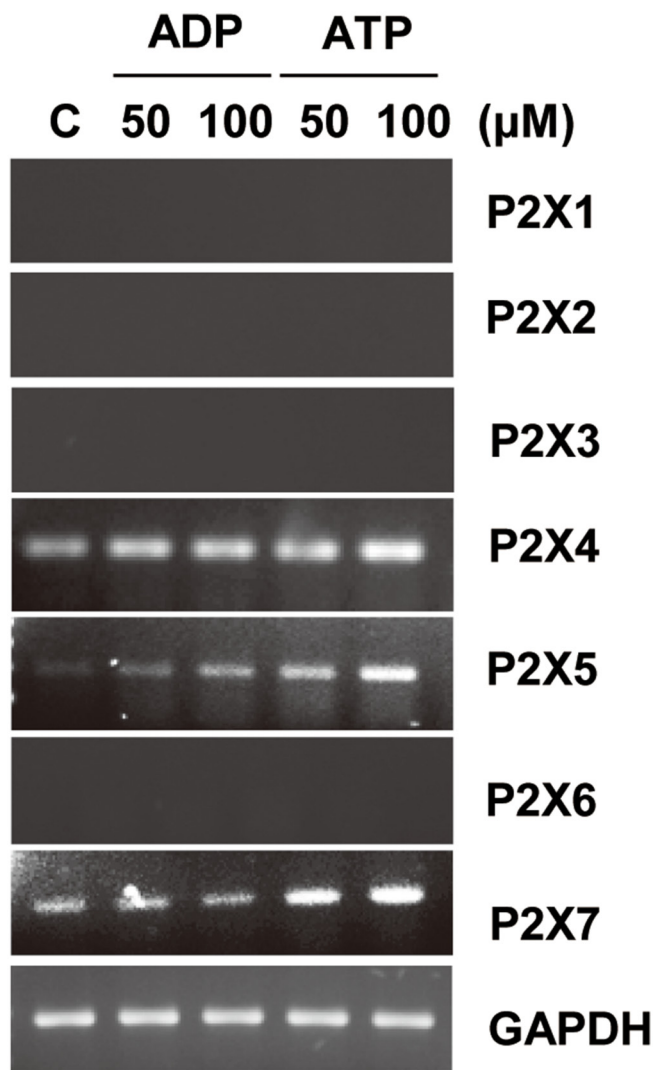


## Pin1 induces the ADP-induced migration of human dental pulp cells through P2Y1 stabilization

### SUPPLEMENTARY FIGURE



**Supplementary Figure 1: Expression of P2Xs gene family in hDPCs.** Cells were treated with ADP or ATP for 24 h. RT-PCR was performed using primers as described in Table1. GAPDH was used as an internal control.